

EOFY

TAX TIME SAVINGS

\$217.00
KNIPEX

Precision Circlip Plier Set 00 20 01 V09

- Contains two internal and two external circlip pliers in popular sizes
- Inserted tips for heavy duty use
- Foam tray for easy storage
- Made in Germany



NEW PRODUCT

\$49.95
FAMOUS TOLEDO
EXCELLENCE BY DESIGN

Sliding Bevel 322020 250mm (10")

- Draw or scribe precise angles on most flat surfaces
- Suitable for metal fabrication, carpentry, construction, industrial and engineering applications
- Adjustable gauge suitable for setting desired angles, transferring angles and duplicate existing angles
- Features fixing screw on the bottom of handle to easily lock the blade
- Made in Japan



NEW PRODUCT

\$482.95
@Bikeservice

Magneto Flywheel Set

BSB00391 1/2" Sq. Dr. 15 Piece

- For fixed-point type magneto flywheels
- Chrome alloy steel ball tip on shaft to reduce friction stress
- Sizes - M19 x 1.0 - M42 x 1.5



NEW PRODUCT

\$164.95
TRIDON

Sump Plug Master Kit TPP004

- Contains 21 of Tridon's top selling sump plugs in both carbon steel and high quality polymer.
- This handy modular grab kit is perfect for any workshop or mobile mechanic, providing a sump and drain plug solution for over 10 million vehicles on the road in Australia.
- Fully applied listings can be found on Tridon PartFinder at tridon.com.au/partfinder and all major electronic catalogues or by scanning the QR code on the pack.


\$99.95
Sykes-Pickavant.

Ball Joint Separator

080600 Fork Type Long Reach 420mm

- Effective and simple ball joint separation and removal
- Enables hammer strike operation
- Suitable for passenger and light commercial applications
- Throat Width: 18mm
- Throat Depth: 88mm

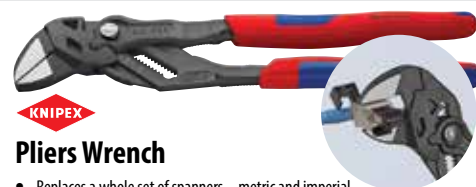


NEW PRODUCT

\$69.95
FAMOUS TOLEDO
EXCELLENCE BY DESIGN

Socket Tray 302210 Heavy Duty

- For organising sockets and accessories
- Suitable for standard, deep and specialty sockets
- Holds 80 pieces in 1/4" (20), 3/8" (30), 1/2" (30) square drive
- Spring loaded stainless steel ball bearing ensures sockets hold firmly in place
- Convenient carry handle for portability to complete tasks off site
- Dimensions: 457 x 152mm



Pliers Wrench

- Replaces a whole set of spanners – metric and imperial
- Work directly on chrome: zero backlash jaw pressure prevents damage to edges of sensitive components
- Lever transmission greater than 10 : 1 for strong gripping power
- Black atramentized version - suitable for automotive and general industry use
- Made in Germany

Part No.	Handles	Capacity mm	Adjustment Positions	PRICE
86 02 180	Comfort	52	19	\$132.00
86 02 250	Comfort	52	19	\$143.50

NEW PRODUCT

FAMOUS TOLEDO
EXCELLENCE BY DESIGN

Socket Rails Aluminium 432mm

- Professional aluminium socket rail holds standard, deep and specialty sockets
- High quality aluminium with anodised red finish

Part No.	Size	Capacity	PRICE
302211	1/4" Sq. Dr.	16 sockets	\$19.95 EACH
302212	3/8" Sq. Dr.	16 sockets	
302213	1/2" Sq. Dr.	16 sockets	



\$33.95



Fibreglass Folding Rule

321902 Double Sided Metric 2000mm

- Divided into 220mm sections connected via a reliable and sturdy fix joint mechanism which enables extensions of 90° or 180° to firmly lock into place
- Double sided metric graduations
- Manufactured from durable fibreglass
- Made in Switzerland**

\$26.95

Tape Measure 321910

10m Metric Double Sided Auto Lock

- Strong and robust design with ABS and TPE shock-proof casing
- Double sided metric graduations
- Automatic blade lock function provides easy set-up allowing one person operation
- Ergonomic design with belt clip and hanging tether



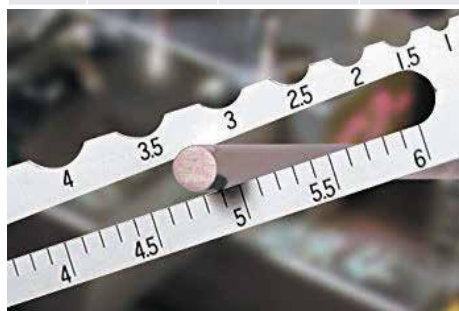
\$33.95 EACH



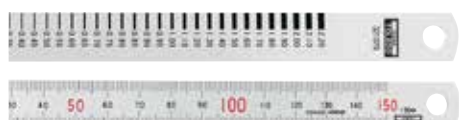
Radius Scales

- Unique pocket size precision tool designed to measure radius and diameter
- Centre cut out to measure diameter, side cuts to measure radius
- Manufactured from hardened Japanese stainless steel
- Made in Japan**

Part No.	Radius Range	Diameter Range	Rule Range
321068	8-15mm	0.5-6mm	0-150mm
321069	0.5-7mm	0.5-6mm	0-150mm



\$15.95



Rule & Crack Measure

321079 150mm

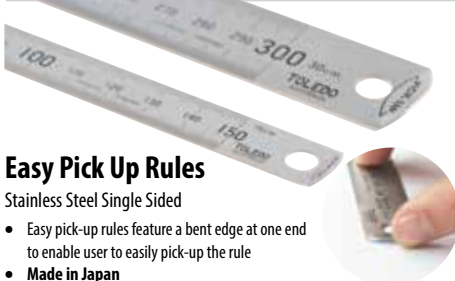
- Gauge: 0.10 - 2.20mm
- Check the width of cracks in walls and foundations
- Hardened Japanese stainless steel
- Made in Japan**



Stainless Steel Rules

- Stainless steel rules in various styles
- Made in Japan**

Part No.	Length	Style	PRICE
150SP	150mm	Double sided metric	\$8.95
150B6	150mm	Double sided metric and Imperial	\$8.95
300M	150mm	Single sided metric	\$15.95
30012	300mm	Double sided metric and Imperial	\$16.95



Easy Pick Up Rules

Stainless Steel Single Sided

- Easy pick-up rules feature a bent edge at one end to enable user to easily pick-up the rule
- Made in Japan**

Part No.	Length	Width	PRICE
301956	150mm	15mm	\$7.95
301957	300mm	25mm	\$15.95

WHILE STOCKS LAST!

\$120.95

Measuring Set

NTA070 Limited Edition 70th Anniversary

- Gold plated measuring set containing three of Toledo's most popular measuring tools
- Made in Japan**

Contents

Metric & Imperial Rule - 300mm, Single Sided

Metric Easy Pick up - 150mm

Single Sided Metric Taper Gauge - 1-15mm



Engineering Squares

Non-Graduated High Grade Professional

- High grade Japanese Carbon Steel (S50C)
- For auto, industrial, metalwork, woodworking and engineering applications
- Made in Japan**

\$67.95 FROM

Part No.	Length	PRICE
321115	50mm	\$67.95
321116	75mm	\$69.95
321117	100mm	\$71.95
321118	150mm	\$75.95
321119	200mm	\$98.95
321120	250mm	\$107.95
321121	300mm	\$129.95



Taper Gauges Stainless Steel

- Used to measure internal diameters
- Photographically etched markings ensure the greatest precision and accuracy
- Satin chrome finish for strength and durability
- Made in Japan**

Part No.	Size Range	Accuracy	PRICE
700C	30-45mm	-/+ 0.05mm	\$89.95
700D	45-60mm	-/+ 0.05mm	\$107.95

\$26.95

Pipe Level Set

322011 5 Piece

- Sizes: 1/2", 3/4", 1", 1 1/4", 1 1/2" and 2"



\$8.95



Level Line 322455 20m

- Includes two line levels with pocket clips and 20 metre line
- Lightweight levels eliminates sag
- V-groove for pipe work



\$147.95



Face Spanner Wrench Set

315158 Adjustable 9 Piece

- Suitable for loosening and tightening nuts with holes on surface
- Knurled central divider type nut allows with adjustment and locks it into place
- Changeable pins suit various size holes
- Capacity - 20-100mm
- Pin size: 2.5, 3, 4, 5, 6, 7, 8 and 9mm



\$30.95



Crimper, Cutter & Stripper WS210 210mm

- Reliable crimper, cutter and stripper for versatile use
- Suitable for insulated and non insulated terminals

**\$53.95
FROM**



D-Sub Deutsch 4 Way Indent Crimpers

- Crimps round barrel contacts, pins or sockets
- Built in locator

Part No.	Size		PRICE
	AWG	mm ²	
321025	20-12	0.5 - 4.0	\$53.95
321093	16 - 18	1.5 - 1.0	\$61.95
321094	20 - 22	0.5 - 0.3	\$58.95

\$16.95

Electro-Mechanical Cutters PC6 150mm

- Hardened precision cutting edges for cutting and twisting soft wire
- Suitable for use in fine electrical and electronics applications
- Ideal for cutting plastic e.g. cable ties
- Jaw length: 20mm
- Jaw opening: 0-20mm
- Cut type: Flush



**\$28.95
FROM**

Combination Pliers

- For firm gripping and cutting
- Serrated gripping zones for flat and round material
- Suitable for most soft and hard wire up to 3mm in diameter



**\$30.95
FROM**

Diagonal Pliers

- Heavy duty cutters for powerful, efficient and precise cutting
- Suitable for most soft and hard wire up to 3mm in diameter



Part No.	Overall Length	Jaw Opening	Jaw Width	PRICE
301994	180mm	0-22mm	3-11mm	\$30.95
301995	200mm	0-20mm	3-11mm	\$36.95

**\$28.95
FROM**

Long Nose Pliers

- For cutting, gripping and manipulating all types of components and wires
- Excellent control and reach in confined spaces
- Suitable for most soft and hard wire up to 3mm in diameter

Part No.	Tip	Length	Jaw Opening	Jaw Width	PRICE
301996	Straight	210mm	0-85mm	3-10mm	\$28.95
301997	45°	210mm	0-75mm	3-10mm	\$30.95

\$99.95



Universal Spanner Extender 321045 340mm

- Minimises slippage and provides additional leverage when removing stubborn nuts and bolts
- Features 1/2" square drive adaptor for increased leverage
- Made in Germany

\$25.95



Ball Pein Hammer

321054 Hickory Handle 16oz

- Carbon fibre core increases bending when striking by more than 25% over a conventional fibreglass type
- Made from durable alloy steel head

\$28.95



Ball Pein Hammer

321051 Carbon Fibre Handle 16oz

- Carbon fibre core increases bending when striking by more than 25% over a conventional fibreglass type
- Made from durable alloy steel head

\$107.95



Sledge Hammer 321057 10lb 910mm

- The durable hardened carbon steel head is ideal for repeated high impact striking applications

\$14.95



Rubber Mallet 321090 24oz

- Black natural rubber head provides enough force without damaging the striking surface

\$88.95

Right Angle Drill Attachment 321921

- Suitable for use with cordless or corded drills
- 90° head allows to access confined space
- Provides up to 49Nm of torque
- Includes PH1 and PH2 bits
- Made in Japan



321945



321948



Ergo-Line Screwdrivers

- Ergonomic dual piece handle
- Inner plastic core permanently locks with blade
- Comfortable rubber handle is moulded to fit the hand
- Non-roll handles to prevent tool loss and minimise downtime
- Made in Japan

Part No.	Type	Blade Length	Overall Length	PRICE
321945	Slotted 5.5mm	75mm	175mm	\$13.95
321948	Slotted 6mm	200mm	330mm	\$17.95

**\$20.95
EACH**



321952



321955

Strike-Line Screwdrivers

- High-grip bulb handles
- Unique design enables greater grip and torque
- Dual piece handles for strength and comfort
- Non-roll handles to prevent tool loss and minimise downtime
- Shatterproof impact steel cap with strike-thru blade
- Made in Japan

Part No.	Type	Blade Length	Overall Length
321952	Slotted 6mm	150mm	240mm
321955	Phillips #2	150mm	240mm

**\$14.95
EACH**

Stub-Line Screwdrivers

- For hard to reach applications
- Wide mini handles for extra comfort and grip
- Ergonomic dual piece handle
- Designed to provide additional finger grip and prevent rolling
- Maximum strength, grip and torque
- Made in Japan

Part No.	Type	Blade Length	Overall Length
321971	Phillips #2	30mm	76mm
321972	Slotted 6mm	30mm	76mm

\$17.95

Pocket Knife

321301 Single Blade Lock Back

- Compact pocket knife with lock back style mechanism
- Stainless steel drop point blade suitable for various applications



Technician's Knives

- Suitable for heavy duty cutting including wire insulation, rope twine, belting, hoses, leather, linoleum, carpet and tape
- Also suitable for wire stripping, gardening and carpentry work

Part No.	Blade Length	Description	PRICE
TTK1	70mm	440 Stainless Steel	\$23.95
AIK3S	70mm	Carbon Stainless Steel	\$24.95

WHILE STOCKS LAST!

\$2.95

Window Scraper

Razor Style Fixed WSCR 150mm

- Designed for scraping windows and glass
- Blade width: 55mm



\$51.95

Oil Filter Wrench Tool 305915 Ford 1/2" Sq. Drive

- Essential tool for removing oil filter housing
- Articulated design allows you to clear any obstruction in engine bay during removal
- Applicable to Ford Duratorq 2.0 TDI, 2.2 TDCI, Citroën & Peugeot 2.2 HDI, 2.0 HDI and Jaguar XF 2.2D
- Type: 12 Point
- Equivalent OEM: 303-1579



\$70.95

Plastic Oil Plug

Driver Set 305997 5 Piece

- For removing and installing plastic type sump plugs
- Suitable for VW, Audi, BMW, Peugeot, Citroën and Ford
- Square drive T-handle: 3/8"
- Includes four adaptors



\$44.95

Oil Filter Wrench

305405 64.5mm
14 Flutes (Toyota)

- Perfect fit for plastic and aluminium cartridge filter housings including metal spin-on type oil filters
- Designed for safe removal and to minimise slippage on stubborn oil filters
- Suitable for most Toyota and Lexus V6, V8 and inline 4 & 6 cylinder engines
- Compact design with two drive options
- Heavy duty S45C steel for strength and durability
- **Note: Do not use with impact wrench or power tools**



Scissors

Part No.	Length	PRICE
AKS130BU	130mm	\$3.95
TSE120CD	125mm	\$2.95
TSH160CD	160mm	\$2.95

\$61.95

Auto File Set TFR250B 4 Piece

- Specially created file set to cater for automotive use
- Includes 2nd cut round, half round, square and bastard cut flat



\$165.95

Bearing Separator

Puller Kit 221000

12 Piece Mechanical 5 Tonne

- Features two sizes of bearing separators to cover a wide range of applications where access is only available behind the bearing
- Tapered separator edge design enables insertion behind close fitting bearings, gears etc.
- Bearing separators offer better all round support and stability
- Includes 30 - 50mm and 50 - 75mm capacity bearing separators



Triple Leg Mechanical Pullers

- Easy removal of bearings, pulleys, gears and sprockets
- Drop forged chrome vanadium alloy steel to increase rigidity and reduce long-term wear
- All Toledo triple leg mechanical pullers are double ended
- Suitable for internal and external applications



Part No.	Spread	Reach	Capacity	PRICE
223030	75mm	60mm	1 Tonne	\$36.95
223120	300mm	215mm	13 Tonne	\$370.95

\$269.95

Split Collet Extractor 246300 9 Piece

- Extract components quickly and efficiently when conventional pullers cannot be used
- Removes bearings, oil seals etc. without damaging housing
- Collet size range: Ø 8-23mm



\$80.95

Twin & Triple Leg Mechanical Puller

Set 224040 100mm

- Interchangeable twin and triple heads allow for an infinite number of internal and external pulling applications
- Drop forged chrome vanadium alloy steel to increase rigidity
- Designed for easy removal of bearings, pulleys, gears and sprockets
- Supplied in custom moulded high grade EVA foam tray for safe and secure storage



Spread	Reach	Capacity
100mm	70mm	2 Tonne

\$130.95

Automatic Self Grip Pullers 225040

- Quick change head design allows for 2 or 3 jaw external or internal pulling work
- Ensures maximum grip for all pulling applications
- Easy removal of bearings, pulleys, gears and sprockets



Size	Spread	Reach	Capacity
4"	76-102mm	90mm	10 Tonne

\$365.95

Hydraulic Bearing Puller Set

265000 Master Kit

- Universal master kit for various applications
- Includes 75-105mm bearing separator
- Supplied in a blow mould storage case
- Capacity: 10 tonne
- Spread: 180mm
- Reach: 425mm



\$67.95

Power Steering Pump Pulley Kit

245380

- For quick and damage free removal and installation of power steering pump pulleys
- Designed specifically to suit 28 - 35mm pulley hub diameters
- Applications include Ford Falcon FG, Ford C111, Saginaw, Thompson, C2 power steering pumps



ME SAVINGS

**FAMOUS
TOLEDO**
EXCELLENCE BY DESIGN

\$597.95

Bearing Separator Kit

265015 Mechanical & Hydraulic 3 Jaw

- Kit contains all the components for mechanical and hydraulic assembly
- Removes stubborn bearings, gears, sprockets and pulleys effortlessly without damaging shaft and surrounding components
- Includes heavy duty 10 tonne hydraulic ram and 210mm forcing screw with centre nut, triple beam, various extension rods, puller leg set and three jaw bearing separator

Capacity: 35-105mm
Spread: 170mm
Reach: 900mm

\$18.95

Oil Seal Remover 301042 310mm

- Removes seals on various applications including auto, industrial and marine etc
- Includes replacement hook tip and screws

\$83.95

Hose Removal Pliers 301708

Screw Lock Type 157mm

- Designed to easily remove hose from tubes or lines without damage
- Suitable for 3/16", 1/4" and 3/8" tubes
- Pointed jaws allowed access in confined space
- Locking design secures grip
- Handle provides a non-slip grip

\$175.95

Auto Flexing Line Socket Set 304599 6 Piece 3/8" Sq. Dr.

- Specialty tool for loosening or tightening fuel line nuts
- Universal sockets suitable for hydraulic, fuel, air lines etc.
- Double joint design allows flexible angle of 45°
- Multi hex design socket combined with flexing feature allows to be used in hard to reach areas
- Size: 11, 13, 14, 15, 17mm

\$89.95

Hose Clamp Pliers 301172 Flexible Cable 210mm

- Designed for installation and removal of constant tension style hose clamps
- Flexible cable allows extra reach for difficult applications
- Locking mechanism holds clamp in position

\$117.95

Screw Extractor Set 301535

Heavy Duty 9 Piece

- For removing broken, stripped and corroded fasteners
- Utilises left hand spiral design for gripping and removal
- Includes metric and imperial size range with recommended drilling size
- Size range: 1/8" - 1 1/4" (3 - 36mm)

\$109.95

Exhaust Gas Temperature Sensor Socket Set 301561 3/8" Sq. Dr

Size: 13, 14, 17mm 6 Piece

- Specific socket set for removing exhaust gas temperature sensors (EGT)
- Includes single hex sockets in offset shallow and straight deep configuration
- Features cut away design allowing the wire to pass through without damaging plug
- Suitable for passenger, heavy goods vehicles, tractors and marine diesel engines

\$87.95

Crowfoot Wrench Set 302999

1/4" Metric Straight 9 Piece

- For use in confined work areas where standard wrenches are unable to access
- Straight jaws suitable for low torque applications
- Includes breaker bar and extension

\$195.95

Deburr Tool Set 301562 3 Piece

Internal & External

- Ideal for chamfering sharp edges on pipes, tubes, rods and repair threads on fasteners, bolts, studs and threaded rods etc
- Range: Ø3 to 35mm

\$58.95

Socket Reducer Set 321109 Impact Heavy Duty

321109 Impact Heavy Duty

- Designed to reduce or increase socket drive
- Enables greater flexibility when working in limited spaces
- Size: 1/4", 1/2", 3/8", 3/4"

\$41.95

Harmonic Balancer Master Puller Set 254230

- Comprehensive multi-purpose puller set designed for the removal of harmonic balancers, timing gears and pulleys where access to 2 or 3 tapped holes is available

\$45.95

Bearing Separator 245050 30-50mm

- Supplied in custom moulded high grade EVA foam tray
- Easy, neat and secure storage solution for workshop tool drawers
- Thread: 3/8"

\$142.95

Bearing & Oil Seal Installation Kit 301350

- Professional comprehensive kit designed for installing bearing, race and oil seals
- Manufactured from aluminium for damage free installation
- Size range: 40-80mm

\$171.95

Master Bearing Race & Seal Drivers 321084 9.5-50mm

- Universal tool for replacing race seat, bearings and seals
- Simply twist head to adjust jaw size
- Aluminium body with hardened steel striking cap

\$75.95



Hose Clamp Pliers

321909 Multi-Directional 35°

- Jaws with serrated and cross slots suitable for various spring type hose clamps
- Multi-directional pliers give wide range of angles in confined spaces
- Serrated jaws give a secure grip onto spring loaded hose clamps
- Overall length: 255mm



**\$23.95
FROM**

Circclip Pliers

- Professional trade quality range of circclip pliers manufactured to the highest standards to ensure peak performance and maximise durability and service life
- Range includes a combination of angled and straight tip options for internal and external circclip applications
- Suitable for internal or external circclip applications
- Manufactured from heat-treated, drop forged steel

Part No.	Type	Jaw Opening	Tip Diameter	Length	PRICE
301125	Internal Straight	4-20mm	1.2mm	130mm	\$23.95
301126	Internal 90°	4-20mm	1.0mm	130mm	\$23.95
301127	External Straight	4-20mm	1.2mm	130mm	\$23.95
301128	External 90°	4-20mm	1.0mm	130mm	\$23.95
301133	Internal Straight	6-40mm	1.8mm	230mm	\$31.95
301134	Internal 90°	6-40mm	2.0mm	230mm	\$31.95
301135	External Straight	6-40mm	1.8mm	230mm	\$31.95
301136	External 90°	6-40mm	2.0mm	230mm	\$31.95



Security Spring Hooks

- Safety measure used to secure tools when working at heights
- Prevents injury and downtime as a result of falling tools

Part No.	Description	Load Capacity	Extended Length (max)	PRICE
301907	Heavy Duty: Bungee style elasticized nylon stretch cord	5kg	430 - 1400mm	\$23.95
301908		10kg	600 - 1800mm	\$30.95



Ratchet Podgers

- Designed and manufactured specifically for heavy duty and industrial use where extra leverage, size and strength is required
- Precisely machined to ensure production accuracy which maximises strength and safety during use
- Featuring a tapered end design for easy bolt hole alignment and a dual size socket opposing end
- *For scaffolders and steel work applications

Part No.	Size	PRICE
301228	18 x 24mm	\$53.95
301230	13 x 17mm	\$64.95
301231	36 x 41mm	\$65.95
321042*	12 x 13 & 17 x 19mm	\$61.95

NEW PRODUCT

\$395.95



Timing Tool Kit Injector Pump

Locking Tool 304788 Ford & Mazda (Diesel)

- Suitable for popular Ford Ranger and Transit, Landrover Defender and Mazda BT50 2.0L, 2.2L, 2.4L and 3.2L engine applications

\$21.95

Precision Oblique Cutters

321006 135mm

- Cutting edges for cutting and twisting soft wire
- Used in fine electrical and electronics applications
- Light weight tool with low friction spring return
- Jaw opening (max): 15mm
- Cutting Capacity: Medium hard wire up to 1.2mm



\$19.95

Leather

Punch Plier 321104

- Suitable for hole punching leather, plastic and fabrics
- Revolving head with 6 different sizes
- Punch sizes: 2, 2.5, 3, 3.5, 4, 4.5mm



\$116.95

Strike-Thru Powerbar

Hand Impact Wrench 301337 1/2 Sq. Dr 560mm

- Allows access to inaccessible areas
- For pulleys, fly wheels, couplings, flanges, base plates etc
- Removes and replaces harmonic balancer pulleys without removing radiator



\$4.95

Parts Cleaning Brush 301004

- Ideal for cleaning engine and transmission spares, brake parts and bearings
- Strong and durable bristles with heavy duty nylon handle



\$53.95



Professional Breaker Bar 301245

- Square drive design with 180° rotating head for increased versatility
- Thick neck heavy duty design
- Overall Length: 610mm (24")

\$7.95

Windscreen Washer Tool

Nozzle Cleaning Needle 301164

- Universal double ended windscreen washer jet cleaning and adjustment tool

\$15.95

Wheel Grinder Dresser

301707

- For dressing, truing, sharpening and removing glaze from solid grinder wheels
- Cast iron handle with six dresser wheels suitable for most types of grinder wheels



\$5.95

Wire Brush Wooden Handle 321077

- Suitable for removing rust, corrosion, scale and ingrained dirt
- Bristles are hardened and tempered for strength and durability
- Oil resistant ergonomic wooden handle prevents slippage when in use



\$103.95

Oil Pan Separator & Cleaner Kit 321801

- Specialty tool for separating oil sumps without warping or damaging surface
- Blade manufactured from high grade SK5 for strength and durability
- Includes cleaning pads and spare copper blade



\$13.95

Inspection Mirror

Telescopic 301012 Square

- Telescopic shaft
- Dual ball joint for maximum rotation and versatility

Mirror	Telescopic Range
50 x 88	215 - 490mm



\$17.95

Pick-Up Tool

301697 Clam Style 700mm

- Flexible shaft with spring loaded extendable retrieval claw function
- Probe Ø: 7mm
- Head Ø: 15mm
- Claw Opening (Max.): 25mm

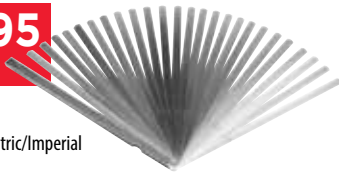


\$53.95

Feeler Gauge

321669 25 blade Metric/Imperial

- Manufactured from high quality steel for strength, durability and accuracy
- Designed for measurement of small gaps, ideal for use in engineering and automotive applications
- 0.038 - 1.016mm (0.0015-0.040")



\$14.95

Pick & Hook Set

301043 Miniature 130mm 4 Piece

- Ideal for scraping, scribing, marking, picking and seal removal



\$7.95

Oil Seal Pick Set

301297 2 Piece

- Handy double ended two piece set designed for easy removal of oil seals and O-rings



\$105.95

Wheel Hub & Stud Cleaner Kit

321204 8 Piece

- For cleaning corrosion on wheel hub surfaces and wheel studs
- Includes drill attachment and spare pads
- Brush size: 13mm & 18mm
- Grinding pad: Ø23mm x 3 & Ø15mm x 2



\$79.95

Flywheel Locking Tool

304787 Hyundai/Kia

- Specialty tool for locking flywheel when removing or torquing flywheel bolts
- Suitable for use when loosening or tightening harmonic balancer bolt



\$72.95

Flaring Tool 301701

Double Lap

- For copper, brass, mild steel and aluminium tubing
- Suitable for creating single and double lap flares in sizes 4.75, 5, 6, 8, and 10mm
- Includes a mini tube cutter capable of cutting plastic, brass, copper, aluminium and mild steel tubing



\$76.95

Wheel Hub Cleaner

321078 Dia: 150mm 1/2" Sq. Drive

- Cleans the surface of the wheel hub
- Removes corrosion and debris to ensure flush fitment of wheel surface



WHILE STOCKS LAST!

\$39.95 EACH



Bit Socket Sets

- Universal joint sockets used in modern automotive applications
- Socket set features square drive with universal joint design, extension bar, sliding T-Handle and ratchet adaptor
- Manufactured from drop forged vanadium steel for maximum strength and longevity

Part No.	Type	Square Drive	Description
301175	SAE Hex	3/8"	10 Piece Set
301176	Torx	3/8"	10 Piece Set
301177	Metric Hex	1/2"	10 Piece Set
301178	SAE Hex	1/2"	10 Piece Set
301179	Torx	1/2"	10 Piece Set

WHILE STOCKS LAST!

\$39.95



Star-E

Socket Set 301291 Extra Long 1/2" Sq. Dr. 5 Piece

- Sockets are 140mm long

Size E10, E12, E14, E16 & E18

WHILE STOCKS LAST!

\$39.95 EACH



Universal Joint Socket Sets

- Universal joint sockets used in modern automotive applications
- Socket set features square drive with universal joint design, extension bar, sliding T-Handle and ratchet adaptor
- Manufactured from drop forged vanadium steel for maximum strength and longevity

Part No.	Type	Square Drive	Description
301848	SAE Hex	1/2"	8 Piece Set
301849	Torx	1/2"	8 Piece Set

WHILE STOCKS LAST!

\$94.95



Insert Bit Socket Master Set

301981 16 Piece

- Insert bit socket set for use on Metric Hex, Torx and E-Star fasteners
- Each insert bit and socket features a 22mm Hex end to fit either the supplied 3/4" and 1" Sq. Dr. x 22mm Hex adaptors
- 16 piece set supplied in blow mould storage case
- Bits and sockets are 107mm long

WHILE STOCKS LAST!



Insert Socket Sets

- Features a 22mm Hex end to fit the supplied 3/4" Sq. Dr. x 22mm adaptor
- Also comes with L-Key 4mm for secure location of bits into adaptors

Part No.	Description	Length	PRICE
301983	TORX Bit Set	T70, T80, T90, T100	\$39.95 EACH
301984	E-Star Socket Set	E18, E20, E22, E24	
301985	TORX Bit Set	T70, T80, T90, T100	

WHILE STOCKS LAST!

\$4.95

Bricklayer Line Pins 301631 2 Pack

- Suitable for use with hardened mortar
- Length: 150mm

\$37.95

Centre Punch

- 321040 Automatic
- No hammer required for operation
- Made in Japan

Thread Files

- Restore damaged, worn or corroded threads
- For left and right handed threads

Part No.	Thread Pitch Range	Type	PRICE
301065	0.80, 1.00, 1.25, 1.50, 1.75, 2.00, 3.00mm	Metric	\$47.95 EACH
301066	10, 11, 12, 14, 16, 18, 20, 24 (TPI)	Imperial	

\$14.95

Screw Extractor Set

- 301075 6 Piece
- For removal of broken screws, bolts or studs
- Size: 3–25mm

\$23.95

Battery Alternator Voltage Tester

- 302147
- Professional LED voltage testing tool designed to test battery condition and alternator charge voltage
- For use on 12V vehicle applications only
- Manufactured utilising plastic body with magnetic backing for hands free operation

**\$73.95
FROM**



Torque Wrenches

- Click-stop style design with heavy duty cam
- Robust slim style, reversible 24 tooth ratchet head and security locking handle mechanism for heavy duty applications
- Ideal for automatic transmission service

Part No	Length	Dual Scale	Sq. Dr	PRICE
301097	280mm	12–24 Nm/17–212 ft.lbs	1/4"	\$93.95
301098	370mm	7–108 Nm/5–80 ft.lbs	3/8"	\$73.95
301099	470mm	14–203 Nm/10–150 ft.lbs	1/2"	\$74.95

\$44.95

Wire Terminal Tool Kit

- 302027 2 Piece
- Designed for easy removal of wires from connectors
- Eliminates wire or connector damage
- Rectangular blades for pack-com terminals, flat blade to open connectors, fork for ALDL connector
- Prongs depress the **barbs** on conventional terminals
- Applicable to most vehicles

Soldering Iron

- For the professional tradesman or DIY enthusiast
- Premium quality, professional features while remaining simple, efficient and easy to use

Part No	Wattage	Heat Range	Voltage	PRICE
302102	50Hz 60W	460–480°C	240 VAC	\$25.95
302104	50Hz 100W	480–500°C	240 VAC	\$38.95

\$125.95



OBDII EOB & CAN Code Reader

- 302200 Universal
- Retrieves generic fault codes P0, P2, P3 and U0 including manufacturer specific codes P1, P3 & U1 and pending codes
- Features one click quick function key for emission readiness check, live data check, default datastream check and DTC check
- Large 2.0" TFT colour display and LED indicators with built in speaker
- Updated with the latest software version to suit most popular vehicles
- Resets and clears check engine light codes (MIL), views freeze frame data and vehicle identification number readout (VIN)
- Applicable for vehicles from 1996 and later with OBDII/EOBD or CAN

\$407.95

Circuit Tester Professional Multi-Function

- 302193 12–24 Volt
- Large high resolution screen for easy readout
- Supplies power and ground for functional component testing
- Suitable for voltage and polarity testing, continuity testing, activating components in or out of the vehicle
- Retains min/max values
- Bright LED torch feature for use in low light situations



\$190.95

Multi-Head Ratchet Crimper

- 302018 220mm
- Crimping plier kit for various automotive terminals
- Suitable for ignition leads, engine wiring harness, power cables, speaker and AV cables and etc
- Seven interchangeable crimp dies and one ratcheting crimper



\$45.95

Ratcheting Crimping Pliers

- 302021
- Standard 220mm
- For fast, efficient and easy crimp work



\$71.95

Circuit Tester Digital

- 302191
- Heavy duty flexible spring cord extends 700–300mm
- 6–24 Volts 90mm Probe



\$21.95

Circuit Tester 302144 6–24V (DC)

- Heavy duty circuit testing tool
- High impact transparent handle, steel probe, replaceable bulb, strain relief spring lead design and crocodile clip



\$11.95

Battery Hydrometer

- 303185
- Measures the specific gravity of the electrolyte
- Rapid test quickly and easily determines the battery condition during service and repairs
- Heavy duty acid resistant rubber bulb and hose
- Suitable for 6, 12, 24V electrical systems



\$280.95

Glow Plug Socket Set

- 304044
- Universal Joint 9 Piece
- Allows the removal of glow plugs in confined areas
- Includes two decarbonising drill bit and puller
- Suitable for 8, 9, 10, 12, 14, 16mm hex glow plugs



\$176.95

Compression Tester Kit

304175

Petrol 300PSI

- A genuine professional mechanics petrol compression tester supplied in heavy duty case with foam inlay
- Dual calibrated gauge, stainless steel braided high pressure hose with adaptors
- Sizes: M10, M12, M14, M16



\$93.95

Timing Gear Holder

304200 Universal

- Hold camshaft sprocket to remove and install centre bolt
- Suitable for adjusting timing during service and repairs
- Fully adjustable for various size sprockets
- Range: 50 - 150mm



\$343.95

Camshaft Holding Tool Kit

304201 22 Piece

- Designed to hold camshaft, crankshaft, oil pump and water pump pulleys, sprockets and tail shafts while loosening and tightening the fixing bolts
- Manufactured to OEM equivalent specifications
- Suitable for petrol and diesel engines
- Equivalent OEM: T10172/A & T10554

\$664.95

diesel

INCLUDES
APPLICATION LIST
AND USER GUIDE



Compression Tester

Master Kit 304600 Diesel 1000PSI

- Supplied with a wide range of glow plug adaptors, dummy injectors and a universal clamp/adaptor set

\$40.95

Valve Shim Adjusting Tool Set

304053 Toyota/Lexus/Nissan

- Essential tool for adjusting shims on Toyota/Lexus and Nissan engines
- Includes bucket lifting pliers and holding tools
- OEM Equivalent: Toyota 09248-55040 and Nissan KV10115150



\$180.95

Diesel Injector Port Cleaning Kit

304052

- For cleaning diesel injector ports prior to installing new injectors
- Removes carbon build up
- Suitable for all diesel applications
- Includes various size brushes and adaptors



\$290.95



Turbo Boost Leak Pressure Tester

304999 9 Piece

- For diagnosing fine boost leaks in forced induction engines
- Professional kit pressurise the turbo charging system without having the engine running
- Suitable for testing turbo plumbing, intercooler, turbo housing and blow off valve etc
- Size range: Ø35 - 90mm
- Working pressure: 25psi

\$13.95

Disc Brake Piston Cube Rear

310269

- Use to return the brake caliper piston to the resting position when removing, installing or carrying out service repairs to the disc brakes
- Fits five different cavity configurations and most popular vehicles
- Operated with 3/8" square drive ratchet



\$54.95



Lever Action Grease Gun

305219 Heavy Duty 450g

- With 150mm steel extension, 300mm flexible hose and 4 jaw coupler
- Suitable for both cartridge and bulk fill
- Bulk capacity: 650cm³
- Output: 1g per stroke
- Pressure: 69,000 kpa

\$110.95



Flywheel Locking Tool

304203 Ford

- For the locking of the fly wheel during engine servicing and repairs
- Includes 3 different side adaptors
- Suitable for various Ford models with petrol and diesel engines

\$64.95

Pistol Grease Gun

305221 Heavy Duty 450g

- 100mm steel extension, 300mm flexible hose and 4 jaw coupler
- Suitable for both cartridge and bulk fill
- Bulk capacity: 650cm³
- Output: 0.5g per stroke
- Pressure: 34,500 kPa



\$120.95

Rotary Drum Pump

305251 50-205 litre drums

- For the transfer of diesel, kerosene, heating oils, motor oils, lubricating oils (up to SAE 90) and non-corrosive fluids of light to medium viscosity
- Heavy duty cast iron vanes with hi nitrile seals
- Adjustable telescopic suction tube with 2" cast iron bung
- Output: 5 litres per 20 turns



Fluid Change Syringes

- For neat, clean and accurate fluid suction and dispensing
- Suitable for engine oil, gear oil, differential oil etc
- Replacement seal kits available

Part No	Capacity	Extension Hose	PRICE
305151	1.5 Litre	400mm	\$88.95
305152	200ml	200mm	\$44.95

\$109.95

Coolant Filter Funnel Set

305092

- Universal funnel for refilling cooling system and assisting in bleeding air
- Fits directly onto filler neck or expansion tank
- Features convenient tap to prevent spilling
- Includes five adaptors to suit most vehicles (31, 35, 40, 42, 45mm)



\$25.95

Oil Filter Remover

305021 3 Jaw

- Adjustable 3 jaw oil filter remover suitable for 60-120mm diameter filters
- Includes 1/2" to 3/8" square drive reducer adaptor



\$54.95



Oil Filter Remover - Webbing Strap Wrench

305073 ½" Sq. Dr

- Suitable for removing stubborn spin-on filters of up to 150mm diameter
- Width: 50mm



Pump Up Pressure Sprayers

- Pump action pressure sprayer with heavy duty viton seals
- Ideal for most workshop liquids and solvents
- Adjustable nozzle from mist to direct jet spray pattern

Part No.	Working Pressure	Capacity	PRICE
305153	50-70psi	1 Litre	\$36.95
305154	50-70psi	2 Litre	\$46.95

\$128.95



AdBlue® Transfer Pump Syringe

305158 500ml

- Specialty transfer pump syringe designed for AdBlue® filling and extraction
- Manufactured from materials to resist urea based fluids such as AdBlue®



\$10.95



Oil Filter Remover 305211 Nylon Strap ½" Sq. Dr

- Sturdy non-slip nylon strap for spin-on type filters of up to 150mm (6") in dia.
- Width: 50mm

\$54.95

Oil Drain Pan

305382 14L

- Suitable for most automotive fluids and chemicals
- Durable, high density polyethylene
- 14 litre capacity with easy pour spout



AdBlue®

Funnels 1.1 Litres

- Suitable for most passenger vehicles and light commercial vehicles with AdBlue® filler necks
- Manufactured from materials resistant to urea based fluids such as AdBlue®
- Supplied with lid for mess free storage

Part No.	Description	PRICE
305400	Straight	\$40.95
305401	Angled Spout	\$35.95



\$92.95

AdBlue®

Filler/Extraction Syringe

305402 1.5L

- Specialty syringe designed for AdBlue® filling and extraction
- Safe and efficient way to handle AdBlue®
- Suitable for all passenger vehicles, LCV and heavy vehicles etc
- Features large double seal plunger and 410mm suction tube



\$250.00

Air Pulse Parts Cleaner

305162 Pneumatic 20L

- Portable air pulse parts cleaner to attach to standard workshop airline
- Agitates submerged part to loosen dirt and grime
- Suitable for use with any water based degreasers
- Size: 600 x 450 x 270mm



\$66.95

Spray Cleaning Gun

305165 Flexible Hose 320mm Pneumatic 1 Litre

- Flexible head allows for deep cleaning in hard to reach areas
- Use with engine degreaser and non flammable solvents



\$77.95

Sandblasting Gun

305166 1 Litre

- Remove contaminants on hard surfaces such as rust, paint and lacquer or to smooth or roughen surfaces
- Supplied with adjustable steel nozzle to control output flow rate



\$98.95

Diesel Injector Cap Nut Set

307351 12 Piece

- Seals fuel lines and components from debris and contamination during service or repairs
- Suitable for high pressure pumps, fuel lines, injectors, fuel rails etc
- Suitable for most common diesel and high pressure petrol fuel lines
- Contents: 6 x M12 x 1.50 and 6 x M14 x 1.50



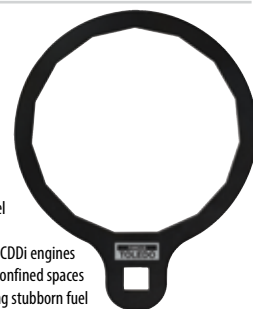
\$28.95

Fuel Filter Wrench

307000

Diesel Hyundai/KIA

- Essential tool for removing diesel fuel filters on Hyundai and KIA models
- Applicable for Hyundai/KIA 2.0-2.2L CDDi engines
- Thin design allows enable to use in confined spaces
- ½" Square drive suitable for removing stubborn fuel filters



\$107.95

Injector Fuel Rail Puller 307011

Holden (GM)

- For removing injector fuel rails
- Special design puller avoids damaging injectors, injector bores and cylinder head during removal
- Both hooks reach under fuel rail to gently remove injectors evenly
- Suitable for V6 3.6L SIDI and 2.0L ECOTEC engines
- Manufactured from heavy duty steel to OEM specifications
- Equivalent OEM: EN-49248



\$76.95

Cooling System Flushing Gun 308239

- Provides high pressure cleaning of radiators and heater cores
- Simply connect air line and water supply and pull trigger
- Stepped cone sizes Ø 19, 29, 32, 37, 40mm



\$461.95

Cooling System Tester 308380

Truck Tapered Adaptor 5 Piece

- Suitable for heavy vehicle
- applications includes four
- expandable tapered adaptors and pressure pump
- Pressure pump ranges from 0-35psi (0-2.5bar)
- Adaptor sizes: 17-35mm, 26.5-41mm, 37-50mm & 47-60mm



ME SAVINGS

**FAMOUS
TOLEDO**
EXCELLENCE BY DESIGN

\$19.95

Antifreeze Tester

308499 Ethylene Glycol

- For testing ethylene glycol based coolant
- Temperature range: -37 to -7°C



\$40.95

Tyre Lever

309035 600mm

- Tyre lever to easily remove and refit tyres on to rims
- Manufactured from hardened and tempered drop forged chrome vanadium steel



\$12.95

Tyre Thread Depth Gauge

309102 Analog

- Accurately measures tyre tread depth, shoulder wear and centre tyre line
- Pencil type with handy pocket clip for easy storage
- Calibrated with metric and imperial graduations
- Suitable for cars, motorcycles, light commercial and heavy vehicles



\$282.95

Torque Bar & Deep Socket Set

309512

- ½" Sq. Drive 8 Piece
- Designed to accurately torque wheel nuts to correct specifications
- Thin wall with protective Polypropylene sleeve ensures wheel surface is damage free
- Socket sizes: 17, 19, 21, 22mm
- Torque bar rating: 65, 80, 100, 120ft. lbs (88, 108, 135, 162nm)



\$249.95

Brake Disc Removal Kit

310260 170-400mm

- Removes stubborn brake discs
- Reduce impact on wheel bearings, ball joints, suspension and electrical sensors
- Suitable for passenger and light commercial vehicles
- Capacity: 170 - 400mm



\$15.95

Disc Brake Pad Spreader

310265

- Universal tool used to return the brake caliper piston to the resting position
- during removal, installation or service repairs to the disc brakes
- Threaded T-bar handle operation
- Suitable for most brake calipers



\$110.95

Brake & Tyre Measuring Tool

310019

- Accurate measurement of brake disc, brake pad thickness and tyre tread wear without removing wheel
- Suitable for passenger, 4WD and light commercial vehicles
- Stoppers to record readings
- High grade aluminium for long service life



\$257.95



Brake Pressure Bleed Kit

309980 3 Litre

- Professional one person operation brake bleeding kit
- Efficient way to bleed brake system after repairs and flush out old brake fluid during service through themaster cylinder
- Safe to use on most brake systems equipped with ABS
- Pressure (Max): 60PSI



\$398.95

Brake Bleeder Adaptor Set

309981 6 Piece

- Specifically designed for use with Brake Bleed Pressure Kit (309980)
- Flush brake fluid by pressuring master cylinder
- Suitable for popular make and model brake master cylinders including Toyota, Ford, Hyundai, Honda etc.



\$133.95

Brake Bleeder Adaptor Adjustable

309982 Universal

- Specifically designed for use with Brake Bleed Pressure Kit (309980)
- Tapered rubber adaptor with swivel fitting
- Adjustable clamping arms and depth adjustments
- Safe to use on brake system equipped with ABS
- Quick connect coupler prevents back flushing and avoid spills when disconnecting
- Clamping range: 116-168mm
- Depth: 86.5-103mm



\$713.95



Universal Bearings and Bush/Press & Pull Sleeve Kit

311020

- Universal tool set for extracting and drawing in bushes, bearings, seals etc
- Fully universal applications for Car, LCV & HGV
- Inside diameter range: 34-80mm
- Outside diameter range: 44-90mm
- Threaded rods: M10, M12, M14, M16, M18



\$62.95



Coil Spring Compressor Professional Set

311284

- Specifically designed for safe and effective compression of automotive coils springs
- Jaw width: 85mm
- Operating range: 300mm



MADE IN GERMANY

EOFY TAX TI

\$126.90**KNIPEX Cobra® Set****00 31 20 V01**

- Set containing two popular Cobra® pliers
- Push button for adjustment
- Self-locking on pipes and nuts

Description	Length mm
Cobra® HighTech Water Pump Pliers	180
Cobra® HighTech Water Pump Pliers	250

**\$99.85****KNIPEX Alligator® Set****00 31 20 V02**

- Set containing two popular Alligator® pliers
- Box joint design
- Self-locking on pipes and nuts
- Ideal for outdoor work - insensitive to dirt

Description	Length mm
Alligator® HighTech Water Pump Pliers	180
Alligator® HighTech Water Pump Pliers	250

**\$186.15****KNIPEX Cobra® & Plier****Wrench Set 00 31 20 V03**

- Set containing two popular pliers
- Includes Cobra® - gripping surfaces with special hardened teeth and Plier wrench - smooth jaws, pliers and wrench in a single tool

Description	Length mm
Cobra® HighTech Water Pump Pliers	250
Plier Wrench	180

**\$49.95****Dismantling Tool 162016**

- For stripping all common round cables
- Self-tightening holding lever
- With adjusting screw for cutting depth adjustment
- Turnable blade for circular and longitudinal cutting
- Spare blade inside the handle
- Secure grip due to soft component material on handle and holding lever to avoid slipping

**\$128.30****Mini Pliers Set****00 20 72 V06**

Belt tool pouch 2 Pieces

- For gripping, holding and cutting tasks, both large and small
- **KNIPEX Mini Cobra®** 87 01 150 adjustment directly on the workpiece at the press of a button
- **Needle nose combination pliers**
- 08 22 145: ideal for working in hard-to-reach places thanks to the slender head shape
- Soft, medium hard and hard wire up to Ø 2mm



95 11 160



95 12 160



CABLE CUTTING MADE EASY

KNIPEX StepCut**Cable Shears 160mm**

- Innovative step cutting separates wires one by one to save energy
- Small, light, strong: comfortable cutting without crushing and just 160 mm in size
- Cutting is up to 40 % easier than with standard cable shears of the same length!
- Cuts multi-core stranded copper and aluminum cables

Part No.	Handles	Capacity	PRICE
95 11 160	Plastic Coated	15.0mmØ / 50mm²	\$82.90
95 12 160	Comfort Grip	15.0mmØ / 50mm²	\$88.00

**\$60.95****Needle Nose****Combination Pliers****08 22 145 145mm**

- Only 145mm in length, small and compact design allows access to areas where conventional pliers can't fit
- Easy cutting with high leverage joint
- Long service life and stable tips

Handles	Length mm	Capacity mm	
		Hard	Cable
Comfort	145	2.0	Ø 8.0

\$64.00**KNIPEX TwistCut****90 22 01 100mm**

- For the reliable and fast cutting of plastic corrugated pipes with the universal capacity range of diameters from 13 to 32 mm
- No damage to the internal cables or pipes
- Made of glass fibre reinforced multi-component plastic with soft gripping zone



Length mm	Pipe Cutting Capacity mm
100	13 - 32



71 01 200



71 02 200

Cobolt® Compact Bolt Cutters 200mm

- For soft and hard wire also piano wire
- Cuts bolts, nails, rivets, etc. up to 5.2 mm dia.

Part No.	Handles	Capacity mm			PRICE
		Hard	Med Hard	Piano	
71 01 200	Plastic	4.0	5.2	3.6	\$99.95
71 02 200	Comfort Grip	4.0	5.2	3.6	\$109.90

\$162.40**Professional Circlip Plier Set****00 19 56 4 Piece**

- Contains four popular Knipec circlip pliers in tool roll
- Internal straight & angled tip 19 - 60 Ømm
- External straight & angled tip 19 - 60 Ømm



Part No.	Type	Size of Bore	Style	Qty
44 11 J2	Internal	19 - 60 Ømm	Straight Tip	1
44 21 J21	Internal	19 - 60 Ømm	90° Angled Tip	1
46 11 A2	External	19 - 60 Ømm	Straight Tip	1
46 21 A21	External	19 - 60 Ømm	90° Angled Tip	1

\$55.00



Cable Shears

95 05 165

- No crushing, slight deformation of the cable only
- Guard prevents operators' fingers being pinched
- Adjustable bolted joint
- Shears body: surgical steel, stainless, vacuum-hardened
- With opening spring and locking device
- Cuts cables up to 10 mm dia./ 24 mm²
- Not suitable for steel wire and hard drawn copper conductors

\$99.85

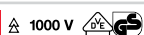


Upholstery Pliers

91 92 180

- For the professional fixing of seat covers on profiled seats to the seat frame with all popular upholstery clips
- Upholstery clips can be easily pressed together due to a good transmission ratio of the pliers
- User-friendly operation thanks to multi-component grips durable and strong

\$35.70



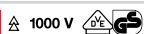
SLIM



1000V Slotted Screwdriver 98 20 65 SL 6.5mm

- Reduced blade isolation diameter for recessed spring and screw elements
- Ergonomically optimised dual component handle for fatigue reduced work
- Handle design prevents rolling

\$27.80



SLIM



1000V Phillips® Screwdriver 98 24 01 SL PH1

- Reduced blade isolation diameter for recessed spring and screw elements
- Ergonomically optimised dual component handle for fatigue reduced work and optimum transmission of force
- Handle design prevents rolling

NEW PRODUCT

\$66.00

KNIPEX BIX Plastic Pipe Cutter

90 22 10 BK

- Cuts pipes quickly, cleanly and without shavings
- Can be used to cut sealing sleeves during final assembly
- Locking mechanism for safe transport
- Two spare blades integrated in the tool
- Ideal for electrical and plumbing work



\$54.00



Control Cabinet Key

00 11 02 Short version

- For control cabinets and shut-off systems in the supply of gas, water and electricity
- With bit insert: slot 1.0 x 7 mm and cross recess PH 2
- With adapter for 1/4" bits chained to key
- Additional bit adapter for 1/4" bits inside one profile
- Zinc die-casted
- Short version, total length 44 mm

90 10 185



90 25 185



Plastic Pipe Cutters

- Perfect cutting results: the hose and pipe cutter for professionals
- Not suitable for cutting cables
- With opening spring and locking device
- Blades: special tool steel, oil-hardened, interchangeable
- **90 10 185** Ideal for all liquid, multi-layer and pneumatic hoses/pipes, application range from 4 - 20mm
- **90 25 185** For cutting thin walled plastic pipes (conduit plastic pipes) and flexible hoses, also with fabric reinforcement, of plastic and rubber up to 25.0mm diameter

Part No.	Cutting Capacity	Style	PRICE
90 10 185	4-20mm	Multi-layer & Pneumatic Hoses	\$150.00
90 25 185	25mm	Flexible Hoses & Plastic Conduit Pipes	\$133.50



\$42.30



Long Nose Pliers

30 21 140 140mm

- Heavy duty and wear resisting
- Chrome vanadium electric steel, forged, oil-hardened
- Long, half round jaws; knurled gripping surfaces

\$380.75

125mm
180mm
250mm
Sizes



Pliers Wrench Set

00 19 55 S6 3 Piece

- Contains 125, 180, and 250mm Plier Wrenches
- Replaces the need for sets of metric and imperial spanners
- Smooth jaws for damage free installation of plated fittings
- - work directly on chrome
- Capacity on nuts 23, 40 and 52mm



86 03 125

86 03 125

86 03 125

86 03 125

86 03 125

86 03 125

86 03 125

86 03 125

86 03 125

86 03 125

86 03 125

86 03 125

86 03 125

86 03 125

86 03 125

86 03 125

86 03 125

86 03 125

86 03 125

86 03 125

86 03 125

86 03 125

86 03 125

86 03 125

86 03 125

86 03 125

86 03 125

86 03 125

86 03 125

86 03 125

86 03 125

86 03 125

86 03 125

86 03 125

86 03 125

86 03 125

86 03 125

86 03 125

86 03 125

86 03 125

86 03 125

86 03 125

86 03 125

86 03 125

86 03 125

86 03 125

86 03 125

86 03 125

86 03 125

86 03 125

86 03 125

86 03 125

86 03 125

86 03 125

86 03 125

86 03 125

86 03 125

86 03 125

86 03 125

86 03 125

86 03 125

86 03 125

86 03 125

86 03 125

86 03 125

86 03 125

86 03 125

86 03 125

86 03 125

86 03 125

86 03 125

86 03 125

86 03 125

86 03 125

86 03 125

86 03 125

86 03 125

86 03 125

86 03 125

86 03 125

86 03 125

86 03 125

86 03 125

86 03 125

86 03 125

86 03 125

86 03 125

86 03 125

86 03 125

86 03 125

86 03 125

86 03 125

86 03 125

86 03 125

86 03 125

86 03 125

\$229.95

Hydraulic Twin Leg Puller Kit 152400

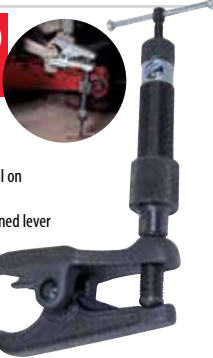
- Ideal for a wide range of auto and industrial applications including gear pulling, bearing extraction and hub removal
- Forged alloy steel legs for added strength
- Spread 50 - 100mm,
- Reach 100mm
- Made in England



\$550.00

Ball Joint Separator HGV 180700 Hydraulic

- Enables ball joint separation and removal on heavy goods vehicles
- Heavy duty manufacture with strengthened lever and fork allowing for greater force to be applied
- Manufactured from alloy steel SCM 440
- Jaw Opening: 70mm
- Throat Width: 36mm
- Throat Depth: 50mm



WHILE STOCKS LAST!

Loadstar Integrated Hydraulic Pullers

- Easy to use lightweight pullers with inbuilt pump and ram
- Suitable for tough heavy duty applications where standard mechanical pullers cannot be used
- Pump lever can be rotated 360° to assist pulling process in confined spaces
- Allows for both 2 or 3 leg pulling



Part No.	Capacity	Reach mm	Spread mm	Stroke mm	PRICE
204 004	4 Tonne	185	255	60	\$1049.95
204 006	6 Tonne	220	330	70	\$1149.95
204 008	8 Tonne	230	350	85	\$1249.95

\$119.95 FROM

Bearing Separators

- Individual separators for removing and refitting bearings, etc
- Can be used with any of the Sykes-Pickavant design of pullers where standard legs cannot gain access



Part No.	Spread mm	PRICE
095 000	10 - 55	\$119.95
095 100	20 - 105	\$189.95
095 200	35 - 140	\$229.95

WHILE STOCKS LAST!

\$44.95

Tube Cutter 022100 3-32mm

- For cutting automotive brake and clutch pipe
- For cutting aluminium, brass, copper and mild steel tubing
- Telescopic action and grooved rollers allow cutting close to flared pipe ends
- Features fold-away deburrer and spare cutting wheel in handle



WHILE STOCKS LAST!

\$799.00

Body Repair Set 058001 11 Piece

- High quality set of bodyshop tools
- Supplied in lockable metal case
- Contains essential dollys, hammers, spoons and adjustable body blade with 9TPI body blade



WHILE STOCKS LAST!

\$399.95

Hydraulic Nut Splitter 033600 Large

- Designed for the efficient removal of seized or rusted nuts without damage to threads
- Maximum nut size: 37mm



CLEARANCE! CLEARANCE!

\$39.95

Cambelt Pulley Puller 077420 90mm

- Removes pulleys by using the holes in the pulley to avoid risk of damage
- Spread: 40-70mm
- Reach: 40mm



\$39.95

Professional Pocket LED Pen Light 300600 Rechargeable 170mm

- Bright and robust pocket pen light for quick and easy illumination
- Lighting modes: bottom light with direct beam and work light with wide flood beam
- Inbuilt belt clip with magnet



\$87.95

Professional LED Work Light 300601 Rechargeable 260mm

- Multifunctional work light
- Lighting modes: top light with direct beam and work light with wide flood beam
- Super strong magnets and two 360° rotating hooks
- 180° swivel stand with strong inbuilt magnet



\$105.95

Professional LED Slimline Work Light 300602 Rechargeable

- Ultra-bright and lightweight slim work light illuminates hard to reach places with ease
- Lighting modes: top light with direct beam and work light with wide flood beam on adjustable dimmer switch



\$70.95

Professional Foldable LED Slimlight 300606 Rechargeable

- Handy foldable pocket pen light for quick and easy illumination
- Features three lighting modes: front fold out flood light with normal and eco modes, rear flood light and direct beam top light



\$87.95

Professional Twinbeam Pocket Worklight 300608 Rechargeable

- Multifunctional Twinbeam worklight contains both a spot light and flood light
- Versatile pocket size
- Direct beam spotlight and eco, normal and full power flood light modes
- 180° flexible handle with inbuilt super strong magnet



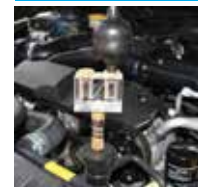
\$140.95

Professional Floor and Area Worklight 300609 Rechargeable

- Multifunctional flood and area light suitable for use in workshops, building and camping
- Stepless dimmer switch easily adjusts the brightness from 60 - 1000 Lumens
- Super strong magnet and hook is suitable for hands free



CLEARANCE! CLEARANCE!



\$179.95

Combustion Leakage Tester 331455

- Essential tool for detecting the presence of combustion gases in the cooling system
- Suitable for use with both petrol and diesel engines
- Supplied with both standard and sensitive reaction test fluid (250ml)



WHILE STOCKS LAST!

\$699.95

Heavy Duty 1/2" Torque Wrench 800340

- Unique profiled cam and reaction plate provides an unmistakable signal that can be seen and felt which reduces the possibility of over torquing
- Compact size is designed is ideal for passenger and light commercial vehicle maintenance

Capacity (Nm)	Capacity (Lbf. ft.)	Length mm	Ratchet Teeth
80 - 340	60 - 250	783	60



\$1099.95

Heavy Duty 3/4" Torque Wrench 800400

- Unique profiled cam and reaction plate provides an unmistakable signal that can be seen and felt which reduces the possibility of over torquing
- Robust construction provides accurate torque results and is suitable for all heavy duty applications

Capacity (Nm)	Capacity (Lbf. ft.)	Length mm	Ratchet Teeth
150 - 700	100 - 500	1150	36

WHILE STOCKS LAST!



Professional Digital Torque Wrenches

- Provides up to 12 different units of torque on a clear and easy to read digital OLED display
- Rechargeable lithium battery via the USB charging port (charging lead included)
- Push/pull torque adjustment knob that allows for rapid and accurate torque settings
- Unique Timestrip® feature that provides a visual indication of when the torque wrench is due for re-calibration

Part No.	Sq. Dr	Range Nm	Capacity (Lbf. ft.)	Ratchet Teeth	PRICE
830 101	1/2"	20 - 100	15 - 75	72	\$669.95
830 200	1/2"	40 - 200	30 - 150	72	\$699.95
830 300	1/2"	60 - 300	45 - 220	60	\$759.00
830 340	1/2"	60 - 340	45 - 250	60	\$839.00

BONUS PACK

\$189.95

CV Joint Puller Bonus Pack 080900BP

- For the removal of CV Joints on front wheel drive cars
- Avoids the need to remove the entire front axle
- No need for a hammer - reduces risk of damage to the drive axle

BONUS

Ball Joint Separator - Fork Type 195mm

- Drop forged steel design enables hammer strike operation
- Suitable for passenger and light commercial applications

WHILE STOCKS LAST!

\$39.95

Zipcut Spot Weld Remover 040 011

- Adjustable, auto-centring tool for removal of spot welds
- 5/16" hex shank for use with drill chucks of 3/8" capacity

\$69.95

Ball Joint Separator 660 550

- Simple and specific tool for ball joint removal
- Jaw Opening: 45mm
- Throat Depth: 30mm
- Throat Width: 19mm



304 Stainless Steel Cable Ties

- Perfect for the most demanding applications
- 304 Stainless Steel
- Epoxy coated for extra durability
- Stronger than nylon cable ties
- Single use ball lock

Part No.	Size mm	Qty	PRICE
CTSC154	150 x 5	100	\$37.95
CTSC204	200 x 5	100	\$40.95
CTSC304	300 x 5	100	\$48.95
CTSC354	350 x 5	100	\$52.95
CTSC504	500 x 5	100	\$62.95
CTSC604	600 x 5	100	\$72.95

\$46.95

Cable Tie Combo Pack

- Assorted black cable ties
- All popular sizes

1000
CABLE
TIES



Coloured Nylon Cable Ties

- Assorted colours and sizes
- High quality cable ties

Part No.	Colour	Length mm	Width mm	Pack Qty	PRICE
CTP07	Asst.	100 - 150	2.5	500	\$11.95
CTP25	Asst.	100	2.5 - 4.8	1000	\$24.95
CTP26	Asst.	300	4.8	300	\$43.95
CTP27	Black	100 - 200	2.5 - 3.6	200	\$7.95
CTP29	Asst.	100 - 200	2.5 - 3.6	200	\$8.95
CTP30	Military	100 - 200	2.5 - 3.6	200	\$7.95
CT205BKCD	Black	200	5	100	\$4.95
CT305BKCD	Black	300	5	100	\$10.95
CT408BKCD-100	Black	400	8	100	\$21.95

\$244.95

Double Ear Clamp Pack

TEC300 300 Pieces

- Suitable for use on compressed air, gas and liquid lines
- With standard top join pincer
- Popular sizes for a variety of applications



\$86.95

Hose Clamp Value Pack CVP82

MH/HS Perforated Band,
Part Stainless Steel

- 82 clamps in a bonus carry case
- Pack clearly marked with size range
- Popular sizes



PART
STAINLESS
82 CLAMPS

AUSTRALIAN MADE
AND OWNED

\$100.95

Vinyl Coated Clamp Pack TVC85

- Vinyl coated hose clamps
- Handy carry case, all popular sizes
- Clearly marked with size range



VINYL
COATED
85 CLAMPS

\$79.95

Rubber Lined Clamp Value Pack

TRLC90K
90 Pieces

- For pipes, cables, groups of cables, hoses etc.
- Handy carry case
- All popular sizes



RUBBER
LINED
90 CLAMPS

\$46.50
EACH



Metal Tin Snips 250mm

- Light weight metal snips for all general sheet metal work
- Suitable for cutting sheet metal up to 18 gauge
- Special alloy hardened and heat-treated cutting blades
- Comfortable grip with spring action allows for one hand operation



Part No.	Cut Type	Cutting Capacity mm dia.	Cutting Capacity Gauge
HITMS260R	Right	1	18
HITMS260L	Left	1	18

\$167.50



Monster Nipper HITMN350G 450mm

- For flat (flush) cutting of steel bars, soft bolts, rivet heads, thread rods, etc.
- Jaw has a 30° offset to keep work in view
- Special blade shape makes flatter cutting easy



CLEARANCE

\$47.00

Anchor Bolt Plier

HITAB100

235mm

- Fast and easy operation
- For hollow wall anchors



*Anchor bolts not included

HITBTW3



HITBTW6



Belt Strap Wrenches Nylon

- Strong woven nylon strap with special coating provides a strong grip even in oily conditions
- Suitable for use on steel, plastic and glass pipes, PVC conduit and tap wear
- Must have tool for all plumbing work
- One piece forged construction I-Beam handle and head
- Rubber lined nylon strap for use on sensitive surfaces like stainless steel, coated, coloured and chrome pipes

Part No.	Handle Length mm	Belt Length mm	Belt Width mm	Capacity mm	PRICE
HITBTW3	300	400	30	15-75	\$49.00
HITBTW6	200	700	30	15-165	\$66.00

\$250.00



Concrete Mesh Cutter HITRCA1050 1050mm

- Specially designed for cutting extra hard steel concrete mesh
- Comfortable rubber handles ensure a firm and safe grip during operation
- Cutting capacity high tensile 8mm



EXTRA
LONG
HANDLES

\$479.35

Rod Cutter & Bender HITRC16B 1320mm

- Two in one combination tool, for cutting and bending of concrete reinforcing rods up to 180°
- Shear cut blades cut and bend grade 60 rebar to 90° or 180°
- Extra-long tubular steel handles provide enough leverage to make for easy cutting and bending
- Capacity: 16mm



\$82.90



Wire Rope Cutter HITWC06 345mm

- Heavy duty design with built in cable locator
- Holds and locks cable in cutting position to ensure a clean and precise cut
- Notched shear cut blade is designed to cut wire rope up to 150kg/mm²
- Ergonomic and comfortable rubber grips
- Replacement cutting heads available
- Not suitable for stainless steel applications
- Max. Cutting Cap: 150kg/mm² 6mm



Reinforced Rubber Hose Cutters Heavy Duty

- Designed for cutting reinforced rubber hose
- Suitable for gas, air and water hoses that have an inbuilt steel core



Part No.	Length mm	Cutting Capacity mm dia.	PRICE
HITHC400	400	9.5-13	\$100.00
HITHC500	500	9.5-25	\$150.00

\$40.00



Hand Wire Rope Cutter HITHWC06 190mm

- Designed for cutting all soft and hard steel cable and wire
- Cuts copper aluminium 6.0mm, wire rope 2.5mm, ACSR 2.4mm
- Compact and lightweight, allows for access into restricted areas



\$100.95

Brush Drive Set

BS9145

SAE 19 Piece

- Comprehensive universal kit specifically designed for removal and replacement of bearings and oil seals
- Suits: Bearings and oil seals 3/8"-1 3/8"
- Includes Drive Handles: 11 x 105mm, 16 x 130mm, 20 x 142mm
- Includes Bush Adaptors: 3/8"-7/16", 7/16"-1/2", 1/2"-9/16", 9/16"-5/8", 5/8"-11/16", 11/16"-3/4", 3/4"-7/8", 7/8"-15/16", 15/16"-1", 1 1/16"-1 1/8", 1 1/8"-1 1/4", 1 1/4"-1 3/8"



\$322.95

Chain Breaking, Riveting & Repair Master Kit

BS70002

SAE 19 Piece

- Comprehensive tool kit for drive chain replacement and repair
- Provides the ability to break, rivet and press drive chain master links
- Forged hardened alloy steel body with 3 position handle suitable for left and right hand use
- Suits: Chain sizes: #415, 420, 428, 520, 525, #30 (50), 532, 630 and 632
- Includes: BS35101 Chain Breaking & Riveting Set
- BS3500 Chain Extractor
- BS3506 Chain Link Pliers
- BS1164 Chain Tensioner Tool



\$39.95

Chain Alignment Tool

BS70007

- Specialist tool to enable quick and accurate chain alignment
- Designed for universal use, suitable for most motorcycles and ATVs
- Affix to the rear sprocket with alignment rod facing forward to align chain
- Suitable chain sizes 420 - 630
- Manufactured from aluminium and steel for durability and a long service life.

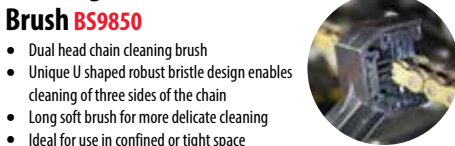


\$34.95

Chain Cleaning Brush

BS9850

- Dual head chain cleaning brush
- Unique U shaped robust bristle design enables cleaning of three sides of the chain
- Long soft brush for more delicate cleaning
- Ideal for use in confined or tight space



\$125.95

Universal Pulley Holder Wrench Set

BS3112

- Vice grip style locking wrench holds clutch hubs, flywheels, gears, pulley and sprockets during lock nut removal and installation
- Five pairs of different size pins to suit common applications
- Jaw capacity: 140mm
- Pin working capacity: 22-145mm

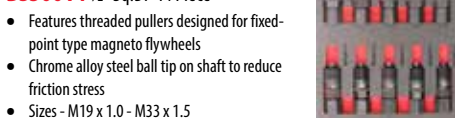


\$273.95

Magneto Flywheel Set

BS30014 1/2" Sq. Dr 14 Piece

- Features threaded pullers designed for fixed-point type magneto flywheels
- Chrome alloy steel ball tip on shaft to reduce friction stress
- Sizes - M19 x 1.0 - M33 x 1.5



WHILE STOCKS LAST!

\$8.95

Wire Retaining Tool

BS1034

- Firmly holds cables, wires and fasteners during removal and replacement
- Net diameter: 20mm
- Cable Length: 450mm



\$56.95

Waterproof Heat Shrink Tube Set

BS1031 106 Piece

- Protects and insulates components and wires
- Adhesive lined inner wall seals and protect against moisture preventing corrosion
- Quick and simple to shrink by heat gun



\$591.95

Crankshaft Installation Kit

BS30022

- Suitable for most single cylinder vertically split engines
- Chrome molybdenum alloy steel for durability and long service
- Includes 1 x installation pot, 1 x pot spacer, 1 x nut & bolt and 11 adaptors

Contents		
M7 x 1.0	M14 x 1.0	M22 x 1.0 (Yamaha FM200/250/350/400 ATV)
M10 x 1.25	M16 x 1.0	
M12 x 1.25L	M18 x 1.0	
M12 x 1.0	M14 x 1.5	M12 x 1.25 (L/H Thread)
M12 x 1.25	M10 x 1.25	

\$219.95

Cylinder Leak Down Test Kit

BS8002

- Checks the amount of cylinder leakage in 4-stroke engines
- The system will pressurise the cylinder to 60 PSI and register the total percentage of leakage past the
- Speeds up troubleshooting & helps to isolate worn components
- Covers plug sizes 16, 18, 21mm plus M18 hose for vacuum pump
- Thread sizes: M10x1.0, M12x1.25, M14x1.25, M18x1.25
- Air input: 70-160 PSI



\$8.95 EACH

Piston Locating Tools

- Designed for visually indicating the relative crank shaft and piston position at top dead centre
- For camshaft timing in addition to the timing marks
- POM tip prevents piston damage

Part No.	Thread
BS2250	M10 x P1.0
BS2251	M12 x P1.0



\$34.95

Sealing Ring Assembly Tool Set

BS5810 4 Piece

- Tapered tool set for pulling o-rings or sleeves onto brake components and hydraulic systems without risk of damage
- Size range: 14.4-22.4mm



CLEARANCE! CLEARANCE!

\$16.95

Cable Replacement Tool

BS1501 Tachometer

- Simply connect the cable and retrieve the substitute cable
- Thread: M12 x 1.0
- Cable Length: 1100mm



\$233.95

Chain Breaking & Riveting Master Kit

BS35101

- Supplied with press plates, punches and anvils
- Provides the ability to break, rivet and press drive chain master links
- Suits: Chain sizes: #415, 420, 428, 520, 525, #30 (50), 532, 630 and 632



\$124.95

Chain Installation Press Tool

BS70008

- Press tool designed to assemble the chain during repairs or replacement
- For the installation of the master link side plates into the rivet pins
- Includes rivet function to mushroom the hollow pin rivets to complete the repair
- For most 50 series chains and O-ring chains





Crosscut Chisels

- Used for cutting grooves and slots and channelling steel to get into corners where normal cross cut chisels may jam
- Forged, quenched and tempered as a whole to guarantee a good resiliency and long service life
- Chisel blades are lacquered to protect against corrosion
- Shanks dip coated in gold lacquer

Part No.	Blade Length	Shaft Size	Length	PRICE
320 200	8mm	20 x 12mm	200mm	\$20.20
320 250	9mm	23 x 13mm	250mm	\$25.25

\$211.50

Metal Working Punch Set

426 017 Interchangeable Tips 17 Piece

- Metalworking punch set with 15 interchangeable tips
- Flexible use through different tools in one set
- Brass inserts suitable for working on sensitive surfaces
- Two-component soft handguard protects from miss hits and reduces hand fatigue from excess vibrations

Contents	Size	Contents	Size
Pin Punch Insert	3, 4, 5, 6, & 8mm	Brass Inserts	4, 5, 6, & 8mm
Taper Punch Insert	3, 4, 5, 6, & 8mm	Open End Spanner	8 & 10mm
Centre Punch Insert	4mm	2 Component Handle	90mm

\$49.90

Automatic Centre Punch

- Activated by downward pressure (hammer not required)
- Impact strength is adjusted by rotation of the knurl
- Spring loaded self striking mechanism



\$146.50



ULTIMAX Wrecking Bar Set

270 002 3 Piece

- Forged, quenched and tempered working edges
- Meets every challenge
- Contains sizes: 1000 x 26 x 16mm, 600 x 26 x 16mm, 400 x 20 x 12mm

\$73.50

Taper Punch Set

424 142 With handguards

5 Piece

- Two-component soft handguard protects from miss hits, hand slippage and reduces hand fatigue from excess vibrations
- Contains: 2, 3, 4, 5 and 6mm Taper Punches



\$93.00

Chisel & Punch Set

421 102 With handguards

5 Piece

- Two-component soft handguard protects from miss hits, hand slippage and reduces hand fatigue from excess vibrations
- Contains: Flat Cold Chisel 125mm, Crosscut Chisel 125mm, Centre Punch 4mm, Taper Punches 3 & 4mm



\$16.50



Triangular Hollow Ground Scraper

462 200

- Alloy tool steel, blade ground
- Shank lacquered with zero-wear powder coating
- Slim ergonomic shape
- Comfortable wooden handle

\$100.00



Mounting Tool

449 500 with pointed tip 500mm

- Used for the alignment of holes prior to fixing
- Suitable for scaffolding assembly and steel construction work
- Special tool steel, painted
- Hardened and tempered striking head

Length mm	Shaft Size mm	Tip Size mm	Weight g
500	20	5	1035

\$168.00



Chisel & Punch Foam Tray Set

REN11 7 Piece

- Popular chisels, punches, mini wrecking bar with chisel end and automatic centre punch

Part No.	Description	Size mm
310 250	Flat Cold Chisel	250
450 006	Parallel Pin Punch	6
450 008	Parallel Pin Punch	8
450 010	Parallel Pin Punch	10
463 260	Seal Scraper	260 x 25
430 131	Automatic Centre Punch	130
279 300	Mini Wrecking Bar	300

\$26.90

Mini Wrecking Bar

279 300 300mm with Chisel End

- Wrecking bar claw on one end and a flat cold chisel on the other
- Suitable for dismantling wooden pallets and use in space restricted areas
- Made from special tool steel for added strength and durability
- Red powder coated finish protects from all elements

METRINCH

FITS METRIC, INCH & ROUNDED NUTS AND BOLTS



ONE TOOL SET IS ALL YOU NEED

\$82.90

Deep Wall Socket Set

MET-0330 3/8" Drive 12 Piece



\$118.00

Standard Socket Set

MET-0420 1/2" Drive 17 Piece



ME SAVINGS

MATSON

\$185.00

Battery & Alternator Tester BT400

- Microprocessor controlled
- Easy to read LCD screen
- Reverse polarity protection
- Accurate results in 2 seconds
- Convenient in-vehicle option tests battery and starting/alternator system in sequence
- No internal battery required



\$899.00

Battery/System Tester BT2100 with printer

- 6V & 12V professional battery testing
- Bluetooth connection to smart devices to send digital results
- 12V & 24V starting and charging system (alternator) testing
- Tests internal resistance (milli-Ohms)
- Inbuilt printer with customisable fields
- Suits most lead-acid battery types, including Stop-Start



INCLUDES
START
STOP
BATTERY TESTING



\$549.00

Digital Battery & System Analyser BT900 with printer

- Tests conventional and Stop-Start batteries
- Tests vehicle alternator, starting and charging systems
- Suits battery types include - regular flooded, AGM flat plate, AGM spiral, GEL, Enhance Flooded (EFB) and AGM (Stop-Start)
- Tests to global standards - SAE (CCA), JIS, EN, DIN & IEC

INCLUDES
START
STOP
BATTERY TESTING



\$199.00

Mini Lithium Jump Starter MA10000

- 12V 200A starting current
- 10W Wireless device charging
- 10000mAh capacity (37Wh)
- Back-up power for portable devices
- Powerful torch function
- Full safety protections



\$339.00

12V Lithium Jump Starter MA21000

- 12V 550A starting current
- 21000mAh capacity (77.7Wh)
- Back-up power for portable devices
- Powerful torch function
- Full safety protections



CLEARANCE! CLEARANCE!

\$307.95

Power Inverter MA1100 1100 WATT

- Modified Sine
- Converts 12VDC to 240AC
- Modified Sine Wave Output 1100 Watt Continuous, 2200 Watt Peak
- Dual USB Charging
- LCD Display shows battery voltage and real-time wattage consumption



1 meter, high quality power cables

Remote control and cable

ANL Fuse

BONUS PACK

\$95.95

Waterproof Battery Charger MABP019 1.2AMP / 12Vdc

- One step operation
- Fully automatic charging
- Maintains optimum battery condition



BONUS Jumper Leads

- 2.4M, 400 AMP
- 6B & S / 15mm² cable



Waterproof Battery Chargers

- One step operation
- Fully automatic charging
- Maintains optimum battery condition



Part No.	AMP	Output	PRICE
AE150E	1.5 AMP	12Vdc	\$89.95
AE1000E	10 AMP	12Vdc	\$229.95

NEW PRODUCT

\$23.95

Battery Accessory Terminal MA15PBL1

- Positive polarity
- Dual 8mm removable stud
- Includes removable brass positive SAE battery post
- Compatible with squared OE vehicle wiring terminations
- Nickel plated for corrosion and wear resistance
- Terminal cover included



\$335.95

6/12/24 Volt Charger IR61224

- Selectable Amp and Voltages
- Electronic touch button control
- Chemistry selectable: GEL, Flooded(SLA, Deep Cycle, AGM), Calcium



\$594.95

4 in One Charger MA4INONE

- Four different charge voltage settings
- Fully automatic Switch Mode charging and maintenance capabilities
- Offers protection against short circuiting, reverse connection and overheating
- Charges Lead Acid, NiMH, AGM and Sealed batteries
- Heavy duty Aluminium housing



Jumper Leads

- Antizap booster cables are guaranteed to protect against voltage spikes
- Durable high grade insulation material resists acid, oil and chemicals
- Crimped, fully insulated 400 Amp clamps
- High Speed surge protection



Part No.	Length mm	Cable Size	AMP Capacity	PRICE
MA55100AZ	2.4	6B & s / 15mm ²	400	\$45.95
MA354AZ	4	2B & s / 35mm ²	750	\$168.95
MA504AZ	4	0B & s / 50mm ²	900	\$208.95

\$895.95

12/24V Heavy Duty Jump Starter MA3400

- Dead start function
- Built in safety monitoring
- Heavy duty cable and fully insulated clamps
- Ultra high performance sealed AGM battery
- Includes 3 stage, 2 amp charger to ensure optimum battery life



\$975.95

Roadside Assist Jump Pack RA3800

- 12/24V 3800 AMP
- 1000CCA @ 12V & 500CCA @ 24V
- Heavy duty case



NEW PRODUCT

\$32.95

Fused Battery Accessory Terminal MA17PBL1

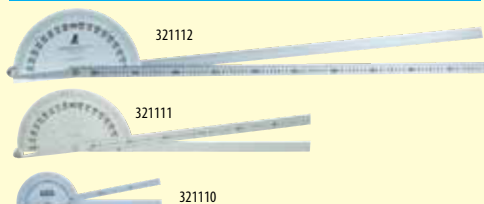
- Protect accessories from current surges
- Installed correctly, protects against short circuit
- 1 x 400A fused connection point
- 2 x 30A fused connection points
- Positive polarity



EOFY TAX TIME SAVINGS

AVAILABLE 1 MAY - 31 JULY 2022 . ALL PRICES INCLUDE GST

NEW PRODUCT



FAMOUS
TOLEDO
EXCELLENCE BY DESIGN

Protractors Double Blade 1800

- Stainless steel double blade etched with bold, easy to read graduations
- Essential measuring tool for industrial, automotive, manufacturing, engineering and aerospace work
- Features convenient centre lock nut to secure measurement
- Double blade maintains stability and firmly contours shape at any angle
- Made in Japan

Part No.	Size	Thickness	Angle Pitch	Length	PRICE
321110	210mm	2.0mm	0.50	385mm	\$398.95
321111	320mm	2.0mm	0.50	650mm	\$681.95
321112	320mm	2.0mm	0.50	1050mm	\$832.95

\$309.95

FAMOUS
TOLEDO
EXCELLENCE BY DESIGN

Universal Bearing Cup Installer 321095 440mm

- Easy-to-use, adjustable tool designed to install wheel bearing cups on a wide range of axles
- Adjust the jaws and secure into cup internal diameter. With the new cup mounted on the tool, insert into the bore and strike end of handle to secure
- Suitable for axles from 11,000 to 50,000lb. capacity
- Range: 92-165mm

\$60.95

FAMOUS
TOLEDO
EXCELLENCE BY DESIGN

Inner Tie Rod Tool Multi-Purpose 311290

- Replaces inner tie rods without the need to remove the steering rack
- Ideal tool for all steering service and repair work
- Unique design prevents damage to steering components
- Operating capacity: 33-42mm



\$239.95

FAMOUS
TOLEDO
EXCELLENCE BY DESIGN

Ball Joint C Frame Press Kit 311019 10 Piece

- For the removal and installation of ball joints including brake anchor pins and tail shaft U joints
- Universal tool applicable for AWD, FWD & RWD passenger and light commercial vehicles
- Includes various sleeves and adaptors for pressing or to draw bushes
- Max load: 4 tonnes



\$757.95

FAMOUS
TOLEDO
EXCELLENCE BY DESIGN

Universal Press Support Tool 311021

- For safe and easy shop press work
- Press plate 200 x 240 x 40mm, swivel plate and adjustable anvil bolts
- Made in Germany



\$43.95

FAMOUS
TOLEDO
EXCELLENCE BY DESIGN

High Leverage Trim Tool Set 313320 2 Piece

- Designed for levering where extra lift is required
- Rubber pivot provides high leverage without damaging surface
- Applicable for automotive and industrial applications
- Minimise scuffing on delicate surfaces
- Overall: 226mm and 250mm



\$25.95

Trim & Clip Remover Set 313030 2 Piece

- Damage free removal of trim and clips
- Fully hardened specialty steel with ergonomic acetate handle
- 5 - 7mm and 6 - 9mm



\$35.95

FAMOUS
TOLEDO
EXCELLENCE BY DESIGN

Panel Wedge Trim Removal Set 313321 2 Piece 290mm & 165mm

- Durable non-marring panel wedge set
- Suitable for removing interior and exterior trims, moulds and badges etc.
- Wedge ends suitable for striking with a mallet when extra force is required
- Includes one version with ergonomic non slip handle
- Blade width: 72mm (3")



\$797.95

FAMOUS
TOLEDO
EXCELLENCE BY DESIGN

Body Repair Kit 313029 Hydraulic 10 Tonne

- Heavy duty professional kit features 15 different quick connect hydraulic attachments for body and frame work
- Supplied with 10 tonne hydraulic ram and extension tubes
- Comprehensive multi-purpose kit makes light work of straightening, bending, pressing or spreading steel
- Supplied in heavy duty blow mould case with castor wheels for easy portability



\$36.95

FAMOUS
TOLEDO
EXCELLENCE BY DESIGN

Trim & Clip Remover Set 313311 5 Piece

- Special five piece set designed to remove, manoeuvre and manipulate interior trims without damage



\$18.95

FAMOUS
TOLEDO
EXCELLENCE BY DESIGN

Extreme Edge Tool Kit 313312 230mm 5 Piece

- For removing sealant, gasket and silicone
- Suitable for push or pull motion in confined space
- Manufactured from heavy duty nylon



BOLTS GALORE



Carrum Downs

59 Lathams Rd
03 9770 8400
sales@boltsgalore.com.au

Pakenham

5 Southeast Blvd
03 5941 9000
pakenham@boltsgalore.com.au

0172-22 Prices valid 1 May to 31 July 2022. Prices include GST. Please refer to the relevant Tridon catalogues for more comprehensive product information. As participating stores are independent businesses, they reserve the right to set their own selling prices. Pricing throughout this publication is the recommended trade price and may vary from store to store. Every effort has been made to ensure stocks are available at the time of printing. Should any item not be in stock on placement of orders, stores will endeavour to procure those published items. Product images are for illustration purposes only. Produced by Tridon Australia Pty Ltd ACN 001 398 698 ABN 90 001 398 698