



STAINLESS STEEL PRODUCTS

7



Stainless Steel is a great material for use in corrosive environments. Beaver has assembled an extensive range of Stainless Steel Products to meet your working environment.



Contents

STAINLESS STEEL PRODUCTS

BEAVER STAINLESS PRODUCT INFORMATION	4
BEAVER GRADE 50 CHAIN AND COMPONENTS	6
BEAVER STAINLESS STEEL WIRE	9
BEAVER STAINLESS STEEL FITTINGS	15
PRODUCT REFERENCE GUIDE	28



BEAVER STAINLESS PRODUCT INFORMATION

Beaver Stainless Steel Wire Ropes and Fittings

Beaver Stainless Steel Wire Ropes and Fittings are manufactured from both 304 and 316 stainless steel. We source our stainless steel worldwide and pride ourselves on our quality and consistency. Stainless steel is mainly used in corrosive applications, in particular marine and waste management. Stainless steel's other applications include decorative balustrading and outdoor use.

304 and 316 Grade Stainless Steel

- 304 Grade stainless steel is considered to be a standard grade. It has excellent resistance to corrosion, however has some limitations in higher corrosive environments.
- 316 Grade stainless steel, also known as marine grade stainless steel. It has a higher corrosion resistance than 304 grade stainless steel and is better in harsher corrosive applications, such as salt water environments. It is suitable for food and pharmaceutical processing applications and is commonly used on boats, and in any coastal environment.

There are three common constructions of stainless steel wire rope used in rigging applications.

7 x 19

The most common and versatile construction of stainless steel wire rope is 7 x 19. It consists of 7 strands each with 19 wires and is the most flexible and the easiest construction to work with. 7 x 19 can be used in either fixed rigging or for limited working rope applications such as on a boat winch.

7 x 7

A wire that is not as flexible as 7 x 19, is 7x7 wire rope, it consists of 7 strands each with 7 wires. 7x7 is an excellent choice for fixed rigging applications such as balustrading and safety barrier rail.

1 x 19

A single strand wire is 1x19, this consists of a single strand with 19 wires. It is very stiff and is suitable for fixed "straight line" rigging only such as mast stays, guy ropes and structural applications.

Beaver Grade 50 Stainless Steel Lifting Chain

Beaver Grade 50 Stainless Steel Lifting Chain is manufactured from Grade 316 stainless steel and is tested in accordance with Australian Standard AS 4797. It's high corrosive properties make it ideal for lifting in environments such as water treatment plants, waste management and food processing facilities.

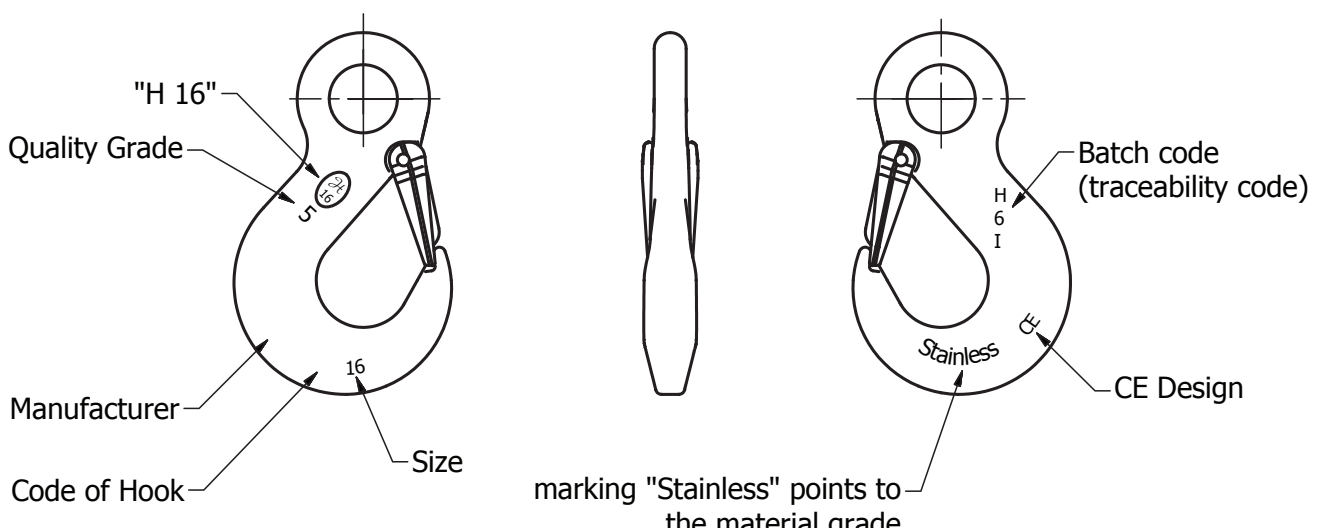
- Beaver Grade 50 Chain carries the mark "PWG5", stamped on every link along its entire length for easy identification

Beaver Grade 50 Stainless Steel Lifting Components

Beaver Grade 50 Stainless Steel Lifting Components are manufactured from Grade 316 stainless steel and is tested in accordance with Australian Standard AS 4797. It's high corrosive properties make it ideal for lifting in environments such as water treatment plants, waste management and food processing facilities.

- Beaver Grade components – see image 4.1

Image 4.1 Grade 50 Component markings

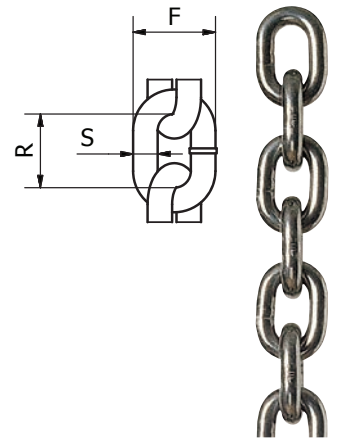


BEAVER GRADE 50 CHAIN AND COMPONENTS

Beaver Grade 50 Stainless Steel Lifting Chain G316

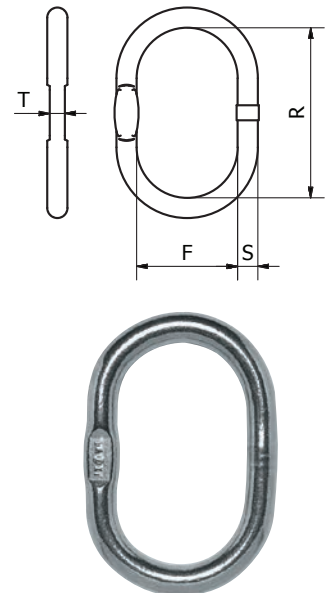
Safety Factor 4:1 to AS 4797

Code	W.L.L kg	Size mm	S mm	R mm	F mm	Finish	Weight kg/m	UOM	Metres per 100 kg
WOX5	500	5	5	16	17.5	Stainless Steel	0.56	Metre	178
WOX7	1000	7	7	21	23.53	Stainless Steel	1.1	Metre	90
WOX10	2000	10	10	30	33.5	Stainless Steel	2.2	Metre	45
WOX13	3200	13	13	39	43.5	Stainless Steel	3.8	Metre	26



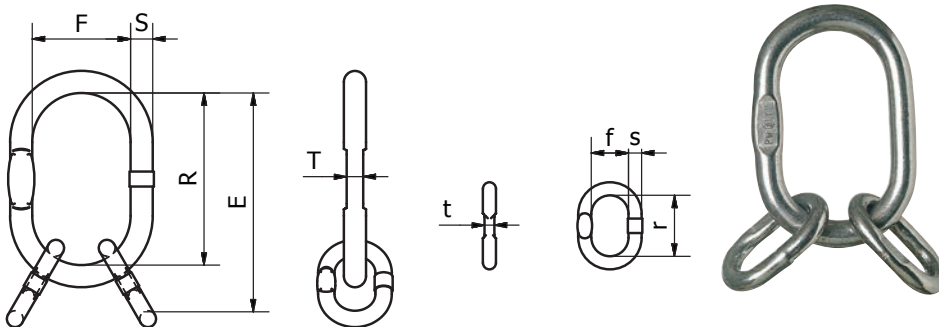
Beaver Stainless Steel Master Link Grade 50 G316

Code	Chain Size mm		W.L.L kg	S mm	R mm	F mm	T mm	Approx Weight (kg)	UOM	Pack Qty
	1 Leg	2 Leg								
AWI10	5	5	700	10	80	50	-	0.14	Each	20
AWI13	7	-	1050	13	110	60	10	0.34	Each	20
AWI16	-	7	1400	16.5	110	60	14	0.53	Each	20
AWI18	10	-	2000	18.5	135	75	14	0.92	Each	20
AWI22	13	10	3200	23	160	90	17	1.6	Each	5
AWI26	16	13	5000	27	180	100	20	2.46	Each	5
AWI32	-	16	7100	33	200	110	26	4.14	Each	5



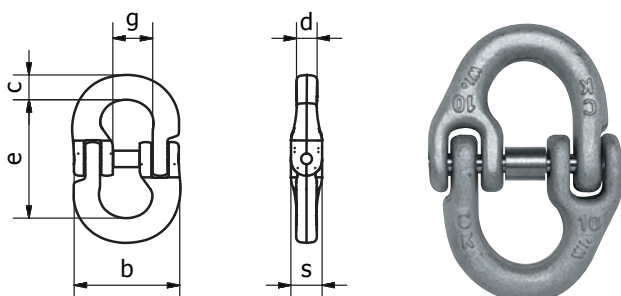
Beaver Grade 50 Stainless Steel Multi Link Assembly G316

Code	Chain Size mm	W.L.L kg	S mm	E mm	R mm	F mm	T mm	s mm	r mm	f mm	t mm	Approx Weight (kg)	UOM	Pack Qty
VWI5	5	1050	13	154	110	60	10	10	44	20	-	0.52	Each	10
VWI7	7	3200	23	230	160	90	17	16	70	34	14	2.32	Each	10
VWI10	10	5000	27	265	180	100	20	20	85	40	-	3.68	Each	10
VWI13	13	7100	33	315	200	110	26	23	115	50	17	6.46	Each	5
VWI16	16	10500	36	400	260	140	29	27	140	65	20	10.06	Each	5



Beaver Stainless Steel Connecting Link Grade 50 G316

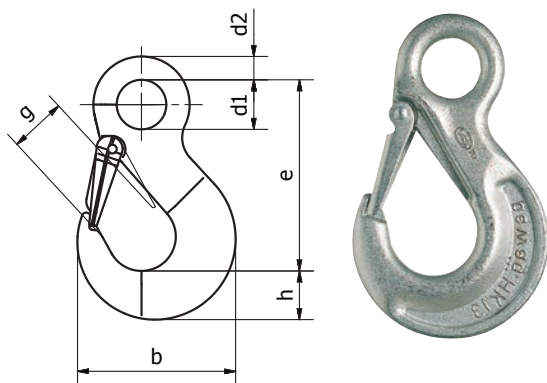
Code	Chain Size mm	W.L.L kg	e mm	c mm	b mm	g mm	s mm	d mm	Approx Weight (kg)	UOM	Pack Qty	Replacement Pin
CWI5	5	500	36	7	34.4	12.7	9.5	7	0.05	Each	50	CBHWI5
CWI7	7	1000	54	9	50.8	16.6	13	9	0.12	Each	50	CBHWI7
CWI10	10	2000	73	13	69.8	24.6	18	13	0.33	Each	50	CBHWI10
CWI13	13	3200	92	17	85.4	28.6	23	17	0.7	Each	20	CBHWI13
CWI16	16	5000	104	21	105.3	36.5	28	21	1.22	Each	20	CBHWI16



BEAVER GRADE 50 CHAIN AND COMPONENTS (CONT'D)

Beaver Stainless Steel Eye Sling Hook c/w Safety Latch Grade 50 G316

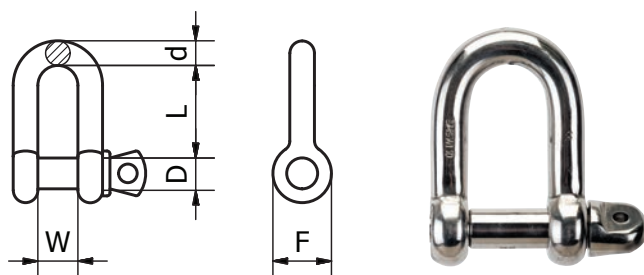
Code	Chain Size mm	W.L.L kg	e mm	h mm	d1 mm	d2 mm	b mm	g mm	Approx Weight (kg)	UOM	Pack Qty	Replacement Pin
HSWI5	5	500	80	20	21	8	66	22	0.25	Each	1	SFGWI5
HSWI7	7	1000	104	28	24	11	90	29	0.6	Each	1	SFGWI7
HSWI10	10	2000	125	33	31	14	108	35	1.2	Each	1	SFGWI10
HSWI13	13	3200	155	43	39	17	134	43	2.1	Each	1	SFGWI13
HSWI16	16	4500	175	47.4	47	22	152.5	48	3	Each	1	SFGWI16



Beaver- Grade 50 Screw Pin Shackles

Chain Dee Type

Code	Size mm	W.L.L kg	Type	Shape	Closing Method	DIA d	D mm	W mm	L mm	F mm	Approx Weight (kg)	UOM	Pack Qty
SMSWI4/5	8x9	500	Grade 50	Dee	Screw Pin	8	9	17	22	18	0.07	Each	30
SMSWI6/7/8	12x13	1250	Grade 50	Dee	Screw Pin	12	13	25	40	25	0.22	Each	30
SMSWI10	16x17	2000	Grade 50	Dee	Screw Pin	16	17	32	60	32	0.52	Each	30
SMSWI13	13x16	3200	Grade 50	Dee	Screw Pin	13	16	25	50	32	0.35	Each	10
SMSWI16	16x19	5000	Grade 50	Dee	Screw Pin	16	19	32	64	38	0.55	Each	10

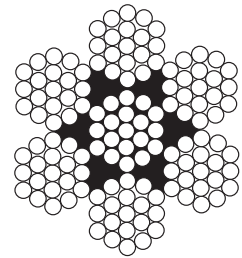


BEAVER STAINLESS STEEL WIRE

Beaver 7x19 G316 Stainless Steel RHOL Wire Rope

Code	Dia mm	Construction	Grade	Finish	Lay	MBF kN	Approx Mass Kg/100m	UOM	Metre Per Reel
720016	1.6	7x19	316	Stainless Steel	RHOL	1.9	1.03	Metre	305
720025	2.4	7x19	316	Stainless Steel	RHOL	3.64	2.38	Metre	305
720030	3.2	7x19	316	Stainless Steel	RHOL	5.24	4.18	Metre	305
720040	4	7x19	316	Stainless Steel	RHOL	8.21	6.71	Metre	305
720050	5	7x19	316	Stainless Steel	RHOL	11.08	9.5	Metre	305
720060	6.4	7x19	316	Stainless Steel	RHOL	21.01	17	Metre	305
720080	8	7x19	316	Stainless Steel	RHOL	32.85	26.9	Metre	305

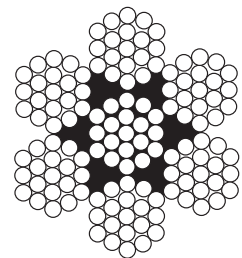
MBF (Minimum Breaking Force)



Beaver 7x19 G304 Stainless Steel RHOL

Code	Dia mm	Construction	Grade	Finish	Lay	MBF kN	Approx Mass Kg/100m	UOM	Metre Per Reel
703016	1.6	7x19	304	Stainless Steel	RHOL	1.49	1.2	Metre	305
703020	2	7x19	304	Stainless Steel	RHOL	2.89	1.61	Metre	305
703025	2.5	7x19	304	Stainless Steel	RHOL	4.4	2.44	Metre	305
703030	3	7x19	304	Stainless Steel	RHOL	6.12	3.52	Metre	305
703040	4	7x19	304	Stainless Steel	RHOL	9.27	6.71	Metre	305
703050	5	7x19	304	Stainless Steel	RHOL	17.84	9.81	Metre	305
703055	5.5	7x19	304	Stainless Steel	RHOL	21.5	12.25	Metre	305
703060	6	7x19	304	Stainless Steel	RHOL	25.51	14.21	Metre	305
703080	8	7x19	304	Stainless Steel	RHOL	37.07	26.9	Metre	305
703100	10	7x19	304	Stainless Steel	RHOL	50.46	39.24	Metre	305
703112	12	7x19	304	Stainless Steel	RHOL	90.5	56.44	Metre	305
703116	16	7x19	304	Stainless Steel	RHOL	146	100.4	Metre	305

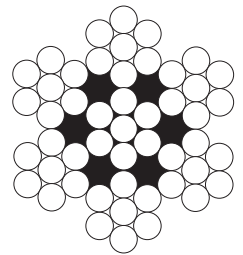
MBF (Minimum Breaking Force)



BEAVER STAINLESS STEEL WIRE (CONT'D)

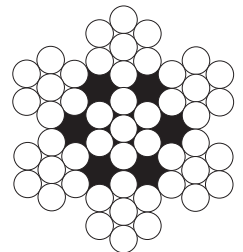
Beaver 7x7 G316 Stainless Steel RHOL

Code	Dia mm	Construction	Grade	Finish	Lay	MBF kN	Approx Mass Kg/100m	UOM	Metre Per Reel
702116	1.6	7x7	316	Stainless Steel	RHOL	1.89	1.12	Metre	305
702120	2	7x7	316	Stainless Steel	RHOL	2.58	1.62	Metre	305
702125	2.4	7x7	316	Stainless Steel	RHOL	3.64	2.38	Metre	305
702130	3.2	7x7	316	Stainless Steel	RHOL	6.96	4.32	Metre	305
702140	4	7x7	316	Stainless Steel	RHOL	9.5	6.48	Metre	305
702150	4.8	7x7	316	Stainless Steel	RHOL	14.64	9.84	Metre	305
702160	6.4	7x7	316	Stainless Steel	RHOL	25.32	16.37	Metre	305
702180	8	7x7	316	Stainless Steel	RHOL	35.6	25.96	Metre	305



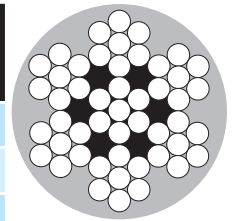
Beaver 7x7 G304 Stainless Steel RHOL

Code	Dia mm	Construction	Grade	Finish	Lay	MBF kN	Approx Mass Kg/100m	UOM	Metre Per Reel
702012	1.2	7x7	304	Stainless Steel	RHOL	0.9	0.6	Metre	305
702015	1.5	7x7	304	Stainless Steel	RHOL	1.87	0.99	Metre	305
702016	1.6	7x7	304	Stainless Steel	RHOL	1.61	1.07	Metre	305
702020	2	7x7	304	Stainless Steel	RHOL	2.49	1.68	Metre	305
702025	2.5	7x7	304	Stainless Steel	RHOL	5.56	2.53	Metre	305
702030	3	7x7	304	Stainless Steel	RHOL	6.87	3.65	Metre	305
702040	4	7x7	304	Stainless Steel	RHOL	10.01	6.73	Metre	305
702050	5	7x7	304	Stainless Steel	RHOL	12.3	10.12	Metre	305
702060	6	7x7	304	Stainless Steel	RHOL	23.17	14.75	Metre	305



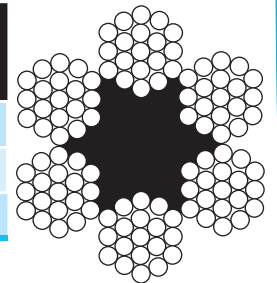
Beaver 7x7 PVC G304 Stainless Steel RHOL PVC Coated Wire Rope

Code	Dia mm	Construction	Grade	Finish	PVC	Lay	MBF kN	Approx Mass Kg/100m	UOM	Metre Per Reel
705030	3	7x7	304	Stainless Steel	White	RHOL	10.01	6.6	Metre	305
705040	4	7x7	304	Stainless Steel	White	RHOL	10.67	7.5	Metre	305
705050	5	7x7	304	Stainless Steel	White	RHOL	16.44	11.65	Metre	305



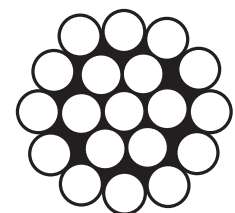
Beaver 6x19 Fibre Core G304 Stainless Steel RHOL Wire Rope

Code	Dia mm	Construction	Grade	Finish	Lay	MBF kN	Approx Mass Kg/100m	UOM	Metre Per Reel
704008	8	6x19	304	Stainless Steel	RHOL	27.7	23	Metre	305
704009	9	6x19	304	Stainless Steel	RHOL	35.1	28.85	Metre	305
704010	10	6x19	304	Stainless Steel	RHOL	43.36	35.64	Metre	305



Beaver 1x19 G316 Stainless Steel RHOL Wire Rope

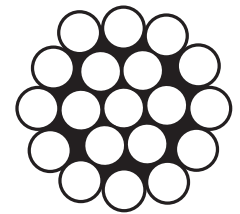
Code	Dia mm	Construction	Grade	Finish	Lay	MBF kN	Approx Mass Kg/100m	UOM	Metre Per Reel
701115	1.6	1x19	316	Stainless Steel	RHOL	1.98	1.3	Metre	305
701120	2	1x19	316	Stainless Steel	RHOL	3.17	2	Metre	305
701130	3.2	1x19	316	Stainless Steel	RHOL	8.34	5.08	Metre	305
701140	4	1x19	316	Stainless Steel	RHOL	13.05	8.17	Metre	305
701150	5	1x19	316	Stainless Steel	RHOL	18.59	11.57	Metre	305
701180	8	1x19	316	Stainless Steel	RHOL	52.01	32.8	Metre	305



BEAVER STAINLESS STEEL WIRE (CONT'D)

Beaver 1x19 G304 Stainless Steel RHOL Wire Rope

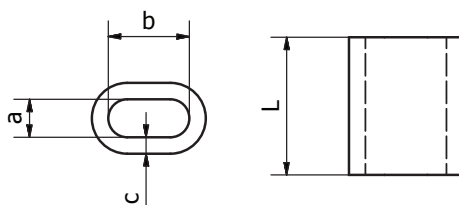
Code	Dia mm	Construction	Grade	Finish	Lay	MBF kN	Approx Mass Kg/100m	UOM	Metre Per Reel
701015	1.5	1x19	304	Stainless Steel	RHOL	1.78	1.14	Metre	305
701020	2	1x19	304	Stainless Steel	RHOL	3.56	2	Metre	305
701025	2.5	1x19	304	Stainless Steel	RHOL	5.5	3.09	Metre	305
701030	3	1x19	304	Stainless Steel	RHOL	7.4	4.59	Metre	305
701040	4	1x19	304	Stainless Steel	RHOL	13.1	8.17	Metre	305
701050	5	1x19	304	Stainless Steel	RHOL	20.58	12.77	Metre	305



Beaver Copper Ferrules to DIN 3093

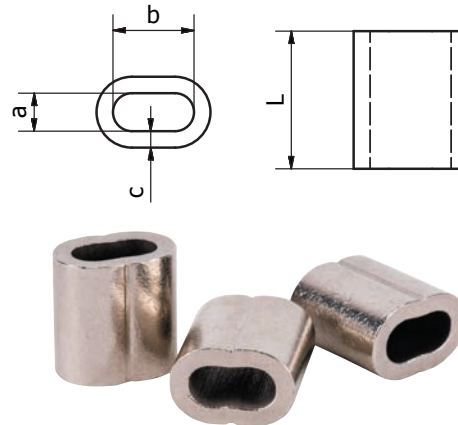
Code	Size mm	a mm	b mm	c mm	L mm	UOM	Pack Qty
617402	2	2.2	4.4	0.90	7	Each	5000
617402A	2.5	2.7	5.4	1.05	9	Each	5000
617403	3	3.3	6.6	1.25	11	Each	4000
617403A	3.5	3.8	7.6	1.5	13	Each	3000
617404	4	4.4	8.8	1.7	14	Each	1000
617404A	4.5	4.9	9.8	1.9	16	Each	1000
617405	5	5.5	11.0	2.1	18	Each	1000
617406	6	6.6	13.2	2.5	21	Each	1000
617406A	6.5	7.2	14.4	2.7	23	Each	1000
617407	7	7.8	15.6	2.9	25	Each	500

Code	Size mm	a mm	b mm	c mm	L mm	UOM	Pack Qty
617408	8	8.8	17.6	3.3	28	Each	100
617409	9	9.9	19.8	3.7	32	Each	100
617410	10	10.9	21.8	4.1	35	Each	100
617411	11	12.1	24.2	4.5	39	Each	100
617412	12	13.2	26.4	4.9	42	Each	100
617413	13	14.2	28.4	5.4	46	Each	100
617414	14	15.3	30.6	5.8	49	Each	100
617416	16	17.5	35.0	6.7	56	Each	50
617418	18	19.6	39.2	7.6	63	Each	25
617420	20	21.7	43.4	8.4	70	Each	20



Beaver Nickle Plated Ferrules to DIN 3093

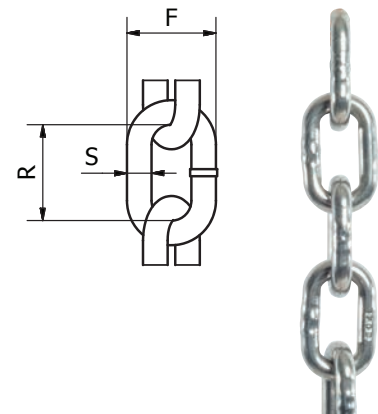
Code	Size mm	a mm	b mm	c mm	L mm	UOM	Pack Qty
617416NP	1.6	1.8	3.6	1.05	6	Each	100
617402NP	2	2.2	4.4	0.90	7	Each	100
617402ANP	2.5	2.7	5.4	1.05	9	Each	100
617403NP	3	3.3	6.6	1.25	11	Each	100
617404NP	4	4.4	8.8	1.7	14	Each	100
617405NP	5	5.5	11.0	2.1	18	Each	100
617406NP	6	6.6	13.2	2.5	21	Each	100



Beaver G304 Stainless Steel Chain Short Link

Short Link – Sizes 4-10mm

Code	Size mm	S mm	R mm	F mm	Weight Per Mtr	Finish	UOM	Metres Per 100 kg
147104	4	4	18.6	16	0.32	Polished	Metre	384.6
147106	6	6	26	23.5	0.72	Polished	Metre	137.3
147108	8	8	32.2	29.5	1.28	Polished	Metre	80
147110	10	10	39	36.2	2.06	Polished	Metre	49.6



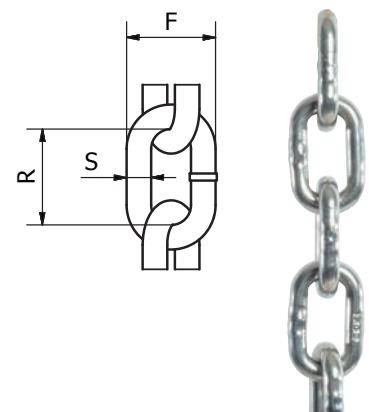
Metres per drum are subject to + or - 10% on actual metreage

NOT TO BE USED FOR LIFTING

Beaver G316 Stainless Steel Chain Short Link

Short Link – Sizes 2-13mm

Code	Size mm	S mm	R mm	F mm	Weight Per Mtr	Finish	UOM	Metres Per 100 kg
146102	2	2	14.8	8.25	0.08	Polished	Metre	1666.6
146104	4	4	18.6	16	0.32	Polished	Metre	384.6
146106	6	6	26	23.5	0.72	Polished	Metre	137.3
146108	8	8	32.2	29.5	1.28	Polished	Metre	80
146110	10	10	39	36.2	2.06	Polished	Metre	49.6
146113	13	13	49.1	46.1	3.36	Polished	Metre	28.7



Metres per drum are subject to + or - 10% on actual metreage

NOT TO BE USED FOR LIFTING

BEAVER STAINLESS STEEL CHAIN (CONT'D)

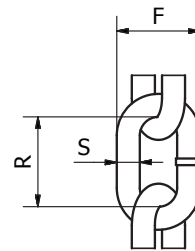
Beaver Grade 316 Stainless Steel Chain

Short Link – Sizes 4-10mm

Code	Size mm	S mm	R mm	F mm	Weight Per Mtr	Finish	UOM	Metres Per 100 kg
146204	4	4	24	13	0.32	Polished	Metre	312.5
146206	6	6	30.5	19.2	0.8	Polished	Metre	133.3
146208	8	8	40	25.6	1.4	Polished	Metre	74.8

Metres per drum are subject to + or - 10% on actual metreage

NOT TO BE USED FOR LIFTING



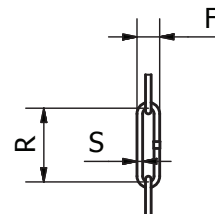
Beaver Grade 316 Stainless Steel Chain

Long Link

Code	Size mm	S mm	R mm	F mm	Weight Per Mtr	Finish	UOM	Metres Per 100 kg
146102L	2	2	26	8	0.061	Polished	Metre	1639

Metres per drum are subject to + or - 10% on actual metreage

NOT TO BE USED FOR LIFTING

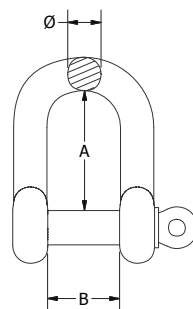


BEAVER STAINLESS STEEL FITTINGS

Beaver G316 Stainless Steel Standard Dee Shackles

Code	Grade	Shape	Closing Method	Dia Ø mm	A mm	B mm	Weight Kg	UOM	Pack Qty
615404	316	Dee	Screw	4	15	8.3	0.007	Each	1000
615405	316	Dee	Screw	5	17	11.3	0.013	Each	500
615406	316	Dee	Screw	6	22	12.3	0.021	Each	400
615408	316	Dee	Screw	8	28.6	17	0.052	Each	120
615410	316	Dee	Screw	10	35	20	0.11	Each	70
615412	316	Dee	Screw	12	45.5	25	0.19	Each	40
615416	316	Dee	Screw	16	56	32	0.37	Each	15
615419	316	Dee	Screw	19	67	38.5	0.72	Each	10

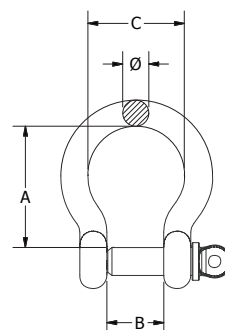
NOT TO BE USED FOR LIFTING



Beaver G316 Stainless Steel Standard Bow Shackles

Code	Grade	Shape	Closing Method	Dia Ø mm	A mm	B mm	C mm	Weight Kg	UOM	Pack Qty
615504	316	Bow	Screw	4	20	8	13	0.01	Each	1000
615505	316	Bow	Screw	5	23	10.8	17	0.02	Each	500
615506	316	Bow	Screw	6	31	13	21	0.03	Each	400
615508	316	Bow	Screw	8	36.5	17.5	28	0.06	Each	120
615510	316	Bow	Screw	10	44	21.5	35.5	0.11	Each	70
615512	316	Bow	Screw	12	52.5	27	41	0.22	Each	40
615516	316	Bow	Screw	16	73.5	32	54	0.49	Each	15

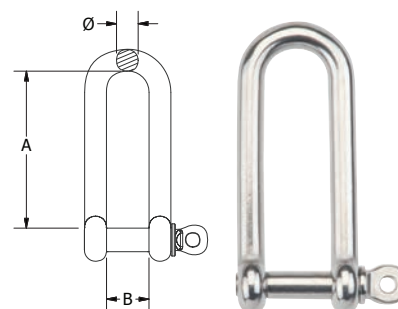
NOT TO BE USED FOR LIFTING



Beaver G316 Stainless Steel Long Dee Shackles

Code	Grade	Shape	Closing Method	Dia Ø mm	A mm	B mm	Weight Kg	UOM	Pack Qty
611404	316	Dee	Screw	4	31.3	7.5	0.01	Each	300
611406	316	Dee	Screw	6	45.3	13.5	0.03	Each	200
611408	316	Dee	Screw	8	60	16.5	0.07	Each	100
611410	316	Dee	Screw	10	75.5	20.8	0.16	Each	50
611412	316	Dee	Screw	12	90	25	0.27	Each	25

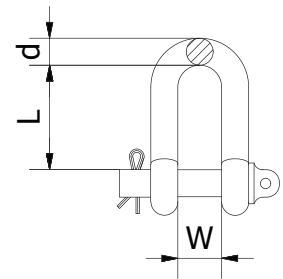
NOT TO BE USED FOR LIFTING



BEAVER STAINLESS STEEL FITTINGS (CONT'D)

Beaver G316 Stainless Steel Dee Shackle w/- Captive Pin

Code	Grade	Shape	Closing Method	d mm	L mm	W mm	Weight Kg	UOM	Pack Qty
615305	316	Dee	Screw	5	17.8	10.4	0.01	Each	500
615306	316	Dee	Screw	6	22.5	13	0.02	Each	400
615308	316	Dee	Screw	8	24.5	17.3	0.05	Each	100
615310	316	Dee	Screw	10	35.6	28.6	0.09	Each	60
615312	316	Dee	Screw	12	42.4	25	0.18	Each	40

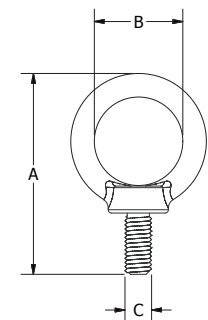


NOT TO BE USED FOR LIFTING



Beaver G316 Stainless Steel Eye Bolts

Code	Grade	Size mm	A mm	B mm	C mm	Weight Kg	UOM	Pack Qty
612406	316	6	37.4	16.8	M6	0.01	Each	300
612408	316	8	47	20.6	M8	0.02	Each	200
612410	316	10	60.7	25.6	M10	0.05	Each	100
612412	316	12	72.3	29.7	M12	0.1	Each	50
612416	316	16	86	35	M16	0.15	Each	20



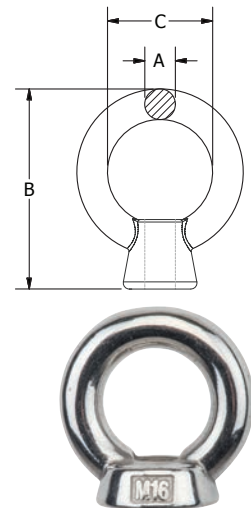
NOT TO BE USED FOR LIFTING



Beaver G316 Stainless Steel Eye Nuts

Code	Grade	Size mm	A mm	B mm	C mm	Weight Kg	UOM	Pack Qty
612506	316	6	4.7	31.3	16.3	0.015	Each	200
612508	316	8	5	38.7	21	0.024	Each	200
612510	316	10	7	48.9	25.8	0.05	Each	100
612512	316	12	9.6	59.7	30.3	0.08	Each	50
612516	316	16	12	70.3	35.3	0.18	Each	50

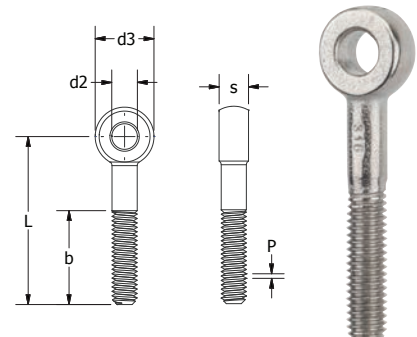
NOT TO BE USED FOR LIFTING



Beaver G316 Stainless Steel Eye Bolt DIN 444

Code	Grade	Size mm	S mm	p mm	d2 mm	d3 mm	L mm	b mm	Weight Kg	UOM	Pack Qty
612640	316	M6	9	1	6	14	40	18	0.01	Each	250
612860	316	M8	11	1.25	8	18	60	22	0.03	Each	250

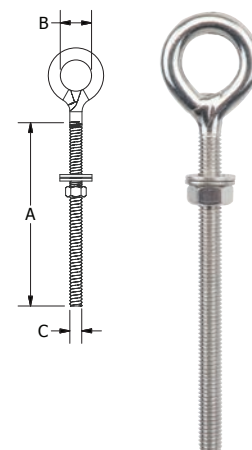
NOT TO BE USED FOR LIFTING



Beaver G304 Stainless Steel Eye Bolts with Nut & 2 Washers

Code	Grade	Size mm	A mm	B mm	C mm	Weight Kg	UOM	Pack Qty
618451	304	5 x 50	50	11	M5	0.01	Each	300
618461	304	6 x 40	40	13	M6	0.02	Each	200
618462	304	6 x 80	80	13	M6	0.03	Each	200
618463	304	6 x 55	55	13	M6	0.02	Each	200
618464	304	6 x 100	100	13	M6	0.03	Each	200
618481	304	8 x 80	80	17	M8	0.06	Each	120
618482	304	8 x 100	100	17	M8	0.06	Each	100
618483	304	8 x 120	120	17	M8	0.07	Each	100
618493	304	10 x 120	120	21	M10	0.12	Each	50
618496	304	12 x 120	120	25	M12	0.17	Each	25

NOT TO BE USED FOR LIFTING

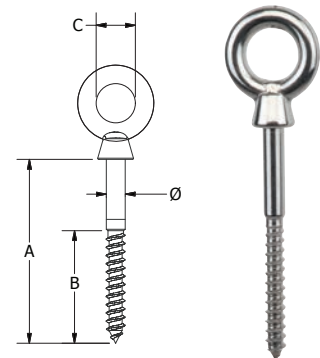


BEAVER STAINLESS STEEL FITTINGS (CONT'D)

Beaver G316 Stainless Steel Eye Bolts with Nut & 2 Washers

Code	Grade	Size mm	Dia Ø mm	A mm	B mm	C mm	Weight Kg	UOM	Pack Qty
618060	316	6x60	6	60	36	14	0.027	Each	250
618080	316	8x80	8	81	48	18.4	0.05	Each	200
618010	316	10x100	10	98	60	22	0.12	Each	50
618012	316	12x120	12	122.5	72	27.3	0.2	Each	20

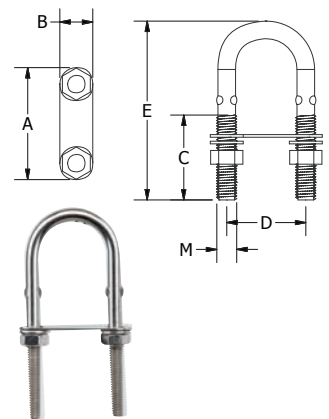
NOT TO BE USED FOR LIFTING



Beaver G304 Stainless Steel Eye Bolts with Nut & Washers

Code	Grade	Size mm	A mm	B mm	C mm	D mm	E mm	M mm	Weight Kg	UOM	Pack Qty
619005	304	5x80	50	13	39	35	80	M5	0.028	Each	100
619006	304	6x90	50	15	40	35	90	M6	0.04	Each	100
619008	304	8X80	50	15	40	35	80	M8	0.07	Each	80
619008A	304	8X100	50	15	50	35	101.3	M8	0.08	Each	50
619010	304	10x130	70.6	20	55	50	130	M10	0.18	Each	50
619012	304	12x150	83	23	73.6	58.6	150	M12	0.3	Each	50

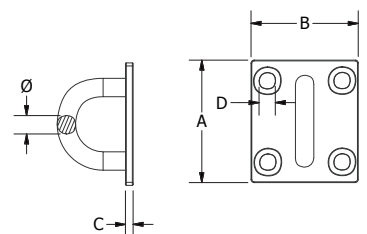
NOT TO BE USED FOR LIFTING



Beaver G304 Stainless Steel Square Pad Eye

Code	Grade	Size mm	Dia Ø mm	A mm	B mm	C mm	D mm	Weight Kg	UOM	Pack Qty
616205	304	5	4.1	35	30.6	2.4	5	0.01	Each	200
616206	304	6	5.3	40	40.8	2.5	6	0.03	Each	100
616208	304	8	5.6	50	45.5	3.5	8	0.06	Each	80

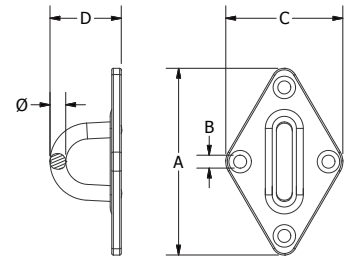
NOT TO BE USED FOR LIFTING



Beaver G304 Stainless Steel Diamond Pad Eye

Code	Grade	Dia Ø mm	A mm	B mm	C mm	D mm	Weight Kg	UOM	Pack Qty
618005	304	5	58.8	4	36.5	22.5	0.029	Each	250
618006	304	6	63.9	4.4	40	27	0.04	Each	250
618008	304	8	79.9	5.5	48.8	33	0.07	Each	250

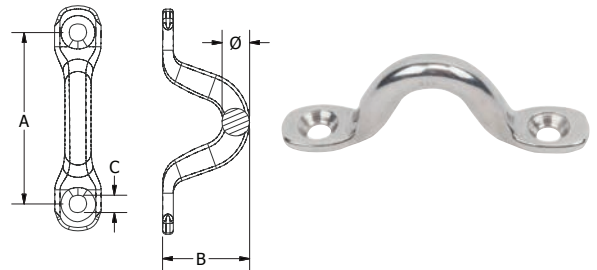
NOT TO BE USED FOR LIFTING



Beaver G304 Stainless Steel Wire Eye Saddles

Code	Grade	Dia Ø mm	A mm	B mm	C mm	Weight Kg	UOM	Pack Qty
617704	304	4	32	15.8	3.2	0.004	Each	1400
617705	304	5	40	18	4.3	0.007	Each	600
617706	304	6	44	22	5.3	0.013	Each	500
617708	304	8	51	23	5.2	0.025	Each	200

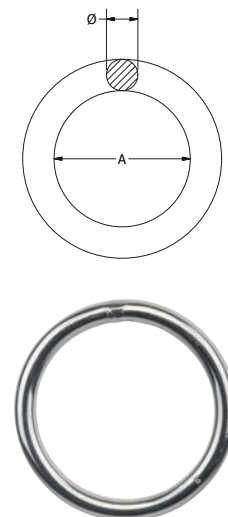
NOT TO BE USED FOR LIFTING



Beaver G304 Stainless Steel Wire Eye Saddles

Code	Grade	Dia Ø mm	A mm	Weight Kg	UOM	Pack Qty
616541	304	4	25	0.008	Each	300
616542	304	4	40	0.01	Each	250
616550	304	5	25	0.025	Each	200
616551	304	5	35	0.027	Each	100
616561	304	6	40	0.03	Each	100
616562	304	6	50	0.038	Each	100
616581	304	8	55	0.06	Each	50
616582	304	8	75	0.09	Each	50
616591	304	10	75	0.16	Each	50

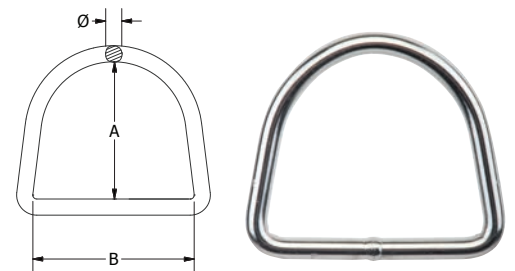
NOT TO BE USED FOR LIFTING



BEAVER STAINLESS STEEL FITTINGS (CONT'D)

Beaver G304 Stainless Steel Dee Rings

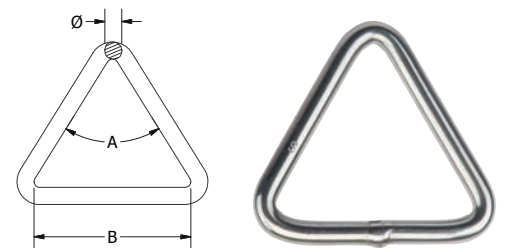
Code	Grade	Dia Ø mm	A mm	B mm	Weight Kg	UOM	Pack Qty
616541D	304	4	25	30	0.008	Each	600
616552D	304	5	40	40	0.025	Each	300
616562D	304	6	50	35	0.03	Each	100
616580D	304	8	50	70	0.069	Each	100



NOT TO BE USED FOR LIFTING

Beaver G304 Stainless Steel Triangle

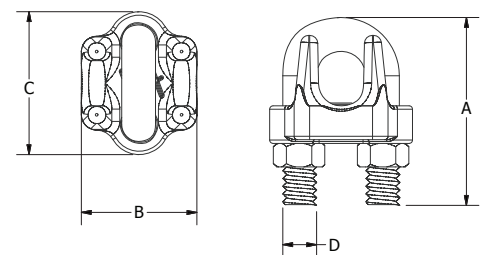
Code	Grade	Dia Ø mm	A mm	B mm	Weight Kg	UOM	Pack Qty
616562T	304	6	60	50.8	0.03	Each	200
616580T	304	8	60	50	0.06	Each	150



NOT TO BE USED FOR LIFTING

Beaver G316 Stainless Steel Wire Rope Grips

Code	Grade	Size mm	A mm	B mm	C mm	D mm	Weight Kg	UOM	Pack Qty
612202	316	2	18	13	15.3	M3	0.01	Each	800
612203	316	3	24.5	14.5	15.8	M4	0.015	Each	800
612204	316	4	24	18	18.5	M4	0.02	Each	500
612205	316	5	29	19.6	23	M5	0.022	Each	300
612206	316	6	31	20.5	26.3	M6	0.03	Each	200
612208	316	8	41	27	33.5	M8	0.08	Each	100
612210	316	10	52	33.8	42.7	M10	0.15	Each	50
612212	316	12	61	37.8	50	M12	0.23	Each	30
612214	316	14	67.5	42	50.6	M12	0.28	Each	25
612216	316	16	76	47	60	M14	0.41	Each	20

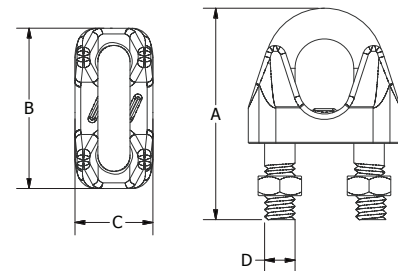


NOT TO BE USED FOR LIFTING

Beaver G316 Stainless Steel Wire Rope Grips (Light Duty)

Code	Grade	Size mm	A mm	B mm	C mm	D mm	Weight Kg	UOM	Pack Qty
612203L	316	3	21.2	17	10	M3	0.01	Each	400
612204L	316	4	24	21.3	11	M4	0.016	Each	300
612206L	316	6	31.8	27.5	15.8	M6	0.036	Each	100

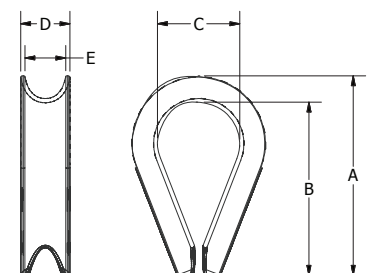
NOT TO BE USED FOR LIFTING



Beaver G316 Stainless Steel Wire Rope Thimbles

Code	Grade	Size mm	A mm	B mm	C mm	D mm	E mm	Weight Kg	UOM	Pack Qty
612302	316	2	20.6	18	7.5	4.5	3	0.005	Each	1000
612303	316	3	24.3	21	10	6	4.3	0.007	Each	800
612304	316	4	27.8	24.8	11	6.6	5.2	0.008	Each	500
612305	316	5	30.5	26	13	8.5	6.8	0.009	Each	400
612306	316	6	37	32.6	15.5	10	8.8	0.01	Each	250
612308	316	8	51.5	45.5	23	12.5	10	0.02	Each	130
612310	316	10	56.4	50	27	14.6	12	0.03	Each	50
612312	316	12	68	61	32.5	18	14.5	0.05	Each	30
612316	316	16	82.7	75	37.5	22	19	0.09	Each	25

NOT TO BE USED FOR LIFTING

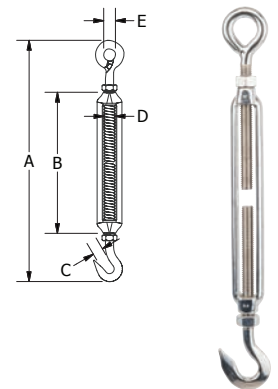


BEAVER STAINLESS STEEL FITTINGS (CONT'D)

Beaver G316 Stainless Steel Hook & Eye Turnbuckles with Lock Nuts

Code	Grade	Size mm	A mm	B mm	C mm	D mm	E mm	Weight Kg	UOM	Pack Qty
600404	316	4	110	61.5	9	M4	8	0.02	Each	300
600405	316	5	127.5	71	9.5	M5	10	0.05	Each	150
600406	316	6	163	90.5	9	M6	12	0.08	Each	90
600408	316	8	212	122	10.3	M8	14	0.15	Each	50
600410	316	10	259	151.5	12.5	M10	16	0.29	Each	20
600412	316	12	321	201	14	M12	18	0.59	Each	10

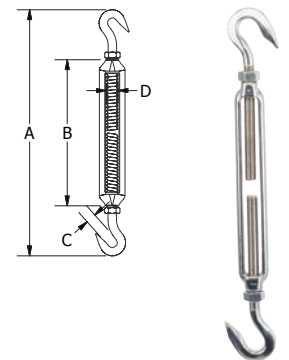
NOT TO BE USED FOR LIFTING



Beaver G316 Stainless Steel Hook & Hook Turnbuckles with Lock Nuts

Code	Grade	Size mm	A mm	B mm	C mm	D mm	Weight Kg	UOM	Pack Qty
600404H	316	4	116	61.5	9	M4	0.02	Each	300
600405H	316	5	130	71	9.5	M5	0.05	Each	150
600406H	316	6	167	90.5	8.5	M6	0.08	Each	90
600408H	316	8	214	122	10.3	M8	0.15	Each	50
600410H	316	10	265	151.5	12.5	M10	0.29	Each	20
600412H	316	12	320	201	15	M12	0.59	Each	10

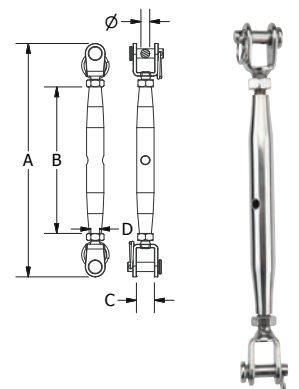
NOT TO BE USED FOR LIFTING



Beaver G316 Stainless Steel Jaw & Jaw Bottle Screw with Lock Nuts

Code	Grade	Size mm	Dia Ø mm	A mm	B mm	C mm	D mm	Weight Kg	UOM	Pack Qty
601505	316	5	5	138	81	10.3	M5	0.04	Each	80
601506	316	6	6	153	92	10.3	M6	0.07	Each	50
601508	316	8	8	188	112	11.2	M8	0.15	Each	50
601510	316	10	10	212	121	15	M10	0.28	Each	50
601512	316	12	12	266	150	17.5	M12	0.49	Each	30

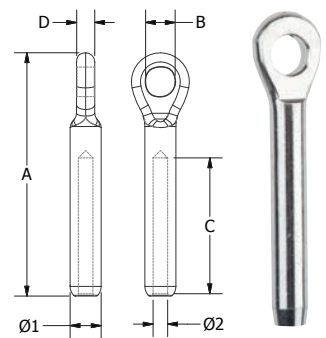
NOT TO BE USED FOR LIFTING



Beaver G316 Stainless Steel Swage Eye End Terminal

Code	Grade	Wire Dia Inches	Wire Dia mm	Dia Ø1 mm	Dia Ø2 mm	A mm	B mm	C mm	D mm	Weight Kg	UOM	Pack Qty
601803	316	1/8"	3.2	6.3	3.5	62.3	6.5	38.7	3.8	0.012	Each	500
601804	316	5/32"	4	7.5	4.3	77	8.5	45	4.9	0.023	Each	300
601805	316	3/16"	5	9	5.3	89	10.6	53.8	5.8	0.035	Each	200
601806	316	1/4"	6	12.5	6.3	106.7	13	63	7.8	0.085	Each	150

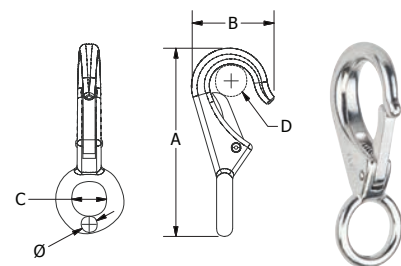
NOT TO BE USED FOR LIFTING



Beaver G316 Stainless Steel Rigid Eye Snap Hook

Code	Grade	Dia Ø mm	A mm	B mm	C mm	D mm	Weight Kg	UOM	Pack Qty
618810	316	3.8	55.8	23.5	12.2	8.8	0.02	Each	300
618815	316	4.5	72.8	29.6	16.7	8.8	0.037	Each	300

NOT TO BE USED FOR LIFTING

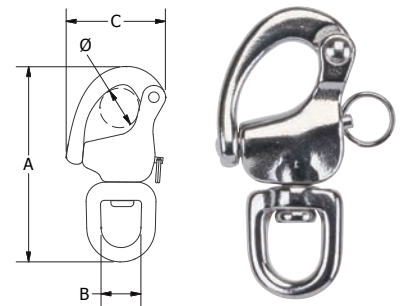


BEAVER STAINLESS STEEL FITTINGS (CONT'D)

Beaver G316 Stainless Steel Swivel Eye Snap Shackle

Code	Grade	Dia Ø mm	A mm	B mm	C mm	Weight Kg	UOM	Pack Qty
618512	316	12	71	13	33	0.06	Each	150
618516	316	16	86	15	42	0.11	Each	100
618522	316	22	122	20.6	58	0.4	Each	50

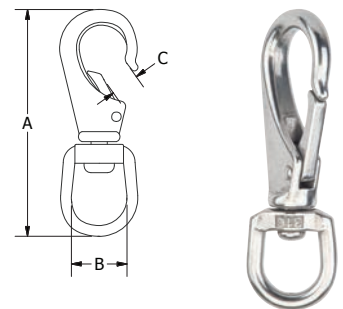
NOT TO BE USED FOR LIFTING



Beaver G316 Stainless Steel Swivel Eye Snap

Code	Grade	Size mm	A mm	B mm	C mm	Weight Kg	UOM	Pack Qty
616812	316	12	87.5	21.5	9.8	0.05	Each	100
616816	316	16	101	21.9	11.5	0.1	Each	50
616825	316	25	118.5	22.3	12	0.15	Each	10

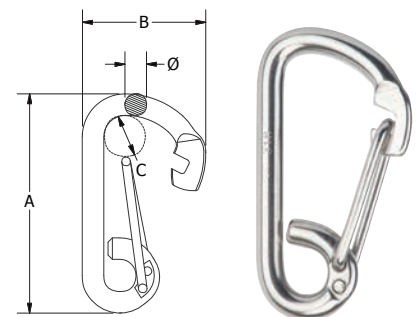
NOT TO BE USED FOR LIFTING



Beaver G316 Stainless Steel Angled Spring Hooks

Code	Grade	Dia Ø mm	A mm	B mm	C mm	Weight Kg	UOM	Pack Qty
616606	316	6	60	34.5	12.5	0.03	Each	500
616608	316	8	80	46	17	0.06	Each	100
616610	316	10	100	55	23.5	0.19	Each	50
616612	316	12	120	72	28	0.23	Each	50

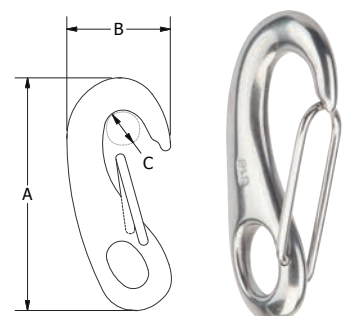
NOT TO BE USED FOR LIFTING



Beaver G316 Stainless Steel Spring Snap Hooks

Code	Grade	Dia mm	A mm	B mm	C mm	Weight Kg	UOM	Pack Qty
616705	316	5	49.5	25	8	0.02	Each	400
616707	316	7	68.8	31.5	12.5	0.04	Each	150
616710	316	10	97	47	20	0.12	Each	50

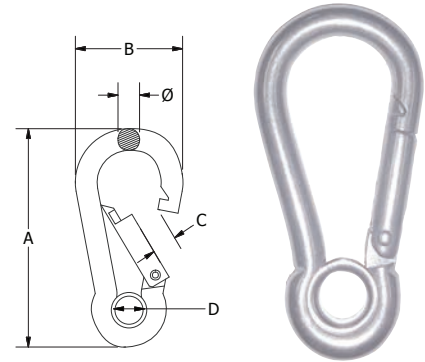
NOT TO BE USED FOR LIFTING



Beaver G316 Stainless Steel Carbine Eye Hooks

Code	Grade	Dia Ø mm	A mm	B mm	C mm	D mm	Weight Kg	UOM	Pack Qty
618304	316	4	42	20	6	5	0.01	Each	500
618305	316	5	50	26.5	7	7.8	0.02	Each	400
618306	316	6	60	30	7.5	7.8	0.03	Each	300
618308	316	8	80	40.5	10	10.8	0.06	Each	100
618310	316	10	100	50	12	14	0.15	Each	50
618312	316	12	140	64	21	20	0.24	Each	25

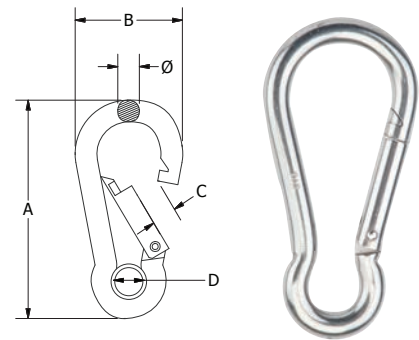
NOT TO BE USED FOR LIFTING



Beaver G316 Stainless Steel Carbine Hooks

Code	Grade	Dia mm	A mm	B mm	C mm	D mm	Weight Kg	UOM	Pack Qty
618204	316	4.5	42	20.5	6	6.5	0.01	Each	600
618205	316	5	50	26.5	7	8	0.018	Each	500
618206	316	6	60	30	7.5	8.5	0.028	Each	400
618208	316	8	80	40.5	10	12	0.055	Each	100
618210	316	10	100	50	12	15	0.145	Each	50
618211	316	11	120	58	16	19	0.18	Each	40

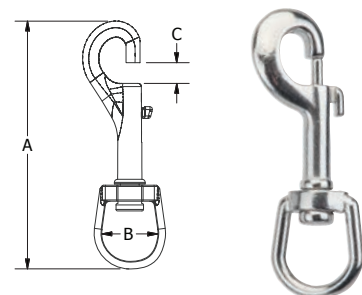
NOT TO BE USED FOR LIFTING



Beaver G316 Stainless Steel Swivel Eye Snap Hook

Code	Grade	Dia mm	A mm	B mm	C mm	Weight Kg	UOM	Pack Qty
616995	316	16	90	15.8	12	0.05	Each	140
616996	316	20	93	19	11.3	0.055	Each	100

NOT TO BE USED FOR LIFTING

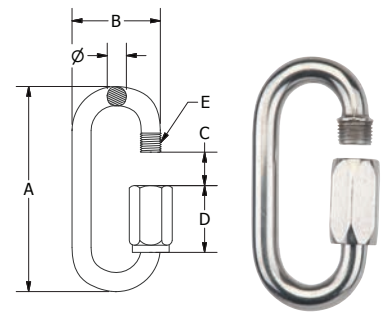


BEAVER STAINLESS STEEL FITTINGS (CONT'D)

Beaver G316 Stainless Steel Quick Links

Code	Grade	Dia mm	A mm	B mm	C mm	D mm	E mm	Weight Kg	UOM	Pack Qty
601604	316	4	43	18.5	7	14	4	0.011	Each	300
601605	316	5	52	22.5	8.5	18	5	0.02	Each	300
601606	316	6	61.5	27	9.5	21	6	0.03	Each	200
601608	316	8	77	35.5	11	25	8	0.07	Each	150
601610	316	10	89	42	13.5	28	10	0.14	Each	100

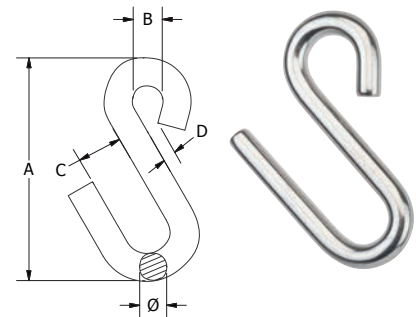
NOT TO BE USED FOR LIFTING



Beaver G304 Stainless Steel 'S' Hooks

Code	Grade	Dia mm	A mm	B mm	C mm	D mm	Weight Kg	UOM	Pack Qty
617006	304	6	64.5	11	12	5	0.032	Each	300
617008	304	8	75	16	17	4.5	0.06	Each	300
617010	304	9.5	95	20.8	21	8.8	0.13	Each	200

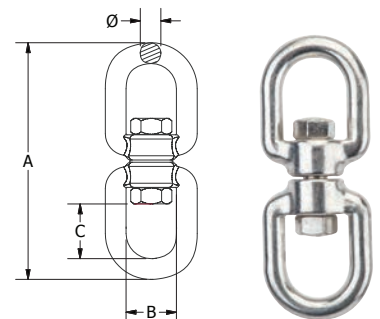
NOT TO BE USED FOR LIFTING



Beaver G316 Stainless Steel Eye & Eye Swivels

Code	Grade	Dia mm	A mm	B mm	C mm	Weight Kg	UOM	Pack Qty
619106	316	6	66	15	15.5	0.05	Each	100
619108	316	8	90	19	21.5	0.12	Each	100
619110	316	10	112	23.5	26.5	0.21	Each	100
619113	316	13	148	33	33	0.51	Each	50

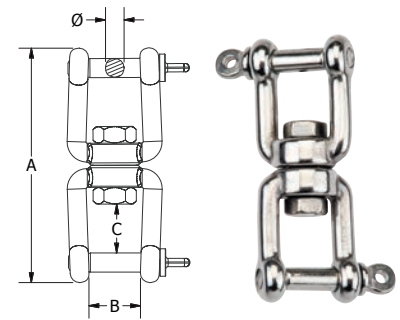
NOT TO BE USED FOR LIFTING



Beaver G316 Stainless Steel Jaw & Jaw Swivels

Code	Grade	Dia Ø mm	A mm	B mm	C mm	Weight Kg	UOM	Pack Qty
619306	316	6	64.4	12	12	0.07	Each	100
619308	316	8	87	16	15.5	0.14	Each	100
619310	316	10	111	18.5	20.5	0.258	Each	50
619313	316	13	143.5	26	25.5	0.62	Each	25

NOT TO BE USED FOR LIFTING





PRODUCT REFERENCE GUIDE

Part Number	Page Number	Part Number	Page Number	Part Number	Page Number	Part Number	Page Number
146102	13	611404	15	615305	16	616610	24
146102L	14	611406	15	615306	16	616612	24
146104	13	611408	15	615308	16	616705	24
146106	13	611410	15	615310	16	616707	24
146108	13	611412	15	615312	16	616710	24
146110	13	612202	20	615404	15	616812	24
146113	13	612203	20	615405	15	616816	24
146204	14	612204	20	615406	15	616825	24
146206	14	612205	20	615408	15	616995	25
146208	14	612206	20	615410	15	616996	25
147104	13	612208	20	615412	15	617006	26
147106	13	612210	20	615416	15	617008	26
147108	13	612212	20	615419	15	617010	26
147110	13	612302	21	615504	15	617402	12
600404	22	612303	21	615505	15	617403	12
600405	22	612304	21	615506	15	617404	12
600406	22	612305	21	615508	15	617405	12
600408	22	612306	21	615510	15	617406	12
600410	22	612308	21	615512	15	617407	12
600412	22	612310	21	615516	15	617408	12
601505	22	612312	21	616205	18	617409	12
601506	22	612316	21	616206	18	617410	12
601508	22	612406	16	616208	18	617411	12
601510	22	612408	16	616541	19	617412	12
601512	22	612410	16	616542	19	617413	12
601604	26	612412	16	616550	19	617414	12
601605	26	612416	16	616551	19	617416	12
601606	26	612506	17	616561	19	617418	12
601608	26	612508	17	616562	19	617420	12
601610	26	612510	17	616581	19	617704	19
601803	23	612512	17	616582	19	617705	19
601804	23	612516	17	616591	19	617706	19
601805	23	612640	17	616606	24	617708	19
601806	23	612860	17	616608	24	618006	19

STAINLESS STEEL PRODUCTS

SECTION

7

STAINLESS STEEL PRODUCTS

Part Number	Page Number	Part Number	Page Number	Part Number	Page Number	Part Number	Page Number
618010	18	619010	18	702130	10	600406H	22
618012	18	619012	18	702140	10	600408H	22
618060	18	619106	26	702150	10	600410H	22
618080	18	619108	26	702160	10	600412H	22
618204	25	619110	26	702180	10	612203L	21
618205	25	619113	26	703016	9	612204L	21
618206	25	619306	27	703020	9	612206L	21
618208	25	619308	27	703025	9	612214	20
618210	25	619310	27	703030	9	612216	20
618211	25	619313	27	703040	9	616541D	20
618304	25	701015	12	703050	9	616552D	20
618305	25	701020	12	703055	9	616562D	20
618306	25	701025	12	703060	9	616580D	20
618308	25	701030	12	703080	9	616562T	20
618310	25	701040	12	703100	9	616580T	20
618312	25	701050	12	703112	9	617402A	12
618451	17	701115	11	703116	9	617403A	12
618461	17	701120	11	704008	11	617404A	12
618462	17	701130	11	704009	11	617406A	12
618463	17	701140	11	704010	11	617402ANP	13
618464	17	701150	11	705030	11	617402NP	13
618481	17	701180	11	705040	11	617403NP	13
618482	17	702012	10	705050	11	617404NP	13
618483	17	702015	10	720016	9	617405NP	13
618493	17	702016	10	720025	9	617406NP	13
618496	17	702020	10	720030	9	617416NP	13
618512	24	702025	10	720040	9	619008A	18
618516	24	702030	10	720050	9	AWI10	6
618522	24	702040	10	720060	9	AWI13	6
618810	23	702050	10	720080	9	AWI16	6
618815	23	702060	10	618005	19	AWI18	6
619005	18	702116	10	618008	19	AWI22	6
619006	18	702120	10	600404H	22	AWI26	6
619008	18	702125	10	600405H	22	AWI32	6



PRODUCT REFERENCE GUIDE (CONT'D)

Part Number	Page Number
CWI10	7
CWI13	7
CWI16	7
CWI5	7
CWI7	7
HSWI5	8
HSWI7	8
HSWI10	8
HSWI13	8
HSWI16	8
SMSWI4/5	8
SMSWI6/7/8	8
SMSWI10	8
SMSWI13	8
SMSWI16	8
VWI5	7
VWI7	7
VWI10	7
VWI13	7
VWI16	7
WOX5	6
WOX7	6
WOX10	6
WOX13	6

STAINLESS STEEL PRODUCTS

SECTION

7

NOTES



**NATIONAL HEAD OFFICE
NEW SOUTH WALES**

Email: sydneysales@beaver.com.au
National Sales: 1300 783 606
Phone: (02) 8882 5700
Fax: (02) 8882 5899

55 Sarah Andrews Close
Erskine Park NSW 2759
PO Box 5001
St Clair NSW 2759

WESTERN AUSTRALIA

Email: perthsales@beaver.com.au
Ph: (02) 8882 5700

VICTORIA/ TASMANIA

Email: melbournesales@beaver.com.au
Ph: (02) 8882 5700

**SOUTH AUSTRALIA/
NORTHERN TERRITORY**

Email: adelaidesales@beaver.com.au
Ph: (08) 8244 3555
Fax: (08) 8244 3533

QUEENSLAND

Email: brisbanesales@beaver.com.au
Ph: (07) 3279 1100
Fax: (07) 3279 1381

www.beaver.com.au

Specifications and dimensions are subject to change without notice
© Copyright Beaver Brands 2015