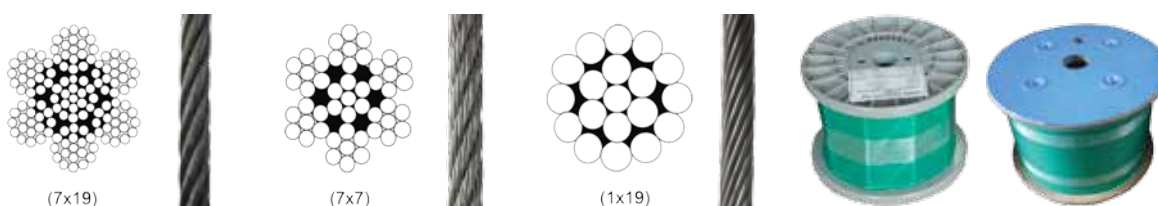




STAINLESS STEEL WIRE SS316

SOLD IN REELS ONLY

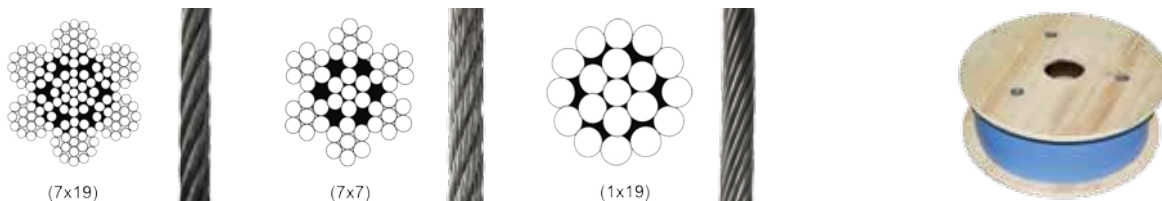
- Suitable for marine and premium industrial applications
- Manufactured in Korea from high quality POSCO stainless steel rods
- Highly polished finish
 - Multiple annealing
 - Ultrasonic bath process to thoroughly clean
 - Descaling process to decontaminate
- Detailed material- specific testing is conducted on all of our wire in our in-house-state-of-the-art equipment chemical metallurgical laboratory



Part No. 316	Size mm	M/Reel	Breaking Strength (min) Kgs
44619	M1.6 (1x19)	305	214
44620	M2.0 (1x19)	305	335
44621	M2.5 (1x19)	305	525
44493	M3.2 (1x19)	305	849
44653	M3.2 (1x19)	1000	849
44622	M4.0 (1x19)	305	1339
44623	M5.0 (1x19)	305	2098
44708	M6.0 (1x19)	305	2876
44624	M2.0 (7x19)	305	250
44625	M2.5 (7x19)	305	389
44494	M3.2 (7x19)	305	612
44626	M4.0 (7x19)	305	959
44627	M5.0 (7x19)	305	1489
44610	M6.0 (7x19)	305	2149
44628	M10.0 (7x19)	305	5966
44629	M1.6 (7x7)	305	168
44630	M2.0 (7x7)	305	260
44631	M2.5 (7x7)	305	399
44492	M3.2 (7x7)	305	665
44654	M3.2 (7x7)	1000	665
44632	M4.0 (7x7)	305	1039
44633	M5.0 (7x7)	305	1619
44709	M6.0 (7x7)	305	2328

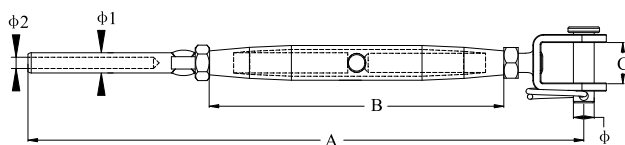
STAINLESS STEEL WIRE SS316 SOLD IN REELS ONLY

- Economical industrial applications
- Grade 304 is available upon request only



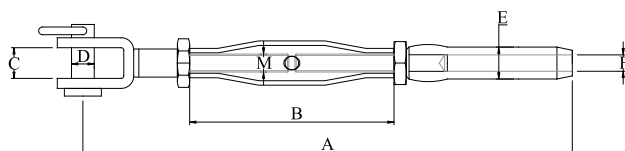
Part No. 316	Size mm	M/Reel	Breaking Strength (min) Kgs
44010	M1.6 (1x19)	305	215
44114	M1.6 (1x19)	1000	215
44011	M2.0 (1x19)	305	335
44012	M2.5 (1x19)	305	525
38113	M3.2 (1x19)	305	860
43656	M4.0 (1x19)	305	1345
44015	M5.0 (1x19)	305	2100
43729	M6.0 (1x19)	305	3025
44016	M8.0 (1x19)	305	5380
44017	M10.0 (1x19)	305	8030
44522	M2.0 (7x19)	305	210
44523	M2.5 (7x19)	305	330
31140	M3.2 (7x19)	305	540
43676	M4.0 (7x19)	305	850
44006	M5.0 (7x19)	305	1330
44007	M6.0 (7x19)	305	1910
44008	M8.0 (7x19)	305	3400
44009	M10.0 (7x19)	305	5310
44013	M1.6 (7x7)	305	145
43699	M2.0 (7x7)	305	230
44014	M2.5 (7x7)	305	350
37479	M3.2 (7x7)	305	580
43675	M4.0 (7x7)	305	920
44518	M5.0 (7x7)	305	1430
44519	M6.0 (7x7)	305	2070
44520	M8.0 (7x7)	305	3680
44521	M10.0 (7x7)	305	5750

RIGGING SCREW/ PIPE TURNBUCKLE (JAW AND SWAGE TERMINAL), SS304 OR SS316



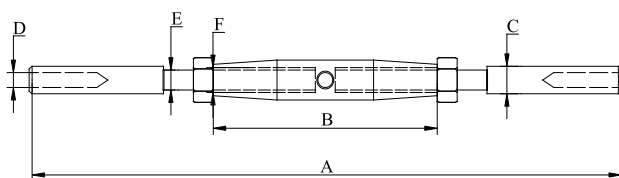
Part No. 304	Part No. 316	ϕ mm	ϕ1 mm	ϕ2 mm	A mm	B mm	C mm	ROPE mm	SWL kgs	BL kgs
41452	41459	5.00	5.50	2.80	155.00	80.00	10.00	2.50	150	600
41453	37681	5.00	6.20	3.50	155.00	82.00	6.80	3.20	200	800
37657	41460	6.00	6.35	3.30	176.00	92.00	10.00	3.20	250	1000
37658	41461	6.00	7.40	4.30	174.00	92.00	10.50	4.00	300	1200
37659	41462	8.00	7.50	4.30	190.00	112.00	11.00	4.00	350	1400
37660	41454	10.00	9.00	5.30	237.00	120.00	15.00	5.00	550	2200
37674	41455	12.00	12.58	6.30	288.00	150.00	17.00	6.00	1000	4000
41449	41456	14.00	14.20	7.30	331.00	170.00	15.00	7.00	1350	5400
41450	41457	16.00	16.00	8.30	372.00	190.00	20.00	8.00	1625	6500
41451	41458	20.00	20.00	10.30	459.00	220.00	30.00	10.00	2125	8500

MINI RIGGING SCREW/ PIPE TURNBUCKLE (JAW AND SWAGE TERMINAL), SS304 OR SS316



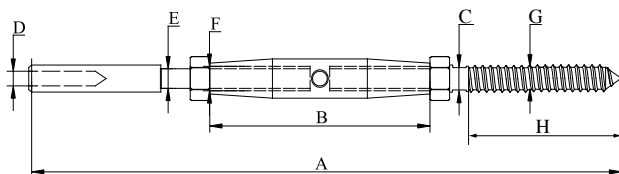
Part No. 304	Part No. 316	A mm	B mm	C mm	D mm	E mm	F mm	M mm	ROPE mm
41464	41468	110.50	45.00	7.00	4.90	6.30	3.60	M5	3.20
41465	41469	144.00	61.00	8.50	5.90	7.50	4.40	M6	4.00
41466	41470	155.00	60.00	11.50	7.90	9.00	5.30	M8	5.00
41463	41467	203.00	80.00	14.90	9.90	12.60	6.50	M10	6.00

RIGGING SCREW (SWAGE AND SWAGE), SS304 OR SS316

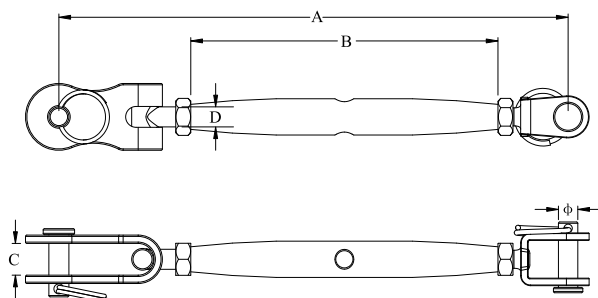


Part No. 304	Part No. 316	A mm	B mm	C mm	D mm	E mm	F mm	ROPE mm
41471	41472	188.00	80.80	6.30	3.60	5.00	M5	3.20

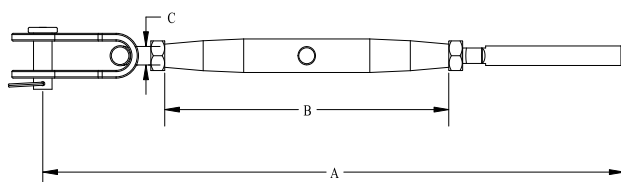
RIGGING SCREW (LAG AND SWAGE), SS304 OR SS316



Part No. 304	Part No. 316	A mm	B mm	C mm	D mm	E mm	F mm	G mm	H mm	WIRE mm
-	43615	187.00	82.00	4.00	3.50	4.9	M5	4.50	40.30	3.20

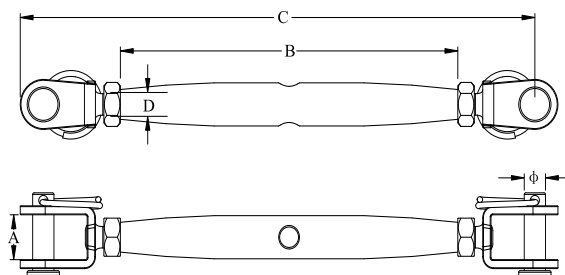
**RIGGING SCREW/ PIPE TURNBUCKLE (SWIVEL TOGGLE AND JAW),
 SS304 OR SS316**


Part No. 304	Part No. 316	ϕ mm	A mm	B mm	C mm	D mm	SWL kgs	BL kgs
41409	41413	6.00	166.00	92.00	8.50	M6	238	950
41410	41414	8.00	200.00	112.00	11.00	M8	450	1800
41411	41415	10.00	236.00	120.00	14.50	M10	625	2500
41412	41416	12.00	285.00	152.00	18.40	M12	925	3700

**RIGGING SCREW/ PIPE TURNBUCKLE (SWIVEL TOGGLE AND SWAGE TERM),
 SS304 OR SS316**


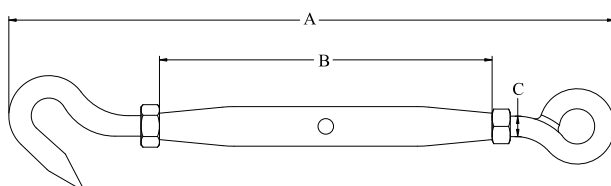
Part No. 304	Part No. 316	A mm	B mm	C mm	SWL kgs	BL kgs	ROPE mm
41419	41423	192.00	93.00	M6	238	950	3.20
41420	41424	230.00	111.00	M8	450	1800	4.00
41417	41421	263.00	120.00	M10	625	2500	5.00
41418	41422	330.00	150.00	M12	925	3700	6.00

RIGGING SCREW/ PIPE TURNBUCKLE (JAW AND JAW), SS304 OR SS316



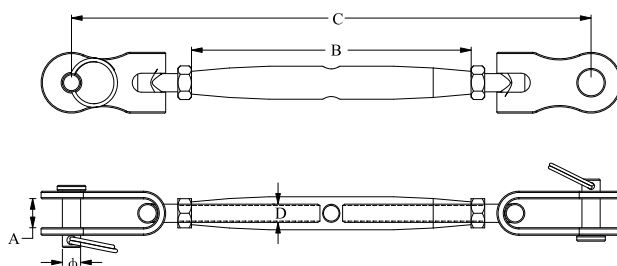
Part No. 304	Part No. 316	φ mm	A mm	B mm	C mm	D mm	SWL kgs	BL kgs
-	44448	4.90	7.50	50.00	115.00	M5	150	600
33476	41390	5.00	10.30	81.00	138.00	M5	189	750
33477	41391	6.00	10.30	92.00	153.00	M6	350	1400
33478	41392	8.00	11.20	112.00	188.00	M8	550	2200
<i>41380</i>	41385	10.00	15.00	121.00	212.00	M10	865	3450
<i>41381</i>	41386	12.00	17.50	150.00	266.00	M12	1250	5000
<i>41382</i>	41387	14.00	15.50	169.00	318.00	M14	1600	6400
<i>41383</i>	41388	16.00	22.00	190.00	355.00	M16	2000	8000
<i>41384</i>	41389	20.00	27.50	223.00	452.00	M20	2625	10500

RIGGING SCREW/ PIPE TURNBUCKLE (HOOK AND EYE), SS304 OR SS316



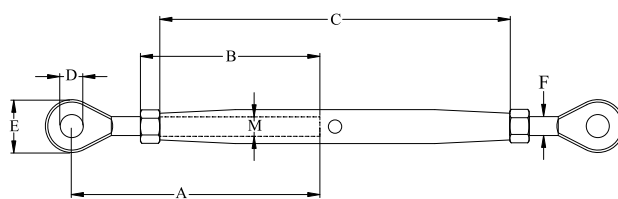
Part No. 304	Part No. 316	A mm	B mm	C mm	SWL kgs	BL kgs
<i>41398</i>	41406	134.00	80.00	M5	33	130
<i>41399</i>	41407	163.00	90.00	M6	88	350
<i>41400</i>	41408	191.00	105.00	M8	163	650
<i>41393</i>	<i>41401</i>	233.00	125.00	M10	200	800
<i>41394</i>	<i>41402</i>	267.00	150.00	M12	350	1400
<i>41396</i>	<i>41404</i>	344.00	190.00	M16	600	2400
<i>41397</i>	<i>41405</i>	444.00	210.00	M20	875	3500

RIGGING SCREW/ PIPE TURNBUCKLE (WIDE AND WIDE TOGGLE), SS304 OR SS316



Part No. 304	Part No. 316	φ mm	A mm	B mm	C mm	D mm	SWL kgs	BL kgs
41427	41431	6.00	11.60	92.00	185.00	M6	275	1100
41428	41432	8.00	13.00	112.00	213.00	M8	450	1800
41425	41429	10.00	17.50	121.00	255.00	M10	750	3000
41426	41430	12.00	24.50	150.00	306.00	M12	938	3750

RIGGING SCREW/ PIPE TURNBUCKLE (EYE AND EYE), SS304 OR SS316



Part No. 304	Part No. 316	A mm	B mm	C mm	D mm	E mm	F mm	M mm	SWL kgs	BL kgs
41438	41446	63.80	41.50	81.00	5.60	12.00	4.40	M5	188	750
41439	41447	61.50	48.00	92.00	6.50	13.50	4.00	M6	250	1000
41440	41448	80.00	63.60	111.60	8.60	16.60	7.00	M8	550	2200
41433	41441	88.00	69.00	119.00	10.80	20.80	8.80	M10	750	3000
41434	41442	109.50	88.00	150.00	13.00	25.60	10.70	M12	1250	5000
41435	41443	125.50	92.50	170.00	13.00	27.40	9.00	M14	1525	6100
41436	41444	136.00	110.00	190.00	14.50	30.50	14.30	M16	2000	8000
41437	41445	169.00	120.00	220.00	19.50	29.00	15.00	M20	2625	10500

CLEVIS PIN FOR FORK TERMINALS OR RIGGING SCREWS SS316



Part No. 316	TERMINAL/ RIGGING SCREW SIZE mm
44451	M5
44452	M6

RETAINING CLIP FOR FORK TERMINALS SS316



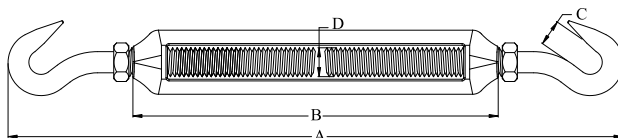
Part No. 316	TERMINAL/ RIGGING SCREW SIZE mm
44449	M5
44450	M6

NYLON GROMMETS (SPLIT TYPE)



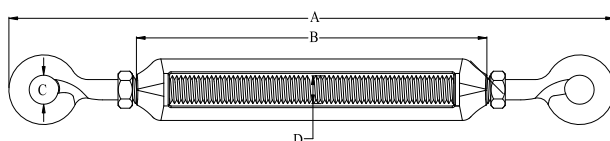
Part No.	SUIT WIRE ROPE mm	COLOUR	POST DRILL SIZE inch
44146	3.2-5.0	BLACK	11/32"
44457	3.2-5.0	GREY	11/32"

TURNBUCKLE, FRAME TYPE (HOOK AND HOOK), SS304 OR SS316



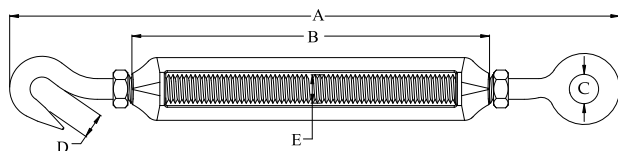
Part No. 304	Part No. 316	A mm	B mm	C mm	D mm	SWL kgs	BL kgs
41348	41357	116.00	61.50	9.00	M4	119	475
41349	37654	130.00	71.00	9.50	M5	170	680
41350	37655	167.00	90.50	8.50	M6	375	1500
41351	37656	214.00	122.00	10.30	M8	575	2300
41352	37723	230.00	135.00	12.00	M9	600	2400
41344	41353	265.00	151.50	12.50	M10	775	3100
41345	41354	320.00	201.00	15.00	M12	1100	4400
41346	41355	385.00	244.00	16.00	M16	2025	8100
41347	41356	485.00	295.00	20.00	M20	2750	11000

TURNBUCKLE, FRAME TYPE (EYE AND EYE), SS304 OR SS316



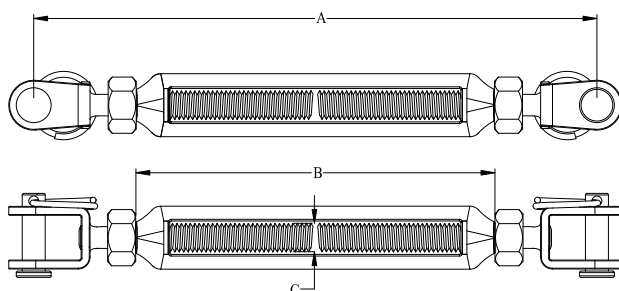
Part No. 304	Part No. 316	A mm	B mm	C mm	D mm	SWL kgs	BL kgs
41333	41341	103.00	61.50	8.00	M4	118	475
41338	19214	127.50	71.00	10.00	M5	170	680
41339	19095	160.00	90.50	12.00	M6	375	1500
41340	19053	208.00	122.00	14.00	M8	575	2300
41334	19215	225.00	135.00	16.00	M9	600	2400
-	44556	250.00	151.50	16.00	M10	775	3100
41335	30104	317.00	200.00	18.00	M12	1100	4400
41336	41342	400.00	244.00	26.00	M16	2025	8100
41337	41343	484.00	295.00	29.00	M20	2750	11000

TURNBUCKLE, FRAME TYPE (HOOK AND EYE), SS304 OR SS316



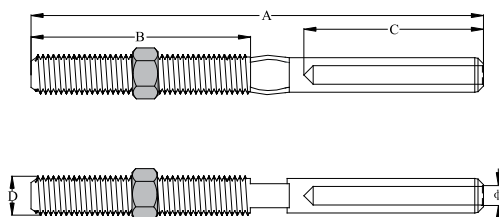
Part No. 304	Part No. 316	A mm	B mm	C mm	D mm	E mm	SWL kgs	BL kgs
41362	41368	110.00	61.50	8.00	9.00	M4	118.80	475
41363	19072	127.50	71.00	10.00	9.50	M5	170	680
41364	19216	163.00	90.50	12.00	9.00	M6	375	1500
41365	19073	212.00	122.00	14.00	10.30	M8	575	2300
41358	19217	226.00	135.00	16.00	12.00	M9	600	2400
-	44801	259.00	151.50	16.00	12.50	M10	775	3100
41359	31225	321.00	201.00	18.00	14.00	M12	1100	4400
41360	41366	397.00	244.00	26.00	16.00	M16	2025	8100
41361	41367	484.00	295.00	29.00	19.00	M20	2750	11000

TURNBUCKLE, FRAME TYPE (JAW AND JAW), SS304 OR SS316



Part No. 304	Part No. 316	A mm	B mm	C mm	SWL kgs	BL kgs
41374	30018	130.00	71.00	M5	188	750
41375	30019	152.00	90.50	M6	350	1400
41376	19168	192.00	121.50	M8	550	2200
41369	30049	243.00	151.50	M10	863	3450
41370	30050	316.00	200.00	M12	1250	5000
41371	41377	376.00	225.00	M14	1600	6400
41372	41378	412.00	244.00	M16	2000	8000
41373	41379	525.00	295.00	M20	2625	10500

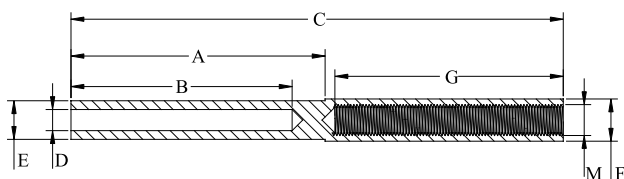
STUD TERMINAL, SS304 OR SS316



Part No. 304	Part No. 316	φ mm	A mm	B mm	C mm	D mm
40606	40621	2.70	86.00	40.00	35.00	M5
-	45148*	3.50	75.0	30.0	35.0	M5(LEFT)
-	45149*	3.50	75.0	30.0	35.0	M5
-	45150*	3.50	75.0	30.0	35.0	M6(LEFT)
-	45151*	3.50	75.0	30.0	35.0	M6
40619	38247	3.20	90.00	40.00	40.00	M5
-	44453	3.20	90.00	40.00	40.00	M5(LEFT)
40607	37661	3.30	97.00	48.00	38.00	M6
-	44454	3.20	97.00	48.00	40.00	M6(LEFT)
40620	37662	4.00	109.00	49.00	48.00	M6
-	44455	4.00	100.00	48.00	40.00	M6(LEFT)
40608	37663	4.30	115.00	54.00	45.00	M8
40609	37664	5.30	128.00	61.00	52.00	M10
42223	37665	6.30	130.00	63.00	52.00	M10
40610	40622	6.30	162.00	79.00	63.00	M12
40611	40623	7.30	178.00	90.00	70.00	M14
40612	40624	8.30	214.00	102.00	80.00	M16
40613	40625	10.50	215.00	105.00	90.00	M20
40614	40626	12.50	260.00	120.00	120.00	M20
40615	40627	14.80	300.00	140.00	140.00	M20
40616	40628	17.00	355.00	170.00	160.00	M24
40617	40629	21.00	425.00	180.00	200.00	M30

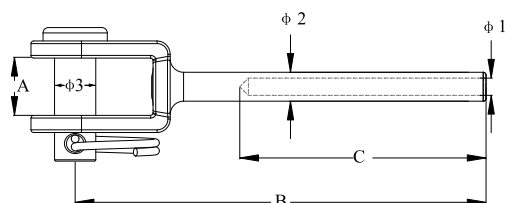
*Supplied with 8mm A/F nuts

STUD TERMINAL (ONE SIDE INTER THREAD), SS304 OR SS316



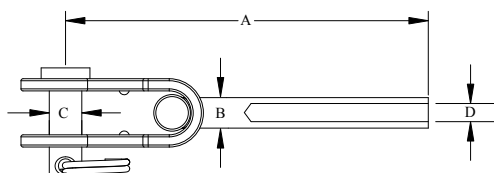
Part No. 304	Part No. 316	A mm	B mm	C mm	D mm	E mm	F mm	G mm	M mm
40630	40633	46.00	38.00	88.00	3.40	6.30	8.00	35.00	M5
40631	40634	50.00	45.00	95.00	4.40	7.50	8.00	35.00	M6
40632	37990	46.00	38.00	88.00	3.60	6.30	8.00	35.00	M5

FORK TERMINAL FORGED, SS304 OR SS316



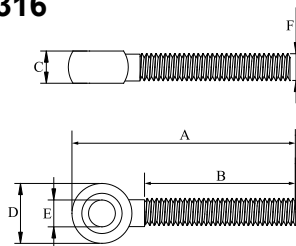
Part No. 304	Part No. 316	φ 1 mm	φ 2 mm	φ 3 mm	A mm	B mm	C mm	SWL kgs	BL kgs	ROPE mm
40667	40674	2.70	5.45	5.00	6.50	55.00	24.00	175	700	2.5
40668	37670	3.50	6.35	6.00	8.20	65.00	32.00	313	1250	3.2
-	44447	3.40	6.24	5.00	7.50	50.00	25.00	300	1200	3.2
-	42549	3.50	6.35	5.00	7.00	65.00	32.00	313	1250	3.2
40669	37671	4.30	7.50	8.00	9.20	73.00	45.00	450	1800	4.0
-	44555	4.40	7.50	6.00	8.20	73.00	45.00	450	1800	4.0
40670	37672	5.30	9.00	10.00	12.00	88.00	57.00	663	2650	5.0
40671	37673	6.40	12.50	12.00	14.00	106.00	63.00	1000	4000	6.0
40672	40675	8.80	16.00	13.00	17.50	155.00	95.00	1450	5800	8.0
40673	40676	10.80	18.00	16.00	21.00	177.00	110.00	1800	7200	10.0

TOGGLE TERMINAL, SS304 OR SS316



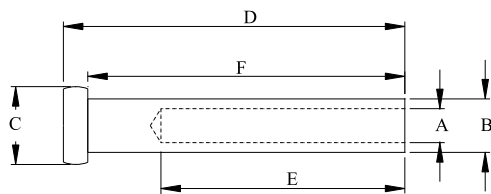
Part No. 304	Part No. 316	A mm	B mm	C mm	D mm	SWL kgs	BL kgs	ROPE mm
40694	40701	68.00	5.50	4.90	2.70	100	400	2.50
40695	40702	79.00	6.30	5.90	3.30	167	670	3.20
40696	40703	91.30	7.50	7.90	4.30	350	1400	4.00
40697	40704	107.80	9.00	9.80	5.30	425	1700	5.00
40698	40705	128.00	12.50	11.80	6.30	1000	4000	6.00
40699	40706	180.00	16.00	15.50	8.30	1750	7000	8.00
40693	40700	205.00	17.80	19.40	10.50	1875	7500	10.00

EYE BOLT/ SCREW, SS304 OR SS316



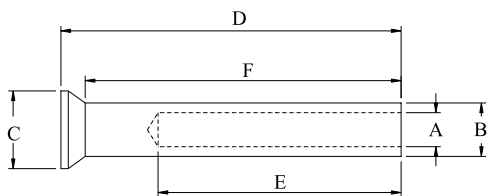
Part No. 304	Part No. 316	A mm	B mm	C mm	D mm	E mm	F mm
-	43413	28.00	10.00	7.00	14.00	6.20	M6
-	44496	26.00	10.00	6.70	12.70	5.90	M6
-	44497	43.00	26.00	6.70	12.70	6.00	M6

ROD TERMINAL (DOME), SS304 OR SS316



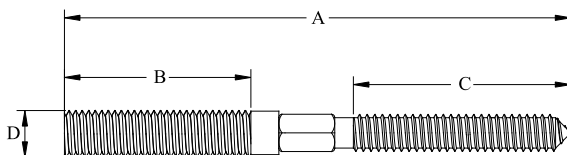
Part No. 304	Part No. 316	A mm	B mm	C mm	D mm	E mm	F mm
-	45160	3.30	6.30	10.00	35.00	25.00	32.00
40719	38000	3.30	5.50	8.00	35.00	25.00	32.00
40714	40721	4.30	6.30	10.00	35.00	25.00	32.00
40715	40722	5.30	7.50	11.50	41.00	30.00	38.00
40716	40723	6.30	9.08	14.00	52.00	40.00	48.50
40717	40724	8.40	12.50	18.00	66.00	50.00	62.00
40718	40725	10.50	16.08	22.00	77.00	60.00	73.00

COUNTER-SUNK ROD TERMINAL, SS304 OR SS316



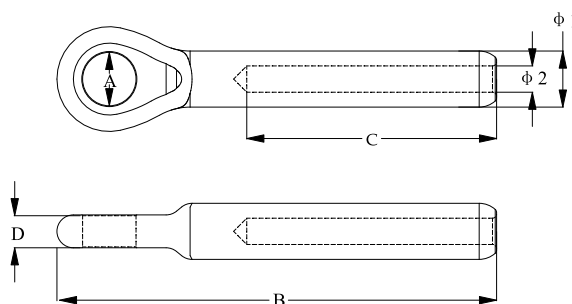
Part No. 304	Part No. 316	A mm	B mm	C mm	D mm	E mm	F mm
40726	40732	3.30	5.50	8.00	35.00	25.00	32.50
40727	40733	4.30	6.30	10.00	35.00	25.00	32.00
40728	40734	5.30	7.50	11.50	41.00	30.00	38.00
40729	40735	6.30	9.08	14.00	52.00	40.00	48.50
40730	40736	8.40	12.50	18.00	66.00	50.00	62.00
40731	40737	10.50	16.08	22.00	77.00	60.00	73.00

DOUBLE THREAD LAG SCREW, SS304 OR SS316



Part No. 304	Part No. 316	A mm	B mm	C mm	D mm
40651	40659	50.00	11.00	36.00	M8
40652	40660	60.00	20.00	37.00	M8
40653	40661	81.00	30.00	35.00	M8
40654	40662	98.80	40.00	47.00	M8
40655	40663	50.00	15.00	37.00	M10
40656	40664	60.00	20.00	37.00	M10
40657	40665	84.50	20.00	47.00	M10
40658	40666	102.00	30.00	55.00	M10

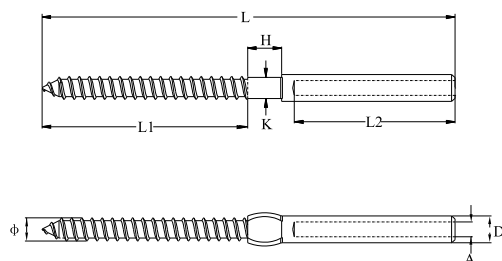
EYE TERMINAL FORGED, SS304 OR SS316



Part No. 304	Part No. 316	φ 1 mm	φ 2 mm	A mm	B mm	C mm	D mm	SWL kgs	BL kgs
40635	40645	5.50	2.70	5.50	57.50	35.00	2.60	213	850
40636	37666	6.30	3.30	6.50	62.30	38.70	3.80	250	1000
40637	37667	7.50	4.30	8.50	77.00	45.00	4.90	338	1350
40638	37668	9.00	5.30	10.60	89.00	53.80	5.80	625	2500
40639	37669	12.50	6.30	13.00	106.70	63.00	7.80	1125	4500
40641	40647	16.00	8.30	14.70	135.00	81.80	9.90	1675	6700
40642	40648	17.80	10.50	16.20	158.00	90.00	10.80	1950	7800
40643	40649	21.40	12.50	19.50	180.00	102.70	15.00	2250	9000
40644	40650	25.00	14.80	23.50	233.00	140.00	19.40	3000	12000

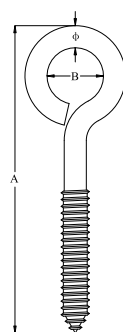
LAG SCREW/SWAGE TERMINAL, LEFT OR RIGHT THREAD, SS304 OR SS316

* Thread, right/left



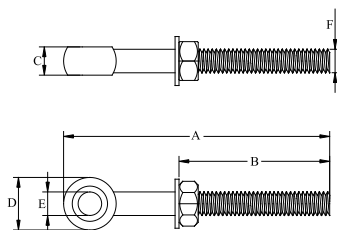
Part No. 304	Part No. 316	φ mm	A mm	D mm	L mm	L1 mm	L2 mm	K mm	H mm	T*	ROPE mm
40953	40963	5*2.20	2.70	5.50	86.00	40.00	35.00	4.00	8.00	R	2.50
40955	40965	6*2.60	3.30	6.30	97.00	48.00	38.00	5.00	8.00	R	3.20
40957	40967	8*3.50	4.30	7.50	115.00	54.00	45.00	6.00	10.00	R	4.00
40959	40969	10*4.50	5.30	9.00	128.00	61.00	52.00	7.00	10.00	R	5.00
40961	40971	12*5.00	6.30	12.50	162.00	79.00	63.00	10.00	10.00	R	6.00
40356	40357	6*2.60	3.30	6.30	97.00	48.00	38.00	5.00	8.00	L	3.20
40444	40449	8*3.50	4.30	7.50	115.00	54.00	45.00	6.00	10.00	L	4.00
-	44461	6*2.60	3.30	6.30	91.00	42.00	38.00	5.00	8.00	R	3.20
-	44462	6*2.60	3.30	6.30	91.00	42.00	38.00	5.00	8.00	L	3.20

LAG EYE SCREW, SS304 OR SS316



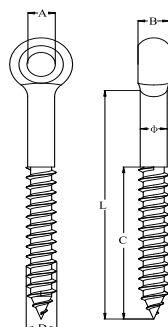
Part No. 304	Part No. 316	φ mm	A mm	B mm
40942	40947	5.76	100.00	14.00
40943	40948	7.80	109.00	20.00
40944	40949	9.25	124.00	30.00
40945	40950	5.76	62.00	16.00
40946	40951	7.80	84.50	20.00

FORGED EYE BOLT WITH WASHER & NUT, SS304 OR SS316



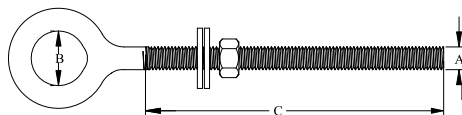
Part No. 304	Part No. 316	A mm	B mm	C mm	D mm	E mm	F mm
40940	40941	67.80	37.00	7.20	13.80	6.00	M6

LAG EYE SCREW FORGED, SS304 OR SS316



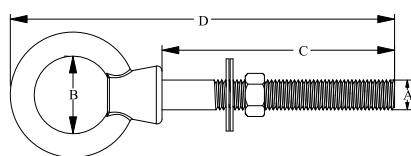
Part No. 304	Part No. 316	φ mm	A mm	B mm	C mm	D mm	L mm
-	44510	4.0	4.30	4.60	30.00	3.80	45.00
40914	40929	5.6~6	6.30	7.00	30.00	6.00	40.00
40915	40930	5.6~6	6.30	7.00	35.00	6.00	50.00
40916	40931	5.6~6	6.30	7.00	40.00	6.00	55.00
40917	30047	5.6~6	6.30	7.00	40.00	6.00	60.00
-	44928	6.00	6.50	6.00	44.00	6.00	55.00
40918	30048	7.6~8	8.40	9.00	40.00	8.00	60.00
40919	40932	7.6~8	8.40	9.00	50.00	8.00	75.00
40920	40933	7.6~8	8.40	9.00	55.00	8.00	80.00
40921	40934	7.6~8	8.40	9.00	65.00	8.00	100.00
40922	40935	9.6~10	10.20	11.00	50.00	10.00	75.00
40923	19503	9.6~10	10.20	11.00	55.00	10.00	80.00
40924	40936	9.6~10	10.20	11.00	60.00	10.00	85.00
40925	40937	9.6~10	10.20	11.00	65.00	10.00	100.00
40926	40938	9.6~10	10.20	11.00	80.00	10.00	120.00
40927	33703	11.6~12	12.10	13.00	65.00	12.00	100.00
40928	40939	11.6~12	12.10	13.00	80.00	12.00	120.00

EYE BOLT WITH DOUBLE WASHERS AND NUT, SS304 OR SS316



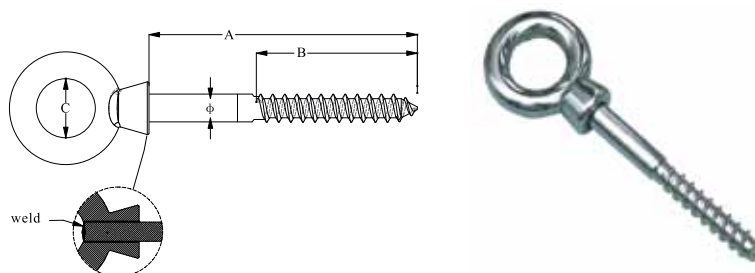
Part No. 304	Part No. 316	A mm	B mm	C mm	SWL kgs	BL kgs
19452	40741	M6	13.00	40.00	250	1000
19506	40742	M6	13.00	60.00	250	1000
19389	40743	M6	13.00	80.00	250	1000
19096	40744	M6	13.00	100.00	250	1000
19507	40745	M8	17.00	60.00	450	1800
19453	40746	M8	17.00	80.00	450	1800
19390	40747	M8	17.00	100.00	600	2400
19212	40748	M8	17.00	130.00	450	1800
40738	40749	M10	21.00	60.00	600	2400
19508	40750	M10	21.00	80.00	600	2400
19509	40751	M10	21.00	100.00	875	3500
19454	40752	M10	21.00	120.00	600	2400
19213	40753	M10	21.00	150.00	600	2400
40739	40754	M12	25.00	80.00	875	3500
19510	40755	M12	25.00	100.00	875	3500
40740	40756	M12	25.00	120.00	875	3500
19511	40757	M12	25.00	150.00	875	3500

LIFTING EYE BOLT WITH WASHER AND NUT, SS304 OR SS316



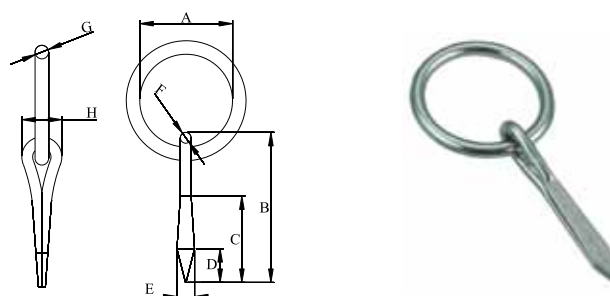
Part No. 304	Part No. 316	A mm	B mm	C mm	D mm	SWL kgs	BL kgs
40774	40784	M6	16.20	39.50	71.00	275	1100
40775	40785	M6	16.20	60.00	91.60	275	1100
40776	40786	M6	16.40	80.00	111.00	275	1100
40777	40787	M8	20.60	80.00	118.30	325	1300
40778	40788	M8	20.60	100.00	140.00	325	1300
40779	40789	M10	25.60	100.00	148.80	650	2600
40780	40790	M10	25.80	120.00	170.00	650	2600
40781	40791	M12	30.20	100.00	160.00	850	3400
40782	40792	M12	30.20	120.00	180.00	850	3400
40783	40793	M12	30.20	150.00	200.00	850	3400

EYE LAG SCREW, SS304 OR SS316



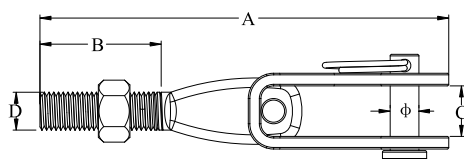
Part No. 304	Part No. 316	ϕ mm	A mm	B mm	C mm
40841	40857	6.00	40.00	24.00	14.00
40842	40858	6.00	60.00	36.00	14.00
40843	40859	6.00	80.00	48.00	14.00
40844	40860	6.00	100.00	60.00	14.00
40845	40861	8.00	62.00	36.00	18.40
40846	40862	8.00	81.00	48.00	18.40
40847	40863	8.00	102.00	60.00	18.00
40848	40864	10.00	63.00	36.00	22.20
40849	40865	10.00	83.00	48.00	23.00
40850	40866	10.00	98.00	60.00	22.00
40851	40867	10.00	120.00	70.00	22.00
40838	40854	12.00	80.00	48.00	27.00
40852	40868	12.00	106.00	60.00	27.00
40853	40869	12.00	122.50	72.00	27.30
40839	<i>40855</i>	12.00	140.00	84.00	27.00
40840	<i>40856</i>	12.00	160.00	96.00	27.00

RING NAIL, SS304 OR SS316



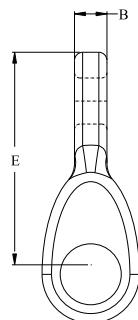
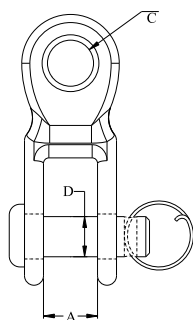
Part No. 304	Part No. 316	A mm	B mm	C mm	D mm	E mm	F mm	G mm	H mm
41142	41147	25.00	47.60	33.00	6.00	4.80	2.90	2.90	9.90
41143	41148	30.00	47.50	32.00	6.50	4.80	2.90	3.90	10.00
41144	41149	35.00	59.00	34.50	8.50	6.50	4.00	5.00	13.80
41145	41150	40.00	58.80	37.00	13.50	8.40	4.80	5.80	15.80
41146	<i>41151</i>	45.00	64.50	39.00	10.50	10.30	6.00	7.80	19.80

TOGGLE TERMINAL WITH NUT, SS304 OR SS316



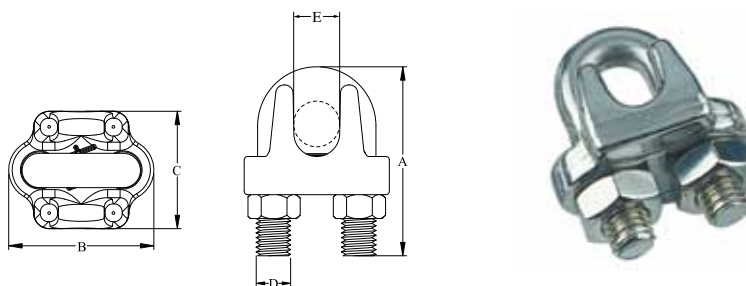
Part No. 304	Part No. 316	φ mm	A mm	B mm	C mm	D mm
41473	41475	9.70	113.00	25.00	17.00	M12
41474	41476	9.70	126.00	40.00	16.90	M12

SWAGE TOGGLE, SS304 OR SS316



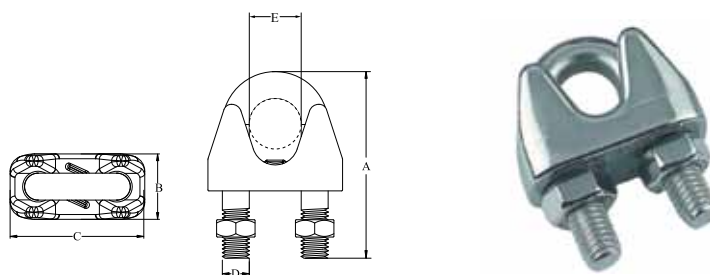
Part No. 304	Part No. 316	A mm	B mm	C mm	D mm	E mm	SWL kgs	BL kgs
41210	41217	5.60	3.80	5.50	4.90	35.00	250	1000
41211	41218	7.50	5.00	6.60	5.90	41.00	312	1250
41212	41219	9.90	6.00	9.00	7.90	49.70	425	1700
41213	41220	12.00	6.70	10.00	8.90	54.90	775	3100
41214	41221	13.00	9.00	13.10	11.90	77.70	1162	4650
41215	41222	14.70	10.00	15.00	14.00	91.30	1437	5700
41216	41223	16.60	12.20	16.60	15.70	115.90	2037	8100

WIRE ROPE CLIP, SS304 OR SS316

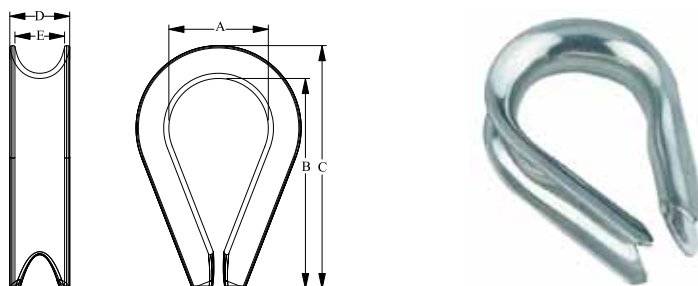


Part No. 304	Part No. 316	A mm	B mm	C mm	D mm	E mm
42271	19455	18.00	15.30	13.00	M3	2.0
42273	19456	24.50	15.80	14.50	M4	3.0
42274	19457	24.00	18.50	18.00	M4	4.0
42275	19458	29.00	23.00	19.60	M5	5.0
42276	19459	31.00	26.30	20.50	M6	6.0
42277	19460	41.00	33.50	27.00	M8	8.0
42265	19461	52.00	42.70	33.80	M10	10.0
42278	19462	61.00	50.00	37.80	M12	12.0
39986	39999	67.50	50.60	42.00	M12	14.0
39987	40000	76.00	60.00	47.00	M14	16.0
39988	40001	79.00	61.50	51.00	M14	19.0
39989	40002	103.00	72.80	61.00	M16	22.0
39990	40003	110.00	72.50	60.00	M16	25.0

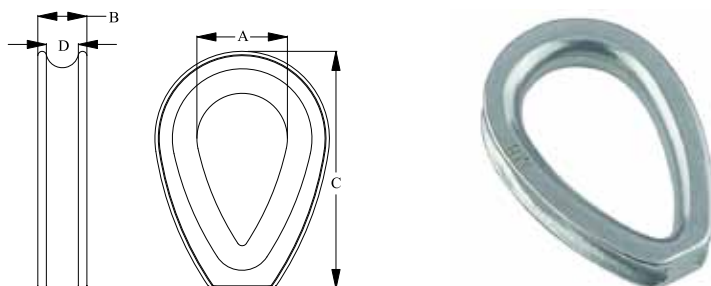
WIRE ROPE CLIP (LIGHT TYPE), SS304 OR SS316



Part No. 304	Part No. 316	A mm	B mm	C mm	D mm	E mm
40004	40015	21.30	10.00	17.00	M3	2.0
40005	40016	21.20	10.00	17.70	M3	3.0
40006	40017	24.00	11.00	21.30	M4	4.0
40007	40018	28.50	12.70	24.60	M6	5.0
40008	40019	31.80	15.80	27.50	M6	6.0
40009	40020	37.00	17.50	30.50	M6	8.0
40010	40021	45.80	19.50	37.00	M8	10.0
40011	40022	56.40	24.00	45.80	M10	13.0
40012	40023	66.80	25.00	49.80	M12	16.0
40013	40024	77.50	29.50	53.80	M12	19.0
40014	40025	86.50	31.30	63.00	M12	22.0

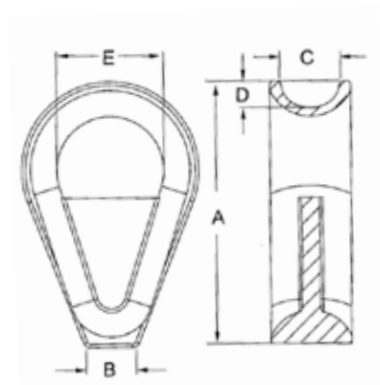
THIMBLE, SS304 OR SS316


Part No. 304	Part No. 316	A mm	B mm	C mm	D mm	E mm	WIRE mm
19172	40036	7.50	18.00	20.60	4.50	3.00	2.0
19173	40041	10.00	21.00	24.30	6.00	4.30	3.0
19174	40042	11.00	24.80	27.80	6.60	5.20	4.0
19175	40043	13.00	26.00	30.50	8.50	6.80	5.0
19176	40044	15.50	32.60	37.00	10.00	8.80	6.0
19177	40045	23.00	45.50	51.50	12.50	10.00	8.0
19178	40031	27.00	50.00	56.40	14.60	12.00	10.0
19179	40032	32.50	61.00	68.00	18.00	14.50	12.0
40026	40033	30.60	60.00	68.70	19.50	15.50	14.0
19180	40034	37.50	75.00	82.70	22.00	19.00	16.0
40027	40035	38.00	71.00	80.60	23.00	19.50	18.0
19181	40038	45.50	93.50	104.80	27.80	24.00	20.0
40029	40039	45.50	98.00	112.00	29.60	25.70	22.0
40030	40040	52.00	110.00	124.50	34.00	29.50	24.0

THIMBLE, CAST WITH CLOSED END, SS304 OR SS316


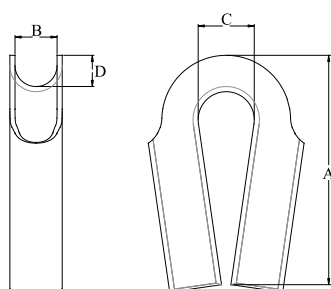
Part No. 304	Part No. 316	A mm	B mm	C mm	D mm	WIRE mm
40046	40053	10.50	5.70	25.00	3.00	2.0
40047	40054	14.00	7.00	32.00	3.60	3.0
40048	40055	17.00	9.00	42.50	8.00	6.0
40049	40056	24.50	12.80	58.00	8.80	8.0
40050	40057	28.30	13.60	67.50	10.30	10.0
40051	40058	36.50	16.30	85.50	12.00	12.0
40052	40059	46.80	22.30	109.50	15.00	14.0

THIMBLE SHEET CAST WITH CLOSED END, SS304 OR SS316

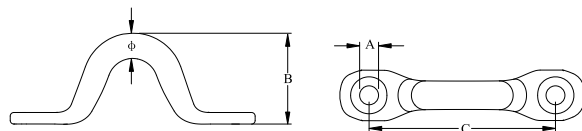


Part No. 304	Part No. 316	A mm	B mm	C mm	D mm	E mm
40072	40077	36.00	6.90	8.30	3.60	14.50
40073	40078	47.00	10.70	10.00	4.20	18.90
40074	40079	53.00	13.50	11.00	4.40	26.80
40075	40080	60.50	14.70	13.30	5.20	27.70
40076	40081	72.00	19.20	15.50	6.90	34.00

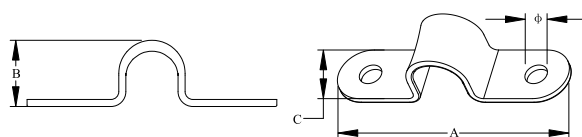
WIRE ROPE THIMBLE, SS304 OR SS316



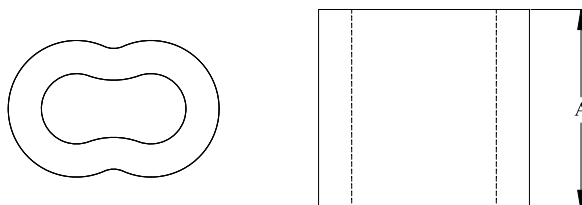
Part No. 304	Part No. 316	A mm	B mm	C mm	D mm
40082	40087	80.00	12.70	21.00	10.50
40083	40088	100.00	15.00	23.50	14.00
40084	40089	118.00	21.00	28.00	16.00
40085	40090	147.00	27.00	36.00	20.00
40086	40091	182.00	33.00	47.00	19.00

SADDLE/ EYE STRAP, SS304 OR SS316


Part No. 304	Part No. 316	φ mm	A mm	B mm	C mm
40347	40349	4.00	3.20	15.80	32.00
19210	40350	5.00	4.30	18.00	40.00
19211	40351	6.00	5.30	22.00	44.00
30240	40352	8.00	5.20	23.00	51.00
40348	40353	10.00	8.40	27.80	62.00

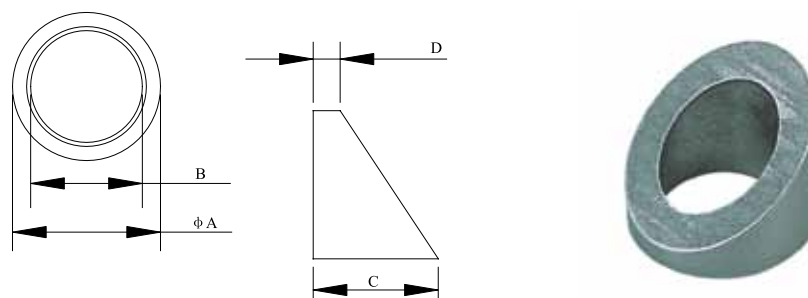
SADDLE/ FLAT EYE STRAP (TWO HOLE TYPE), SS304 OR SS316


Part No. 304	Part No. 316	φ mm	A mm	B mm	C mm
40358	40361	4.00	42.50	10.00	11.00
40359	40362	4.00	46.50	14.50	11.00
40360	40363	4.20	48.50	17.00	11.00

NICKEL PLATED HAND COPPER SWAGE


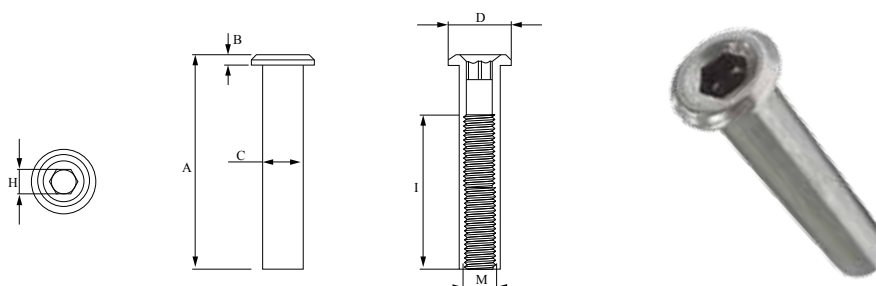
Part No.	WIRE SIZE mm	WIRE SIZE inch	A mm
44501	1.60	1/16"	10.50
44502	2.00	5/64"	10.50
44503	2.40	3/32"	11.00
42458	3.20	1/8"	14.00
44504	4.00	5/32"	17.00
42456	4.80	3/16"	21.00
44505	6.40	1/4"	25.00

CABLE PIVOT, SS304 OR SS316



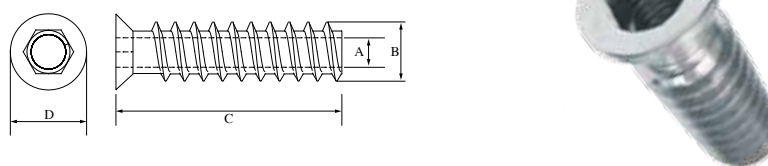
Part No. 304	Part No. 316	φ A mm	B mm	C mm	D mm
40574	40576	13.00	6.10	10.70	2.00
40575	40577	13.00	8.20	10.70	2.00

HEX SOCKET TENSIONER, SS304 OR SS316



Part No. 304	Part No. 316	A mm	B mm	C mm	D mm	H mm	I mm	M mm
40582	40584	42.50	2.00	8.00	12.50	5.00	30.00	M5
40583	40585	42.50	2.00	8.00	12.50	5.00	30.00	M6

COUNTER SUNK HEX SOCKET TIMBER INSERT, SS316



Part No. 316	A mm	B mm	C mm	D mm	THREAD
43996	M6	10.0	30.0	12.5	RIGHT
43997	M6	10.0	30.0	12.5	LEFT