



GLASS CLAMP INSTALLATION

Step 1



Drill the hole for the blind rivet nut.

Step 2



Insert the blind rivet nut with the blind rivet nut tool.

Step 3



The inserted blind rivet nut.

Step 4



Fasten half of the glass clamp to the blind rivet nut on the post with a hex socket screw.

Step 5



Install the rubber gaskets to each half of the glass clamp.

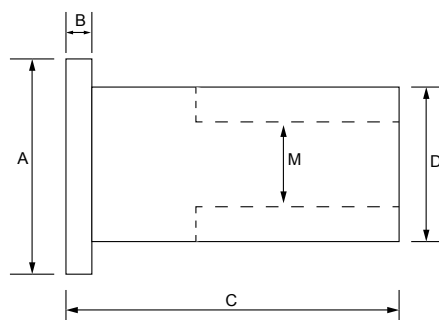
Step 6



Screw the other half of the glass clamp to hold the glass.

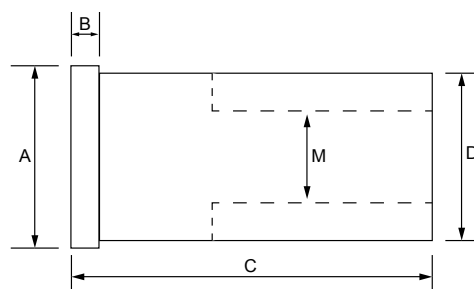


RIVET NUTS- LARGE FLANGE



Part No. 304	SIZE M mm	A mm	B mm	C mm	D mm
41795	M5	8.00	0.50	11.50	7.00
41797	M6	12.30	1.30	15.30	9.00
44914	M6 (LEFT HAND THREAD)	12.30	1.30	15.30	9.00
41798	M8	15.00	1.50	18.50	11.00

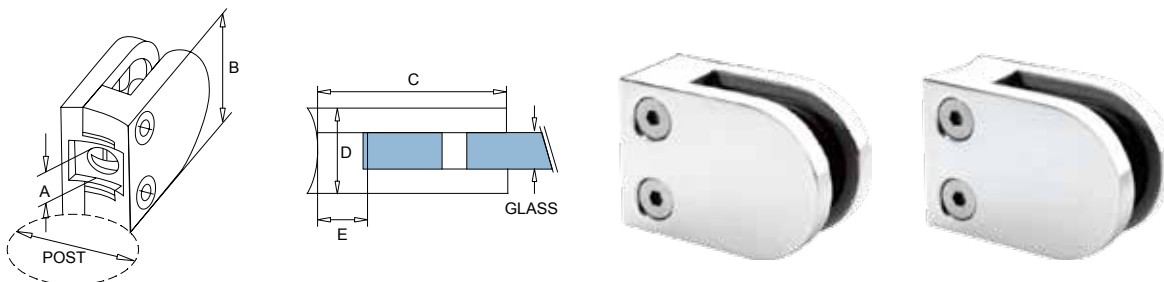
RIVET NUTS- SMALL FLANGE



Part No. 304	SIZE M mm	A mm	B mm	C mm	D mm
44615	M5	8.00	0.50	11.50	8.00
44609	M6	10.00	0.60	14.00	10.00
41801	M8	12.00	0.60	16.00	12.00
41802	M10	14.00	0.70	17.50	14.00

GLASS CLAMP- SMALL "D" TYPE AISI 316/A4

- Suit 6.0mm and 8.0mm glasses
- 4 pieces per packet
- Order gaskets seperately
- 1 pin supplied for each clamp
- Order fixing hardware (rivet nuts, cap screws, etc) seperately
- Supporting capacity approx. 60-80kgs per 2 vertically installed clamps



Part No. 316	GLASS mm	POST flat/round	A mm	B mm	C mm	D mm	E mm	FINISH
44937	6.0, 8.0	FLAT	9.0	40.0	50.0	23.0	16.0	SATIN
44938	6.0, 8.0	FLAT	9.0	40.0	50.0	23.0	16.0	MIRROR
44939	6.0, 8.0	2.0" ROUND	9.0	40.0	50.0	23.0	16.0	SATIN
44940	6.0, 8.0	2.0" ROUND	9.0	40.0	50.0	23.0	16.0	MIRROR

GLASS CLAMP- SMALL "D" TYPE RUBBER GASKET

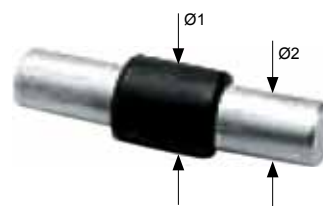
- Sold seperately from glass clamps
- Sold in pairs
- 4 pairs per bag



Part No.	SUIT GLASS mm
44941	6.0
44942	8.0

GLASS CLAMP- SMALL "D" TYPE CENTER PIN AISI 316

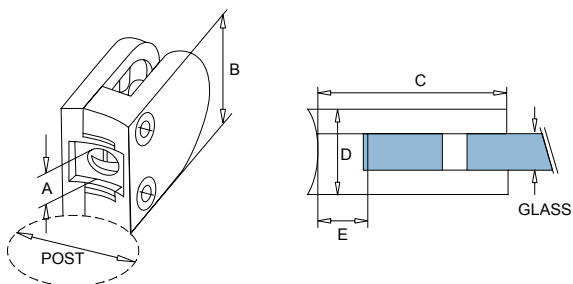
- Optional for heavy glass pannels with hole drilled
- Sold individually



Part No. 316	Ø1 mm	Ø2 mm	MATERIAL	SUIT FOR GLASS CLAMPS P/N
44943	8.0	6.0	AISI 316	44937, 44938, 44939, 44940

GLASS CLAMP- MEDIUM “D” TYPE AISI 316/A4

- Suit 6.0mm, 8.0mm and 10mm glasses
- 4 pieces per packet
- Order gaskets seperately
- 1 pin supplied for each clamp
- Order fixing hardware (rivet nuts, cap screws, etc) seperately
- Supporting capacity approx. 60-80kgs per 2 vertically installed clamps



Part No. 316	GLASS mm	POST flat/round	A mm	B mm	C mm	D mm	E mm	FINISH
44944	6.0, 8.0, 10.0	FLAT	9.0	45.0	63.0	26.0	16.0	SATIN
44945	6.0, 8.0, 10.0	FLAT	9.0	45.0	63.0	26.0	16.0	MIRROR
44946	6.0, 8.0, 10.0	2.0" ROUND	9.0	45.0	63.0	26.0	16.0	SATIN
44947	6.0, 8.0, 10.0	2.0" ROUND	9.0	45.0	63.0	26.0	16.0	MIRROR

GLASS CLAMP- MEDIUM “D” TYPE RUBBER GASKET

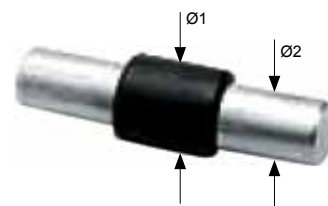
- Sold seperately from glass clamps
- Sold in pairs
- 4 pairs per bag



Part No.	SUIT GLASS mm
44948	6.0
44949	8.0
44950	10.0

GLASS CLAMP- MEDIUM “D” TYPE CENTER PIN AISI 316

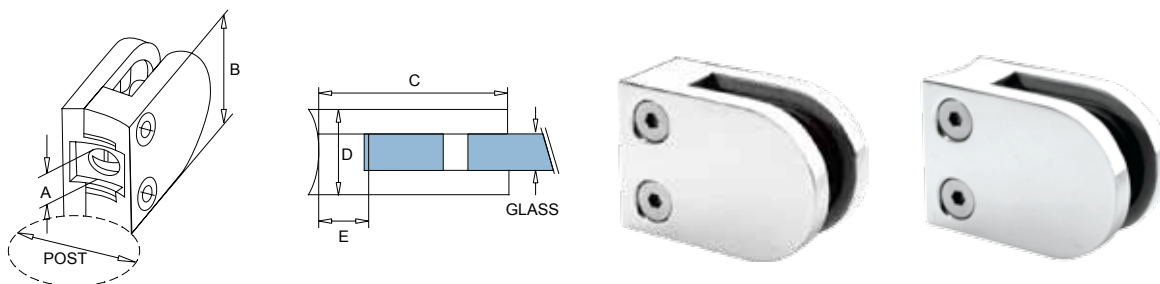
- Optional for heavy glass pannels with hole drilled
- Sold individually



Part No. 316	Ø1 mm	Ø2 mm	MATERIAL	SUIT FOR GLASS CLAMPS P/N
44951	8.0	6.0	AISI 316	44944, 44945, 44946, 44947

GLASS CLAMP- LARGE "D" TYPE AISI 316/A4

- Suit 8.0mm, 10mm and 12mm glasses
- 4 pieces per bag
- Order gaskets seperately
- 1 pin supplied for each clamp
- Order fixing hardware (rivet nuts, cap screws, etc) seperately
- Supporting capacity approx. 60-80kgs per 2 vertically installed clamps



Part No. 316	GLASS mm	POST flat/round	A mm	B mm	C mm	D mm	E mm	FINISH
44952	8.0, 10.0, 12.0	FLAT	9.0	55.0	60.0	32.0	16.0	SATIN
44953	8.0, 10.0, 12.0	FLAT	9.0	55.0	60.0	32.0	16.0	MIRROR
44954	8.0, 10.0, 12.0	2.0" ROUND	9.0	55.0	60.0	32.0	16.0	SATIN
44955	8.0, 10.0, 12.0	2.0" ROUND	9.0	55.0	60.0	32.0	16.0	MIRROR

GLASS CLAMP- LARGE "D" TYPE RUBBER GASKET

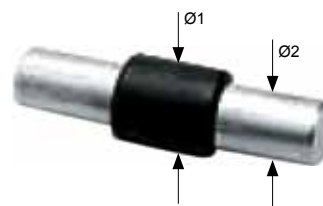
- Sold seperately from glass clamps
- Sold in pairs
- 4 pairs per bag



Part No.	SUIT GLASS mm
44956	8.0
44957	10.0
44958	12.0

GLASS CLAMP- LARGE "D" TYPE CENTER PIN AISI 316

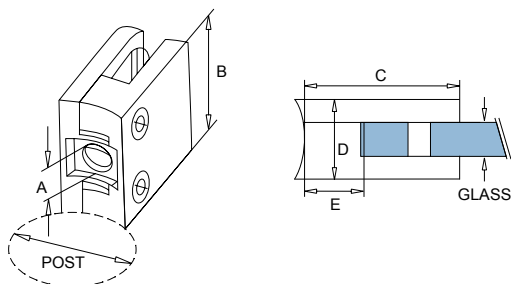
- Optional for heavy glass pannels with hole drilled
- Sold individually



Part No. 316	Ø1 mm	Ø2 mm	MATERIAL	SUIT FOR GLASS CLAMPS P/N
44959	8.0	6.0	AISI 316	44952, 44953, 44954, 44955

GLASS CLAMP- SMALL SQUARE TYPE AISI 316/A4

- Suit 6.0mm and 8.0mm glasses
- 4 pieces per packet
- Order gaskets seperately
- 1 pin supplied for each clamp
- Order fixing hardware (rivet nuts, cap screws, etc) seperately
- Supporting capacity approx. 60-80kgs per 2 vertically installed clamps



Part No. 316	GLASS mm	POST flat/round	A mm	B mm	C mm	D mm	E mm	FINISH
44960	6.0, 8.0	FLAT	9.0	45.0	45.0	22.0	16.0	SATIN
44961	6.0, 8.0	FLAT	9.0	45.0	45.0	22.0	16.0	MIRROR
44962	6.0, 8.0	2.0" ROUND	9.0	45.0	45.0	22.0	16.0	SATIN
44963	6.0, 8.0	2.0" ROUND	9.0	45.0	45.0	22.0	16.0	MIRROR

GLASS CLAMP- SMALL SQUARE TYPE RUBBER GASKET

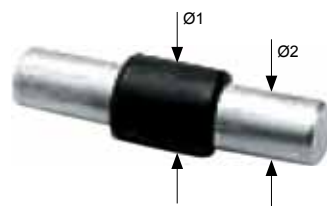
- Sold seperately from glass clamps
- Sold in pairs
- 4 pairs per bag



Part No.	SUIT GLASS mm
44964	6.0
44965	8.0

GLASS CLAMP- SMALL SQUARE TYPE CENTER PIN AISI 316

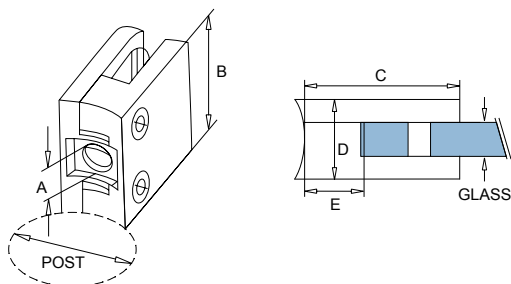
- Optional for heavy glass pannels with hole drilled
- Sold individually



Part No. 316	Ø1 mm	Ø2 mm	MATERIAL	SUIT FOR GLASS CLAMPS P/N
44966	8.0	6.0	AISI 316	44960, 44961, 44962, 44963

GLASS CLAMP- LARGE SQUARE TYPE AISI 316/A4

- Suit 8.0mm, 10.0mm and 12.0mm glasses
- 4 pieces per packet
- Order gaskets seperately
- 1 pin supplied for each clamp
- Order fixing hardware (rivet nuts, cap screws, etc) seperately
- Supporting capacity approx. 60-80kgs per 2 vertically installed clamps



Part No. 316	GLASS mm	POST flat/round	A mm	B mm	C mm	D mm	E mm	FINISH
44975	8.0, 10.0, 12.0	FLAT	9.0	55.0	55.0	32.0	16.0	SATIN
44976	8.0, 10.0, 12.0	FLAT	9.0	55.0	55.0	32.0	16.0	MIRROR
44977	8.0, 10.0, 12.0	2.0" ROUND	9.0	55.0	55.0	32.0	16.0	SATIN
44978	8.0, 10.0, 12.0	2.0" ROUND	9.0	55.0	55.0	32.0	16.0	MIRROR

GLASS CLAMP- LARGE SQUARE TYPE RUBBER GASKET

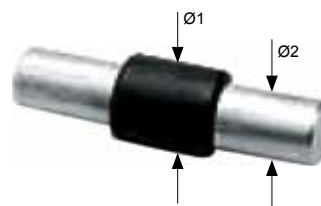
- Sold seperately from glass clamps
- Sold in pairs
- 4 pairs per bag



Part No.	SUIT GLASS mm
44979	8.0
44980	10.0
44981	12.0

GLASS CLAMP- LARGE SQUARE TYPE CENTER PIN AISI 316

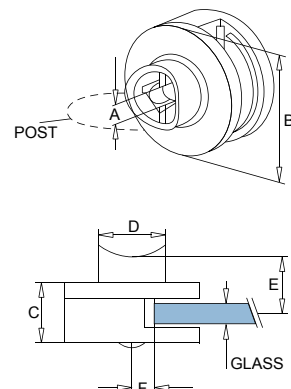
- Optional for heavy glass pannels with hole drilled
- Sold individually



Part No. 316	Ø1 mm	Ø2 mm	MATERIAL	SUIT FOR GLASS CLAMPS P/N
44982	8.0	6.0	AISI 316	44975, 44976, 44977, 44978

GLASS CLAMP- ROUND 1-SIDE TYPE AISI 316/A4

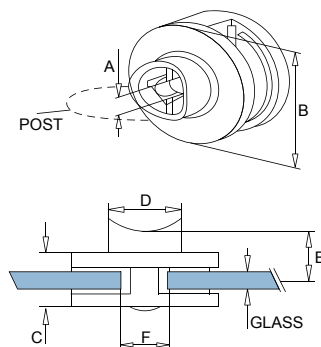
- Suit 8.0mm, 10.0mm 12.0mm glasses
- 4 pieces per packet
- Order gaskets seperately
- Order fixing hardware (rivet nuts, cap screws, etc) seperately
- Supporting capacity approx. 50-60kgs per 2 vertically installed clamps



Part No. 316	GLASS mm	POST flat/round	A mm	B mm	C mm	D mm	E mm	F mm	FINISH
44987	8.0, 10.0, 12.0	FLAT	8.5	60.0	28.0	30.0	26.0	10.0	SATIN
44988	8.0, 10.0, 12.0	FLAT	8.5	60.0	28.0	30.0	26.0	10.0	MIRROR
44989	8.0, 10.0, 12.0	2.0" ROUND	8.5	60.0	28.0	30.0	26.0	10.0	SATIN
44990	8.0, 10.0, 12.0	2.0" ROUND	8.5	60.0	28.0	30.0	26.0	10.0	MIRROR

GLASS CLAMP- ROUND 2-SIDE TYPE AISI 316/A4

- Suit 8.0mm, 10.0mm 12.0mm glasses
- 4 pieces per packet
- Order gaskets seperately
- Order fixing hardware (rivet nuts, cap screws, etc) seperately
- Supporting capacity approx. 50-60kgs per 2 vertically installed clamps



Part No. 316	GLASS mm	POST flat/round	A mm	B mm	C mm	D mm	E mm	F mm	FINISH
44991	8.0, 10.0, 12.0	FLAT	8.5	60.0	28.0	30.0	26.0	20.0	SATIN
44992	8.0, 10.0, 12.0	FLAT	8.5	60.0	28.0	30.0	26.0	20.0	MIRROR
44993	8.0, 10.0, 12.0	2.0" ROUND	8.5	60.0	28.0	30.0	26.0	20.0	SATIN
44994	8.0, 10.0, 12.0	2.0" ROUND	8.5	60.0	28.0	30.0	26.0	20.0	MIRROR

GLASS CLAMP- ROUND TYPE RUBBER GASKET

- Sold seperately from glass clamps
- Sold in pairs
- 4 pairs per bag



Part No.	SUIT GLASS mm
44995	8.0
44996	10.0
44997	12.0

GLASS CLAMP- DROP SHAPE AISI 316/A4

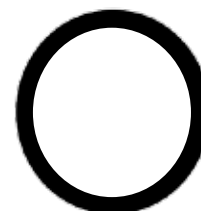
- Suit 8.0mm and 10.0mm glasses
- 4 pieces per packet
- Order gaskets seperately
- Order fixing hardware (rivet nuts, cap screws, etc) seperately



Part No. 316	GLASS mm	POST flat/round	A mm	B mm	C mm	FINISH
44998	8.0, 10.0	FLAT	53.0	45.0	36.80	SATIN
44999	8.0, 10.0	FLAT	53.0	45.0	36.80	MIRROR
45000	8.0, 10.0	2.0" ROUND	53.0	45.0	36.80	SATIN
45001	8.0, 10.0	2.0" ROUND	53.0	45.0	36.80	MIRROR

GLASS CLAMP- DROP SHAPE RUBBER GASKET

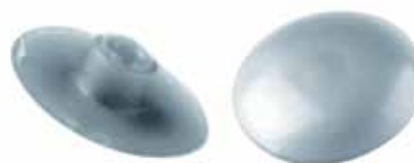
- Sold seperately from glass clamps
- Sold in pairs
- 4 pairs per bag



Part No.	SUIT GLASS mm
45035	8.0
45036	10.0

GLASS CLAMP SCREW, NYLON COVER CAP

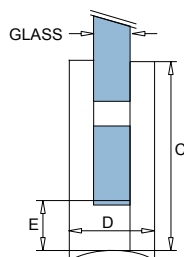
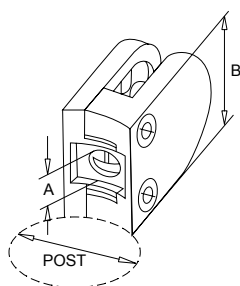
- Sold seperately from glass clamps
- 4 pairs per bag
- Suit all glass clamps screws except drop shape



Part no.	COLOUR
45125	GREY

GLASS CLAMP- MEDIUM “D” TYPE LEFT HAND SUPPORT AISI 316/A4

- Suit 6.0mm, 8.0mm and 10mm glasses
- 4 pieces per packet
- Order gaskets seperately
- 1 pin supplied for each clamp
- Order fixing hardware (rivet nuts, cap screws, etc) seperately
- Left hand corner supporting and slip preventing



Part No. 316	GLASS mm	POST flat/round	A mm	B mm	C mm	D mm	E mm	FINISH
45010	6.0, 8.0, 10.0	FLAT	9.0	45.0	63.0	26.0	16.0	SATIN
45011	6.0, 8.0, 10.0	FLAT	9.0	45.0	63.0	26.0	16.0	MIRROR
45012	6.0, 8.0, 10.0	2.0" ROUND	9.0	45.0	63.0	26.0	16.0	SATIN
45013	6.0, 8.0, 10.0	2.0" ROUND	9.0	45.0	63.0	26.0	16.0	MIRROR

GLASS CLAMP- MEDIUM “D” TYPE LEFT HAND SUPPORT RUBBER GASKET

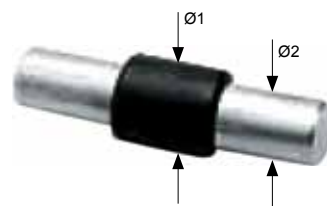
- Sold seperately from glass clamps
- Sold in pairs
- 4 pairs per bag



Part No.	SUIT GLASS mm
45014	6.0
45015	8.0
45016	10.0

GLASS CLAMP- MEDIUM “D” TYPE LEFT HAND SUPPORT CENTER PIN AISI 316

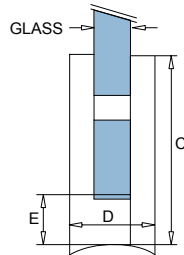
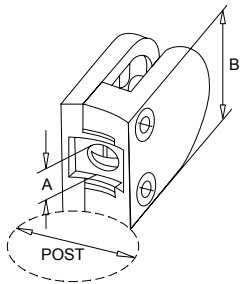
- Optional for heavy glass pannels with hole drilled
- Sold individually



Part No. 316	Ø1 mm	Ø2 mm	MATERIAL	SUIT FOR GLASS CLAMPS P/N
45017	8.0	6.0	AISI 316	45010, 45011, 45012, 45013

GLASS CLAMP- MEDIUM "D" TYPE RIGHT HAND SUPPORT AISI 316/A4

- Suit 6.0mm, 8.0mm and 10mm glasses
- 4 pieces per packet
- Order gaskets seperately
- 1 pin supplied for each clamp
- Order fixing hardware (rivet nuts, cap screws, etc) seperately
- Right hand corner supporting and slip preventing



Part No. 316	GLASS mm	POST flat/round	A mm	B mm	C mm	D mm	E mm	FINISH
45002	6.0, 8.0, 10.0	FLAT	9.0	45.0	63.0	26.0	16.0	SATIN
45003	6.0, 8.0, 10.0	FLAT	9.0	45.0	63.0	26.0	16.0	MIRROR
45004	6.0, 8.0, 10.0	2.0" ROUND	9.0	45.0	63.0	26.0	16.0	SATIN
45005	6.0, 8.0, 10.0	2.0" ROUND	9.0	45.0	63.0	26.0	16.0	MIRROR

GLASS CLAMP- MEDIUM "D" TYPE RIGHT HAND SUPPORT RUBBER GASKET

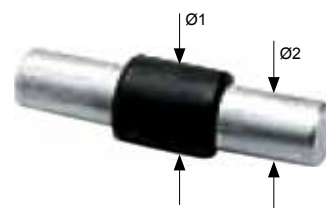
- Sold seperately from glass clamps
- Sold in pairs
- 4 pairs per bag



Part No.	SUIT GLASS mm
45006	6.0
45007	8.0
45008	10.0

GLASS CLAMP- MEDIUM "D" TYPE RIGHT HAND SUPPORT CENTER PIN AISI 316

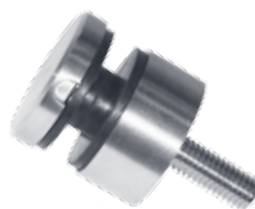
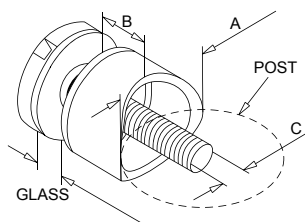
- Optional for heavy glass pannels with hole drilled
- Sold individually



Part No. 316	Ø1 mm	Ø2 mm	MATERIAL	SUIT FOR GLASS CLAMPS P/N
45009	8.0	6.0	AISI 316	45002, 45003, 45004, 44005

GLASS HOLDER- 30MM OUTER DIAMETER AISI 316/A4

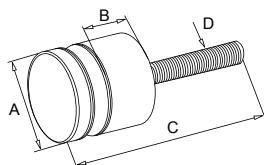
- Suit 6.0mm-16.0mm glasses
- Stud M8x40mm
- 2 pieces per packet
- Gasket included
- Order fixing hardware seperately
- Glass drilling (14mm) is required



Part No. 316	GLASS mm	POST flat/round	A mm	B mm	C mm	FINISH
44983	6.0-16.0	FLAT	30.0	15.0	M8x40	SATIN
44984	6.0-16.0	FLAT	30.0	15.0	M8x40	MIRROR
44985	6.0-16.0	2.0" ROUND	30.0	15.0	M8x40	SATIN
44986	6.0-16.0	2.0" ROUND	30.0	15.0	M8x40	MIRROR

GLASS STANDOFF- AISI 316/A4

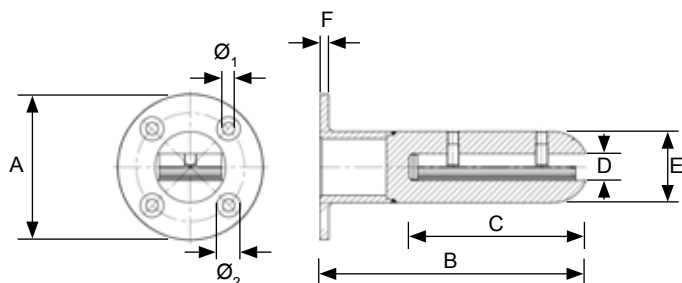
- Suit 10.0mm and 12.0mm glasses
- Gasket included
- Order fixing hardware seperately
- Glass drilling is required



Part No. 316	GLASS mm	A mm	B mm	C mm	D mm	FINISH
45038	10.0, 12.0	38.0	25.0	172.0	M10	SATIN
45039	10.0, 12.0	38.0	25.0	172.0	M10	MIRROR
45040	10.0, 12.0	38.0	50.0	172.0	M10	SATIN
45041	10.0, 12.0	38.0	50.0	172.0	M10	MIRROR
45042	10.0, 12.0	50.0	25.0	194.0	M10	SATIN
45043	10.0, 12.0	50.0	25.0	194.0	M10	MIRROR
45044	10.0, 12.0	50.0	50.0	194.0	M10	SATIN
45045	10.0, 12.0	50.0	50.0	194.0	M10	MIRROR
45046	10.0, 12.0	32.0	30.0	137.0	M10	SATIN
45047	10.0, 12.0	32.0	30.0	137.0	M10	MIRROR
45048	10.0, 12.0	38.0	30.0	137.0	M10	SATIN
45049	10.0, 12.0	38.0	30.0	137.0	M10	MIRROR
45050	10.0, 12.0	50.0	30.0	137.0	M12	SATIN
45051	10.0, 12.0	50.0	30.0	137.0	M12	MIRROR

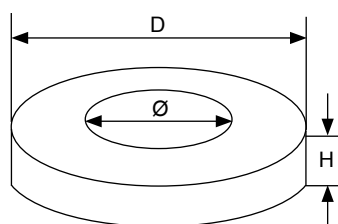
ROUND SPIGOT WITH BASE PLATE, SS316

- Suit 10mm and 12mm glasses
- Sold individually
- Rubber and Stainless Steel gaskets supplied



Part No. 316	A mm	B mm	C mm	D mm	E mm	F mm	Ø ₁ mm	Ø ₂ mm	FINISH
45019	98.0	180.0	120.0	18.0	48.0	6.0	8.5	15.0	SATIN
45020	98.0	180.0	120.0	18.0	48.0	6.0	8.5	15.0	MIRROR

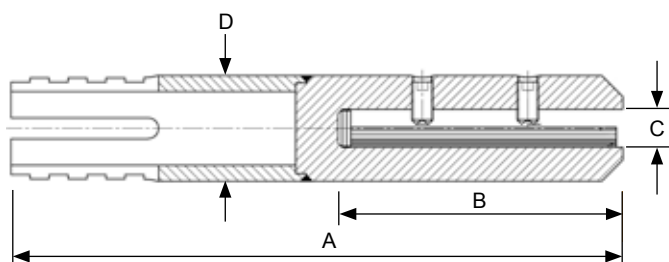
COVER PLATE (FOR SPIGOT SKU 45019, 45020), SS316



Part No. 316	Ø mm	D mm	H mm	FINISH
45021	48.3	105.0	18.0	SATIN
45022	48.3	105.0	18.0	MIRROR

ROUND SPIGOT CORE DRILL, SS316

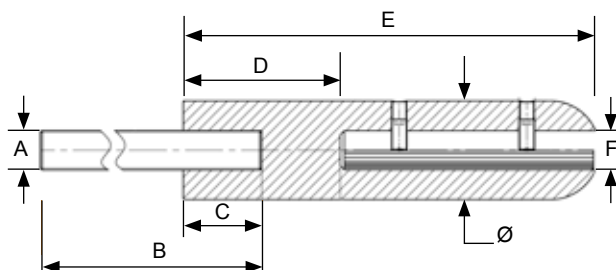
- Suit 10mm and 12mm glasses
- Sold individually
- Rubber and Stainless Steel gaskets supplied



Part No. 316	A mm	B mm	C mm	D mm	FINISH
45023	290.0	135.0	18.0	50.0	SATIN
45024	290.0	135.0	18.0	50.0	MIRROR

ROUND SPIGOT, SS316

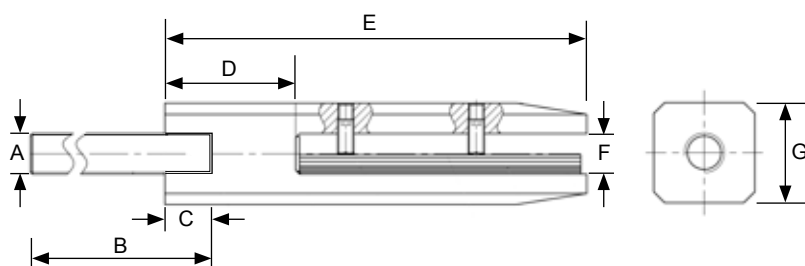
- Suit 10mm and 12mm glasses
- Sold individually
- Rubber and Stainless Steel gaskets and anchoring rod supplied



Part No. 316	Ø mm	A mm	B mm	C mm	D mm	E mm	F mm	FINISH
45025	50.0	M20	200.0	40.0	80.0	210.0	19.0	SATIN
45026	50.0	M20	200.0	40.0	80.0	210.0	19.0	MIRROR

SQUARE SPIGOT, SS316

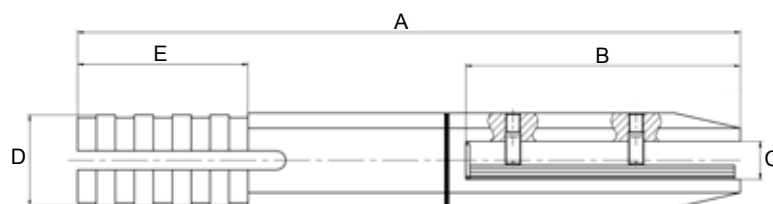
- Suit 10mm and 12mm glasses
- Sold individually
- Rubber and Stainless Steel gaskets and anchoring rod supplied



Part No. 316	A mm	B mm	C mm	D mm	E mm	F mm	G mm	FINISH
45027	M20	200.0	50.0	65.0	210.0	20.0	50.4	SATIN
45028	M20	200.0	50.0	65.0	210.0	20.0	50.4	MIRROR

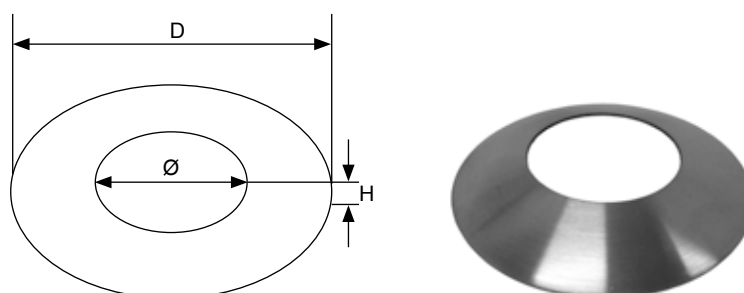
SQUARE SPIGOT CORE DRILL, SS316

- Suit 10mm and 12mm glasses
- Sold individually
- Rubber and Stainless Steel gaskets supplied



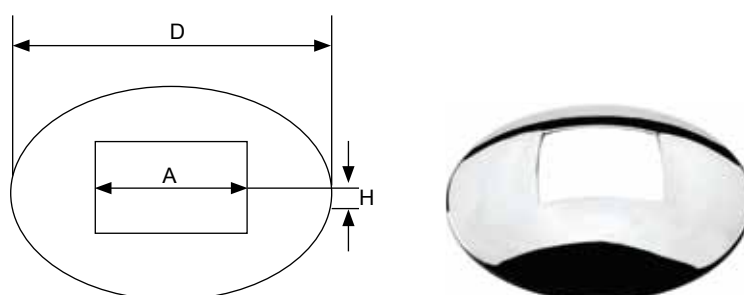
Part No. 316	A mm	B mm	C mm	D mm	E mm	FINISH
45200	350.0	145.0	20.0	50.0	90.0	SATIN
45201	350.0	145.0	20.0	50.0	90.0	MIRROR

COVER (FOR ROUND TUBE/SPIGOT), SS316



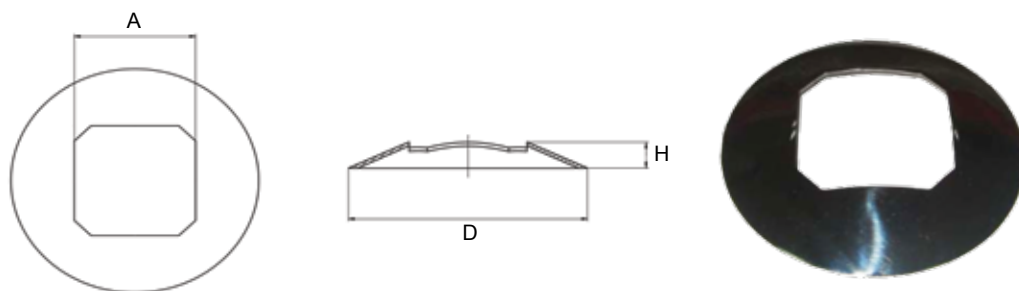
Part No. 316	Ø mm	D mm	H mm	FINISH
45031	50.80	102.0	11.0	SATIN
45032	50.80	102.0	11.0	MIRROR

COVER (FOR SQUARE TUBE/SPIGOT), SS316



Part No. 316	A mm	D mm	H mm	FINISH
45033	50.8	101.0	9.0	SATIN
45034	50.8	101.0	9.0	MIRROR

COVER (FOR SQUARE SPIGOT CORE DRILL), SS316



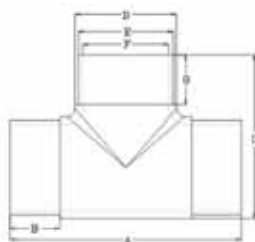
Part No. 316	A mm	D mm	H mm	FINISH
45202	51.5	102.5	11.0	SATIN
45203	51.5	102.5	11.0	MIRROR

FLUSH JOINER 90° RADIUS 2", SS304 OR SS316

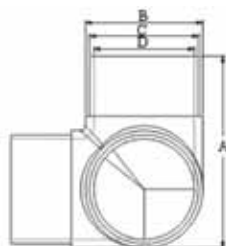

Part No. 304	Part No. 316	A mm	B mm	C mm	D mm	E mm
40510	40511	92.00	25.70	51.00	47.20	43.50

FLUSH JOINER 90° 2", SS304 OR SS316


Part No. 304	Part No. 316	A mm	B mm	C mm	D mm	E mm
40506	40507	83.00	26.30	50.80	47.20	43.30

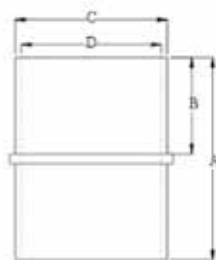
FLUSH JOINER TEE 2", SS304 OR SS316


Part No. 304	Part No. 316	A mm	B mm	C mm	D mm	E mm	F mm	G mm
40518	40519	115.80	24.60	81.70	51.00	47.20	43.50	24.70

FLUSH JOINER 90° THREE WAY CORNER 2", SS304 OR SS316


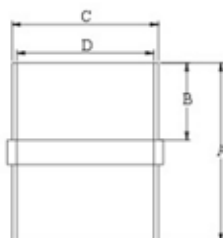
Part No. 304	Part No. 316	A mm	B mm	C mm	D mm
40520	40521	83.50	51.40	47.20	44.00

FLUSH JOINER IN-LINE1 2", SS304 OR SS316



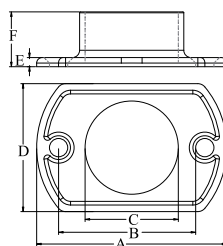
Part No. 304	Part No. 316	A mm	B mm	C mm	D mm
40522	40523	63.00	30.00	47.00	43.50

FLUSH JOINER IN-LINE2 2", SS304 OR SS316



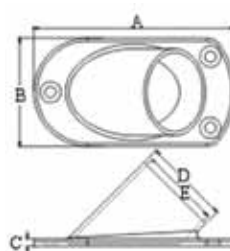
Part No. 304	Part No. 316	A mm	B mm	C mm	D mm
40524	40525	58.00	25.00	47.40	44.00

OBLONG FLANGE/BASE PLATE, SS304 OR SS316

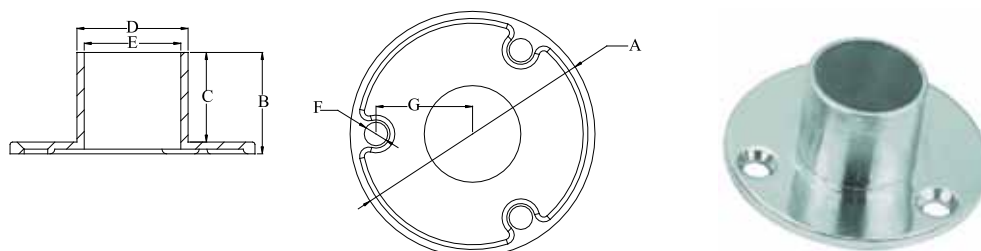


Part No. 304	Part No. 316	A mm	B mm	C mm	D mm	E mm	F mm
40526	40527	105.00	80.00	51.80	70.00	4.80	30.00

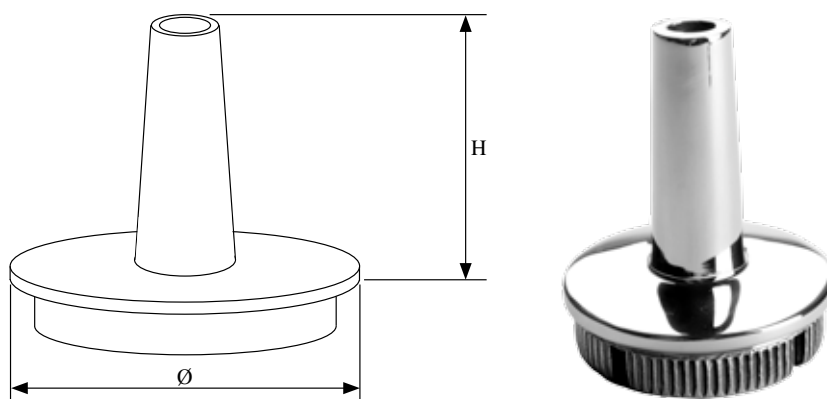
WALL STOP FLANGE 135° 2", SS304 OR SS316



Part No. 304	Part No. 316	A mm	B mm	C mm	D mm	E mm
40528	40529	130.00	70.30	5.00	56.50	51.00

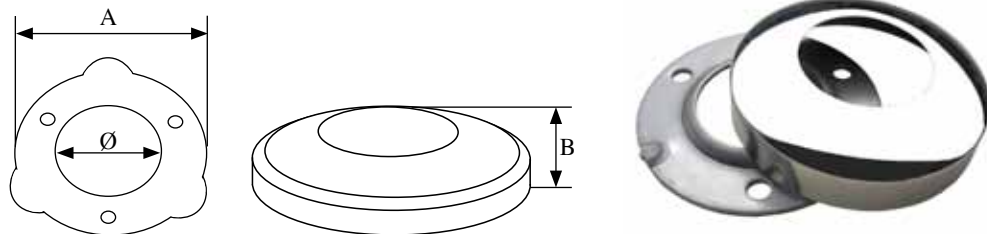
ROUND BASE PLATE/FLANGE IN 2", SS304 OR SS316


Part No. 304	Part No. 316	A mm	B mm	C mm	D mm	E mm	F mm	G mm
40530	40531	104.00	43.00	38.00	46.50	41.70	10.00	41.00

RAIL COVERTER, SS316


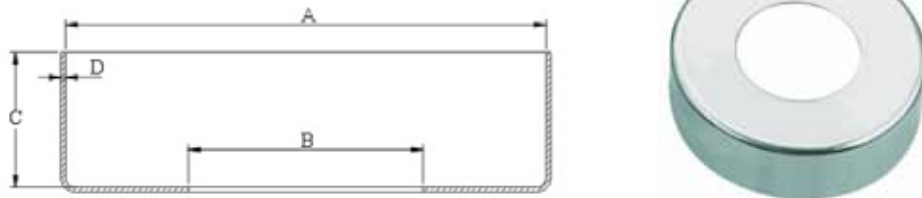
Part No. 316	Ø mm	H mm	TUBE THICKNESS mm	FINISH
44919	50.8	51.0	1.5	MIRROR

ROUND 2" BASE PLATE WITH COVER, SS316



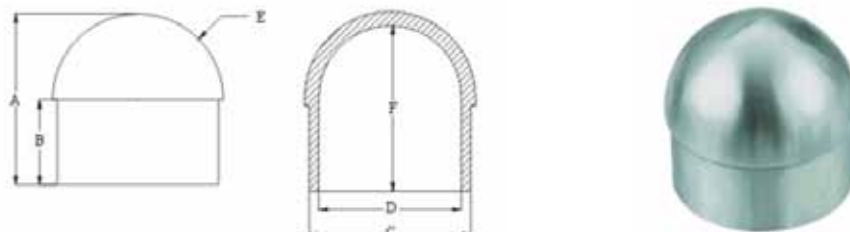
Part No. 316	Ø mm	A mm	B mm	FINISH
44927	50.8	100.0	26.0	MIRROR

ROUND COVER 2", SS304 OR SS316



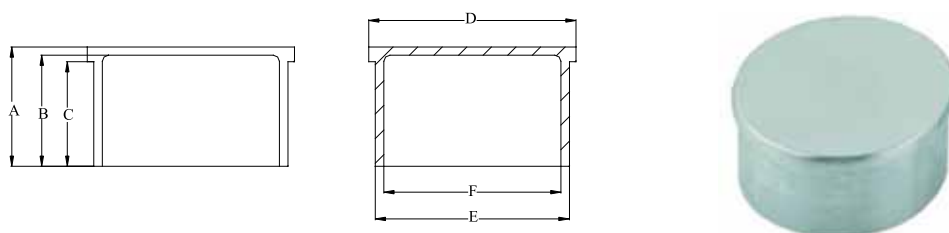
Part No. 304	Part No. 316	A mm	B mm	C mm	D mm
40532	40533	104.0	50.90	29.00	1.00

END CAP DOME 2", SS304 OR SS316



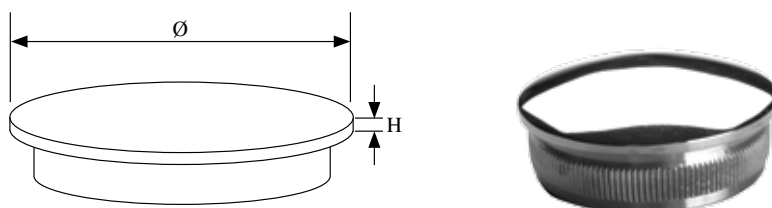
Part No. 304	Part No. 316	A mm	B mm	C mm	D mm	E mm	F mm
40538	40539	57.20	25.40	47.00	44.00	25.70	47.00

END CAP FLAT 2", SS304 OR SS316



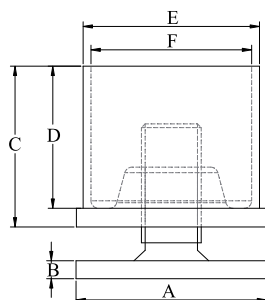
Part No. 304	Part No. 316	A mm	B mm	C mm	D mm	E mm	F mm
40806	40823	29.20	27.20	25.60	50.80	47.20	43.60

END CAP SELF GRIP 2", SS316



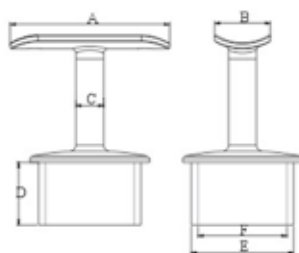
Part No. 316	Ø mm	H mm	TUBE THICKNESS mm	FINISH
44918	50.8	2.5	1.5	MIRROR

BASE INTERNAL ROUND TUBE 2", SS304 OR SS316

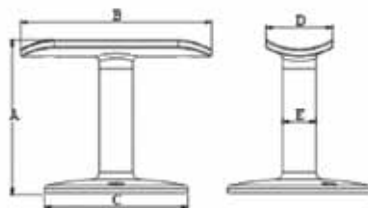


Part No. 304	Part No. 316	A mm	B mm	C mm	D mm	E mm	F mm
40544	40545	50.40	5.00	43.30	38.60	47.20	43.50

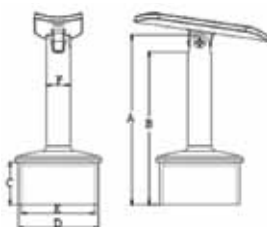
RAIL BRACKET 2" TUBE TOP MOUNT SQUARE, SS304 OR SS316



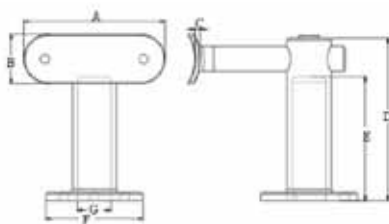
Part No. 304	Part No. 316	A mm	B mm	C mm	D mm	E mm	F mm
40546	40547	80.40	28.10	19.00	24.80	47.20	43.50

RAIL BRACKET 2" TOP MOUNT, SS304 OR SS316


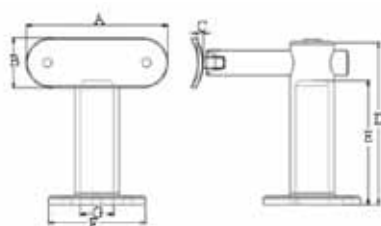
Part No. 304	Part No. 316	A mm	B mm	C mm	D mm	E mm
40550	40551	64.00	80.00	59.60	28.00	14.00

RAIL BRACKET 2" TUBE TOP MOUNT ADJUSTABLE, SS304 OR SS316


Part No. 304	Part No. 316	A mm	B mm	C mm	D mm	E mm	F mm
40552	40553	104.00	90.40	25.70	47.20	43.70	18.80

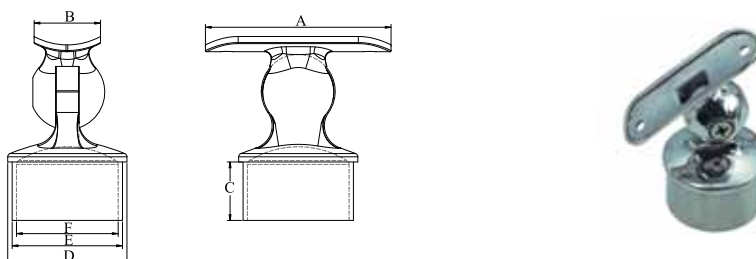
RAIL BRACKET 2" WALL MOUNT SQUARE, SS304 OR SS316


Part No. 304	Part No. 316	A mm	B mm	C mm	D mm	E mm	F mm	G mm
40554	40555	80.50	28.30	3.00	93.30	70.60	54.90	19.00

RAIL BRACKET 2" WALL MOUNT ADJUSTABLE, SS304 OR SS316


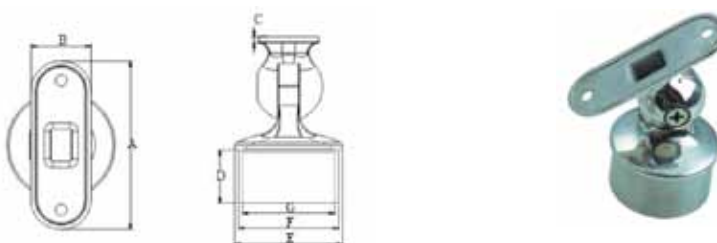
Part No. 304	Part No. 316	A mm	B mm	C mm	D mm	E mm	F mm	G mm
40556	40557	80.50	28.30	3.00	93.30	70.60	54.90	19.00

RAIL SUPPORT INTERNAL ADJUSTABLE CURVED 2", SS304 OR SS316



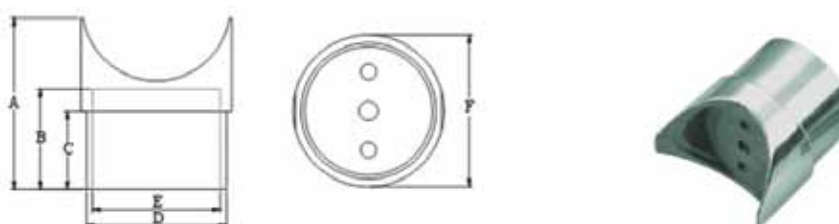
Part No. 304	Part No. 316	A mm	B mm	C mm	D mm	E mm	F mm
40560	40561	79.80	29.50	25.60	50.50	47.20	43.80

RAIL SUPPORT INTERNAL ADJUSTABLE FLAT 2", SS304 OR SS316



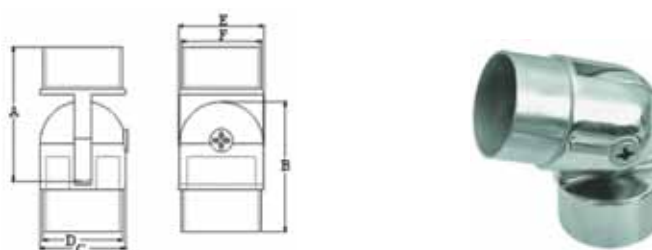
Part No. 304	Part No. 316	A mm	B mm	C mm	D mm	E mm	F mm	G mm
40562	40563	81.00	30.00	2.50	25.30	50.40	47.20	44.00

JOINER FITTED 2", SS304 OR SS316



Part No. 304	Part No. 316	A mm	B mm	C mm	D mm	E mm	F mm
40558	40559	57.60	33.00	26.40	47.20	43.00	51.20

JOINER ADJUSTABLE 2", SS304 OR SS316



Part No. 304	Part No. 316	A mm	B mm	C mm	D mm	E mm	F mm
40564	40565	79.00	76.50	51.00	47.00	50.00	47.00